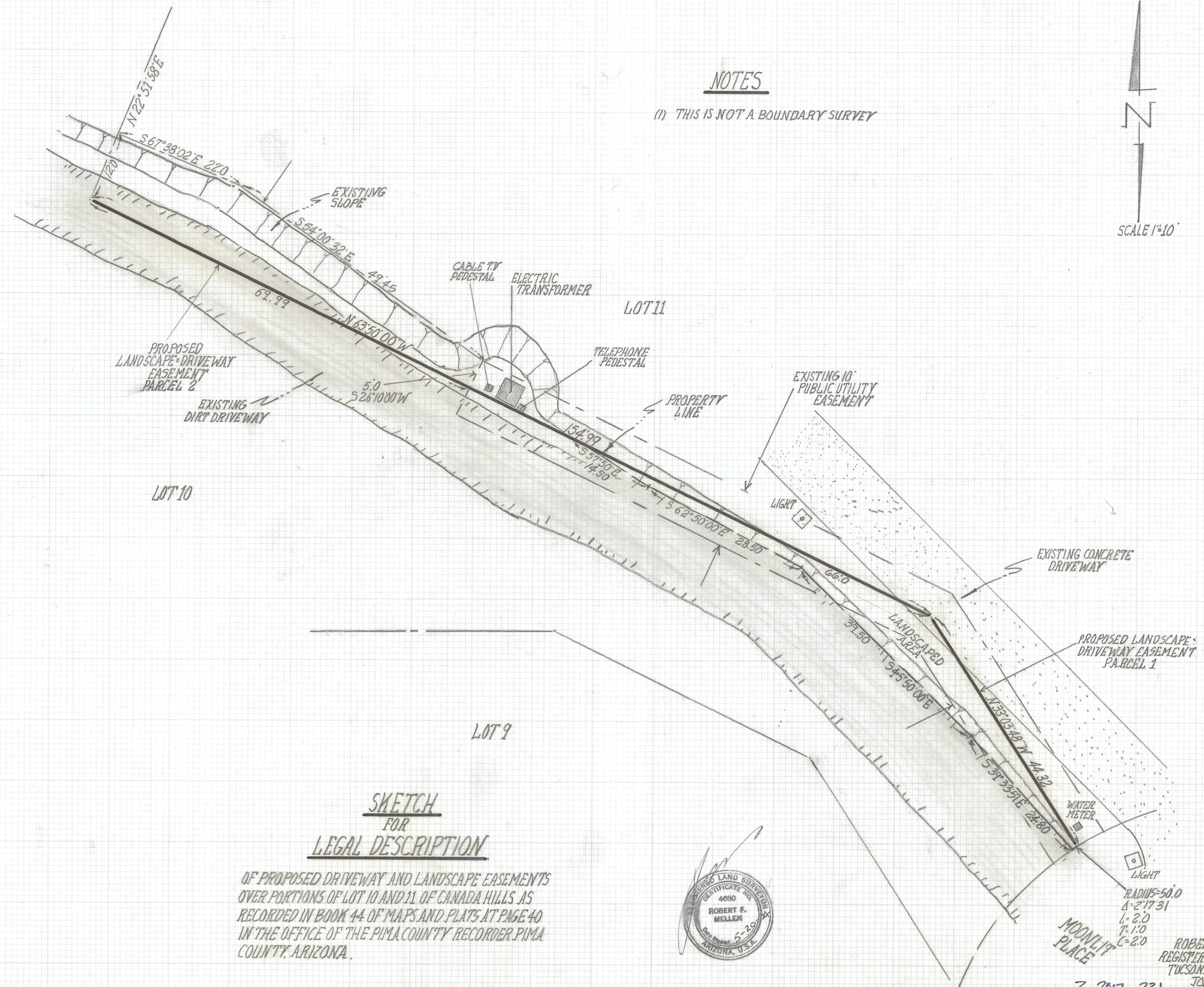
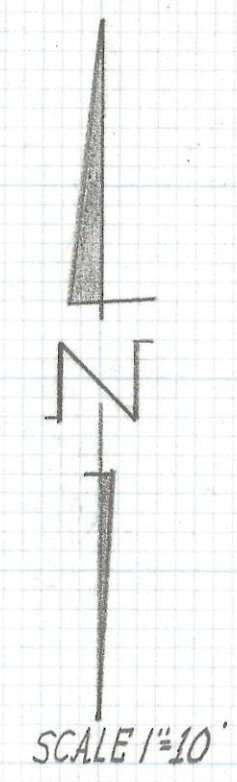


DISCLAIMER:

This unrecorded Record of Survey was donated to the City of Tucson. The City of Tucson provides this data for your personal use "as is." Additionally, the City of Tucson provides this information with the understanding that it is not guaranteed to be accurate, correct or complete and conclusions drawn from such information are the responsibility of the user.

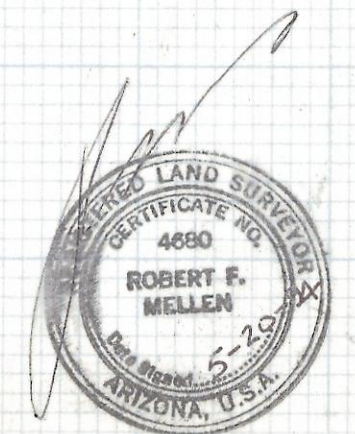
NOTES

(1) THIS IS NOT A BOUNDARY SURVEY



SKETCH
FOR
LEGAL DESCRIPTION

OF PROPOSED DRIVEWAY AND LANDSCAPE EASEMENTS
OVER PORTIONS OF LOT 10 AND 11 OF CANADA HILLS AS
RECORDED IN BOOK 44 OF MAPS AND PLATS AT PAGE 40
IN THE OFFICE OF THE PIMA COUNTY RECORDER PIMA
COUNTY, ARIZONA.



MOONLIT
PLACE
RADIUS=50.0
A-2'17.31
L-2.0
T-1.0
C-2.0

ROBERT F. MELLEN
REGISTERED LAND SURVEYOR
TUCSON, ARIZONA
JOB #93-53

Z-2017-231