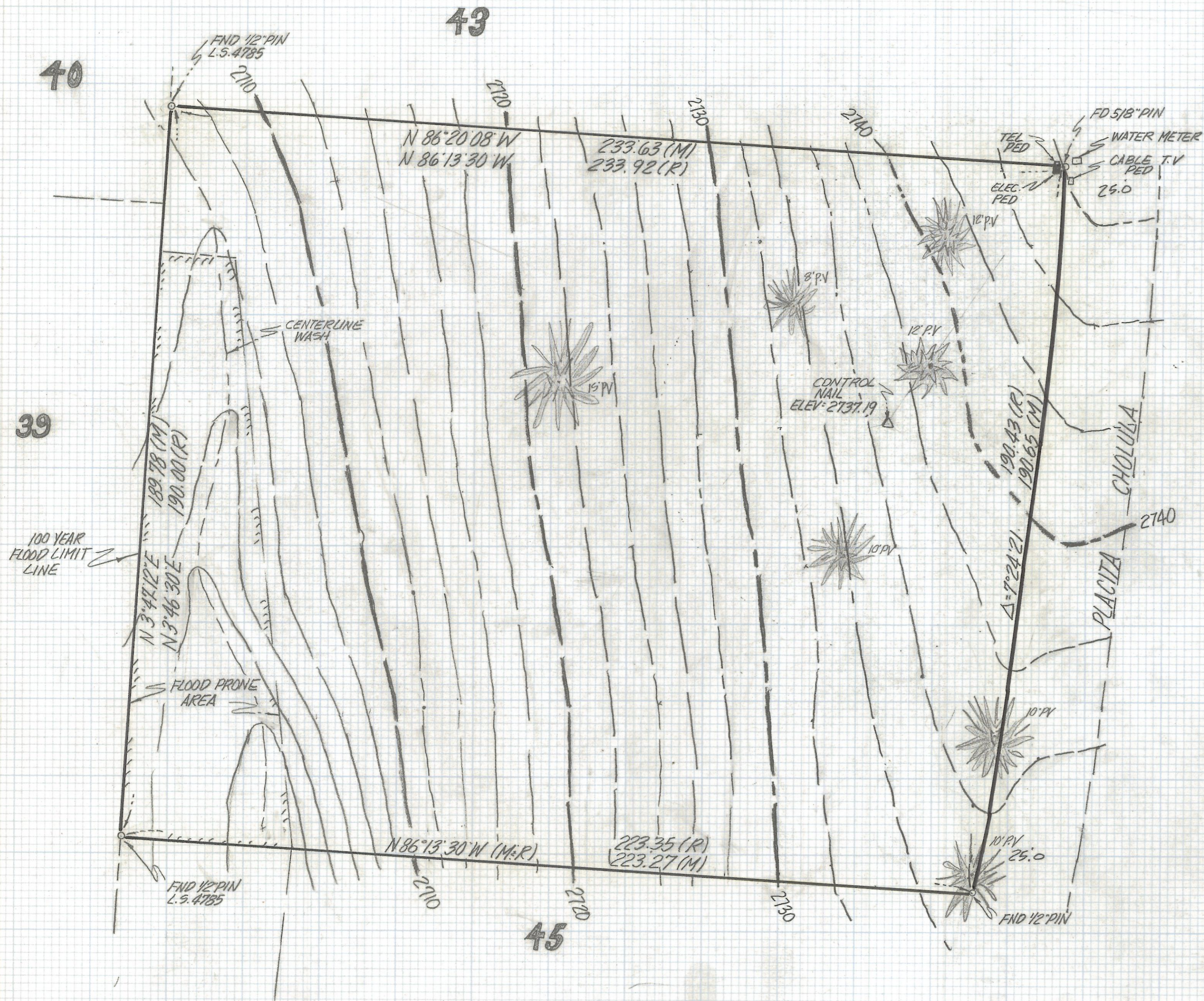


DISCLAIMER:

This unrecorded Record of Survey was donated to the City of Tucson. The City of Tucson provides this data for your personal use "as is." Additionally, the City of Tucson provides this information with the understanding that it is not guaranteed to be accurate, correct or complete and conclusions drawn from such information are the responsibility of the user.



CURVE DATA				
Nº	RADIUS	DELTA	TANGENT	LENGTH CHORD
1	1475.00	7°24'21"	95.46	190.65 190.52

NOTES

- (1) 9 - INDICATES SET 1/2" PIN MKD L.S. 4680 UNLESS NOTED
- (2) M - MEASURED
- (3) R - MAP OR DEED RECORD
- (4) * - CONTOUR INTERVAL 2.0
- (5) * BASIS OF BEARINGS N 86°13'30" W SOUTH LINE LOT 44 LOS CERROS DE KINO BOOK 27 PAGE 34 MAPS AND PLATS
- (6) 10 PV INDICATES PALO VERDE TREE & HEIGHT
- (7) BENCHMARK DATUM TAKEN FROM PIMA COUNTY STREET IMPROVEMENT PLAN, PROJECT N°11173 SHT 6 OF 11

TOPOGRAPHICAL SURVEY

OF
 OF LOT 44 LOS CERROS DE KINO RECORDED IN BOOK 27 OF MAPS AND PLATS AT PAGE 34 IN THE OFFICE OF THE PIMA COUNTY RECORDER PIMA COUNTY ARIZONA



Z-2017-248

REVISIONS		DATE
1	ROBERT F. MELLEN	5-14-93
2	REGISTERED LAND SURVEYOR	DR BY: EMT CKBY: REM
3	1250 W. MOHAVE ST. TUCSON, ARIZONA	JOB NO. 93-79
4	(602) 833-1012	SCALE: 1"=20'
5		SHEET 1 OF 1