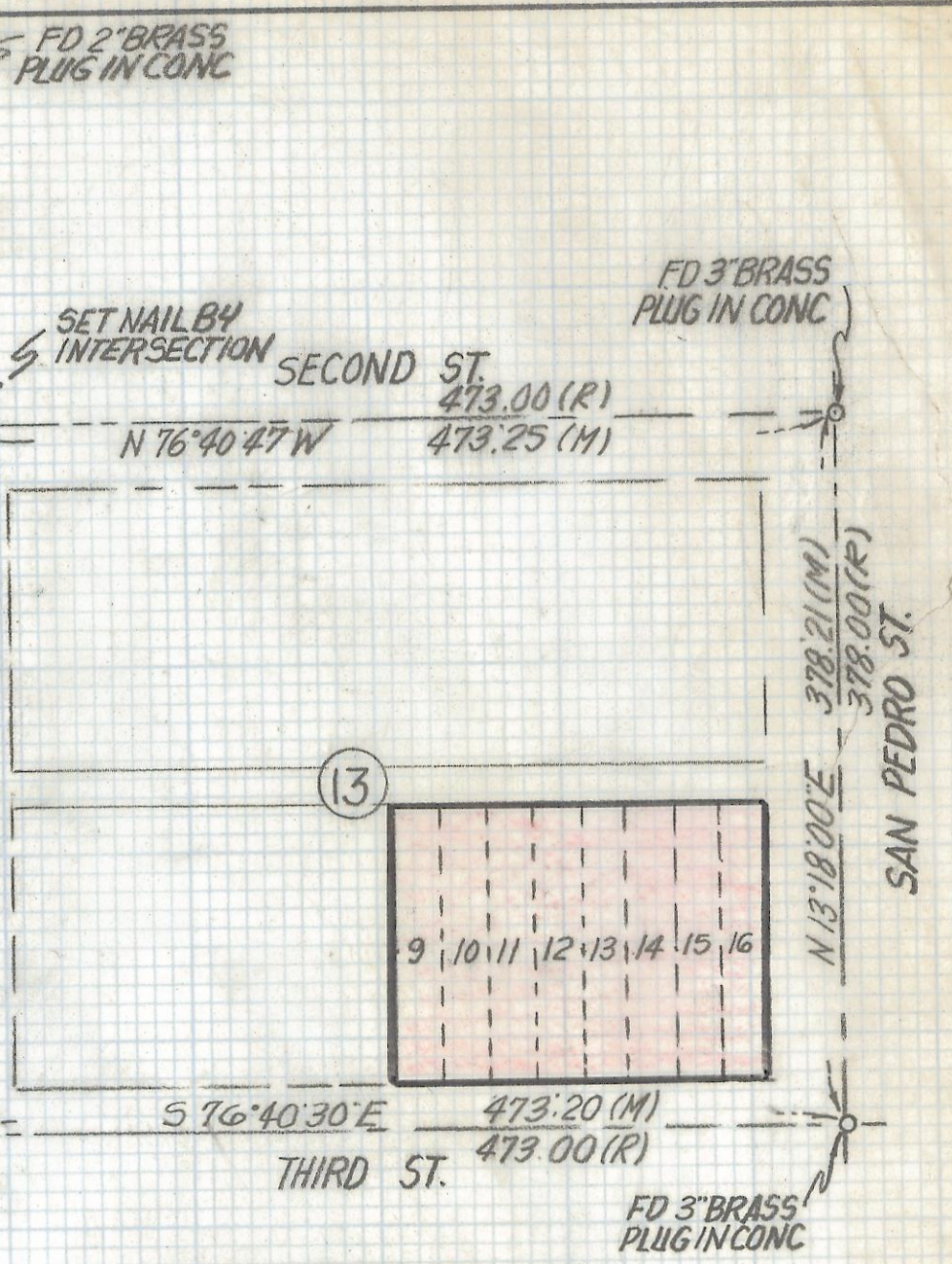
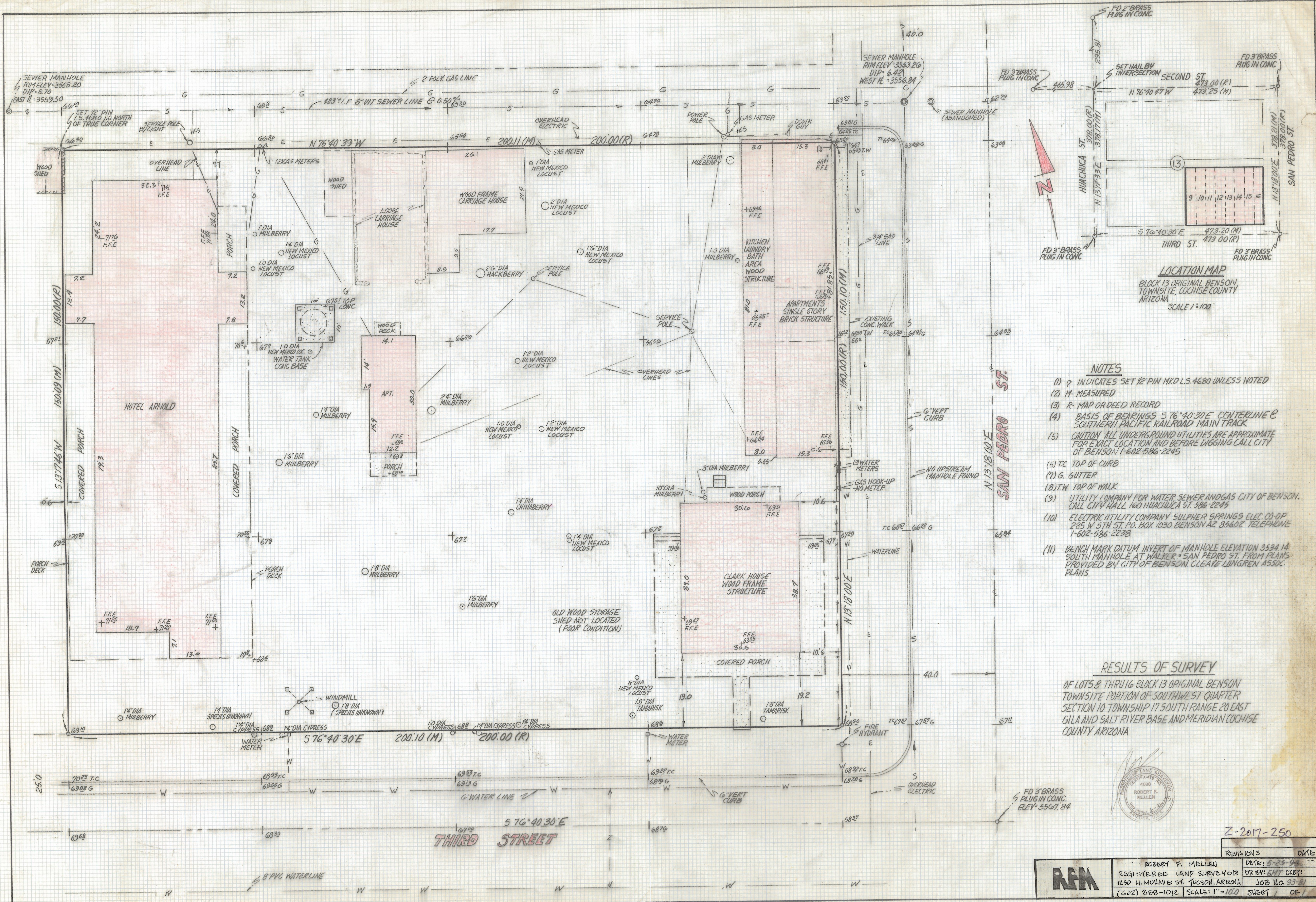


DISCLAIMER:

This unrecorded Record of Survey was donated to the City of Tucson. The City of Tucson provides this data for your personal use "as is." Additionally, the City of Tucson provides this information with the understanding that it is not guaranteed to be accurate, correct or complete and conclusions drawn from such information are the responsibility of the user.



LOCATION MAP
 BLOCK 13 ORIGINAL BENSON TOWNSITE, COCHISE COUNTY ARIZONA
 SCALE 1"=100'

NOTES

- (1) ϕ INDICATES SET 1/2" PIN MKD L.S. 4680 UNLESS NOTED
- (2) M- MEASURED
- (3) R- MAP OR DEED RECORD
- (4) BASIS OF BEARINGS 576°40'30"E CENTERLINE @ SOUTHERN PACIFIC RAILROAD MAIN TRACK
- (5) CAUTION ALL UNDERGROUND UTILITIES ARE APPROXIMATE FOR EXACT LOCATION AND BEFORE DIGGING CALL CITY OF BENSON 1-602-586-2245
- (6) T.C. TOP OF CURB
- (7) G. GUTTER
- (8) T.W. TOP OF WALK
- (9) UTILITY COMPANY FOR WATER SEWER AND GAS CITY OF BENSON. CALL CITY HALL 160 HUACHUCA ST. 586-2245
- (10) ELECTRIC UTILITY COMPANY SULPHUR SPRINGS ELEC. CO. OP 285 W 5TH ST. P.O. BOX 1030 BENSON AZ 85602 TELEPHONE 1-602-586-2238
- (11) BENCH MARK DATUM INVERT OF MANHOLE ELEVATION 3534.14 SOUTH MANHOLE AT WALKER - SAN PEDRO ST. FROM PLANS PROVIDED BY CITY OF BENSON. CLEAVE LINGREN ASSOC. PLANS.

RESULTS OF SURVEY

OF LOTS 8 THRU 16 BLOCK 13 ORIGINAL BENSON TOWNSITE PORTION OF SOUTHWEST QUARTER SECTION 10 TOWNSHIP 17 SOUTH RANGE 20 EAST GILA AND SALT RIVER BASE AND MERIDIAN COCHISE COUNTY ARIZONA



FD 3" BRASS PLUG IN CONC. ELEV. 3567.84

Z-2017-250

REVISIONS	DATE
RFM	5-25-92
REGISTERED LAND SURVEYOR	DR BY: GNT CKEY
1250 W. MOHAVE ST. TUCSON, ARIZONA	JOB NO. 93-81
(602) 888-1012	SCALE: 1"=100
	SHEET 1 OF 1