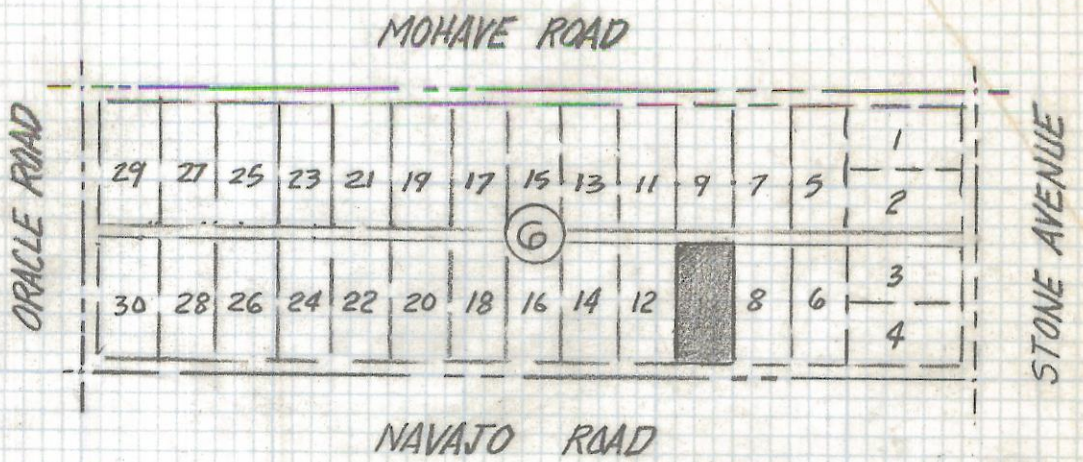


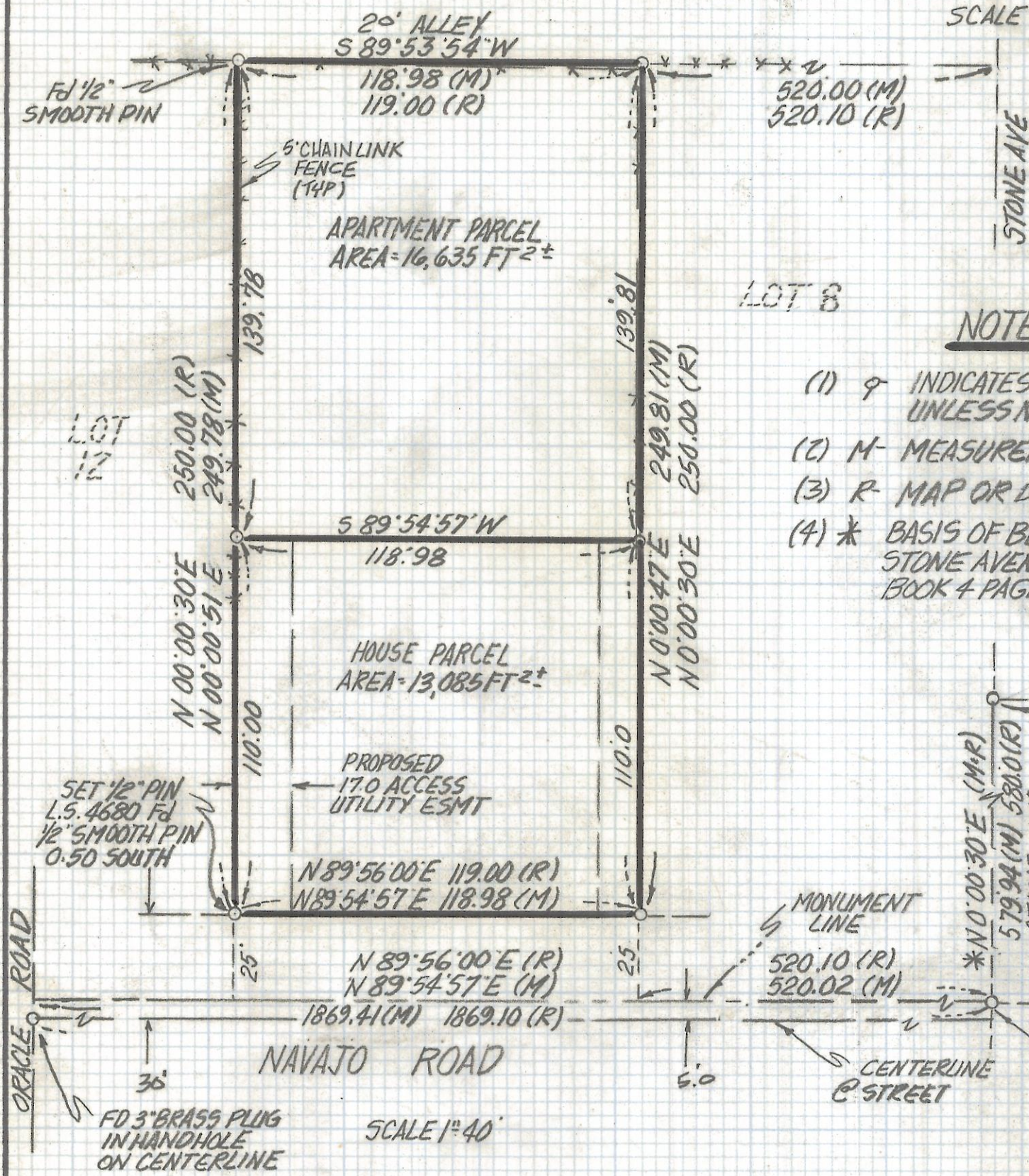
# **DISCLAIMER:**

**This unrecorded Record of Survey was donated to the City of Tucson. The City of Tucson provides this data for your personal use "as is." Additionally, the City of Tucson provides this information with the understanding that it is not guaranteed to be accurate, correct or complete and conclusions drawn from such information are the responsibility of the user.**



**LOCATION MAP**  
 BLOCK 6 SAWTELLE PLACE  
 BOOK 4 PAGE 73 MAPS & PLATS  
 PIMA COUNTY ARIZ.

SCALE 1"=400'



LOT 8

**NOTES**

- (1) ♀ INDICATES SET 1/2" PIN MKD L.S. 4680 UNLESS NOTED
- (2) M- MEASURED
- (3) R- MAP OR DEED RECORD
- (4) \* BASIS OF BEARINGS N 00°00'30" E CENTERLINE STONE AVENUE PER SAWTELLE PLACE, BOOK 4 PAGE 73 MAPS & PLATS

**RESULTS OF SURVEY**

OF LOT 10 BLOCK 6 SAWTELLE PLACE AS RECORDED IN BOOK 4 OF MAPS AND PLATS AT PAGE 73 IN THE OFFICE OF THE PIMA COUNTY RECORDER PIMA COUNTY, ARIZONA



ROBERT F. MELLEN  
 REGISTERED LAND SURVEYOR  
 TUCSON, ARIZONA  
 JOB #93-85