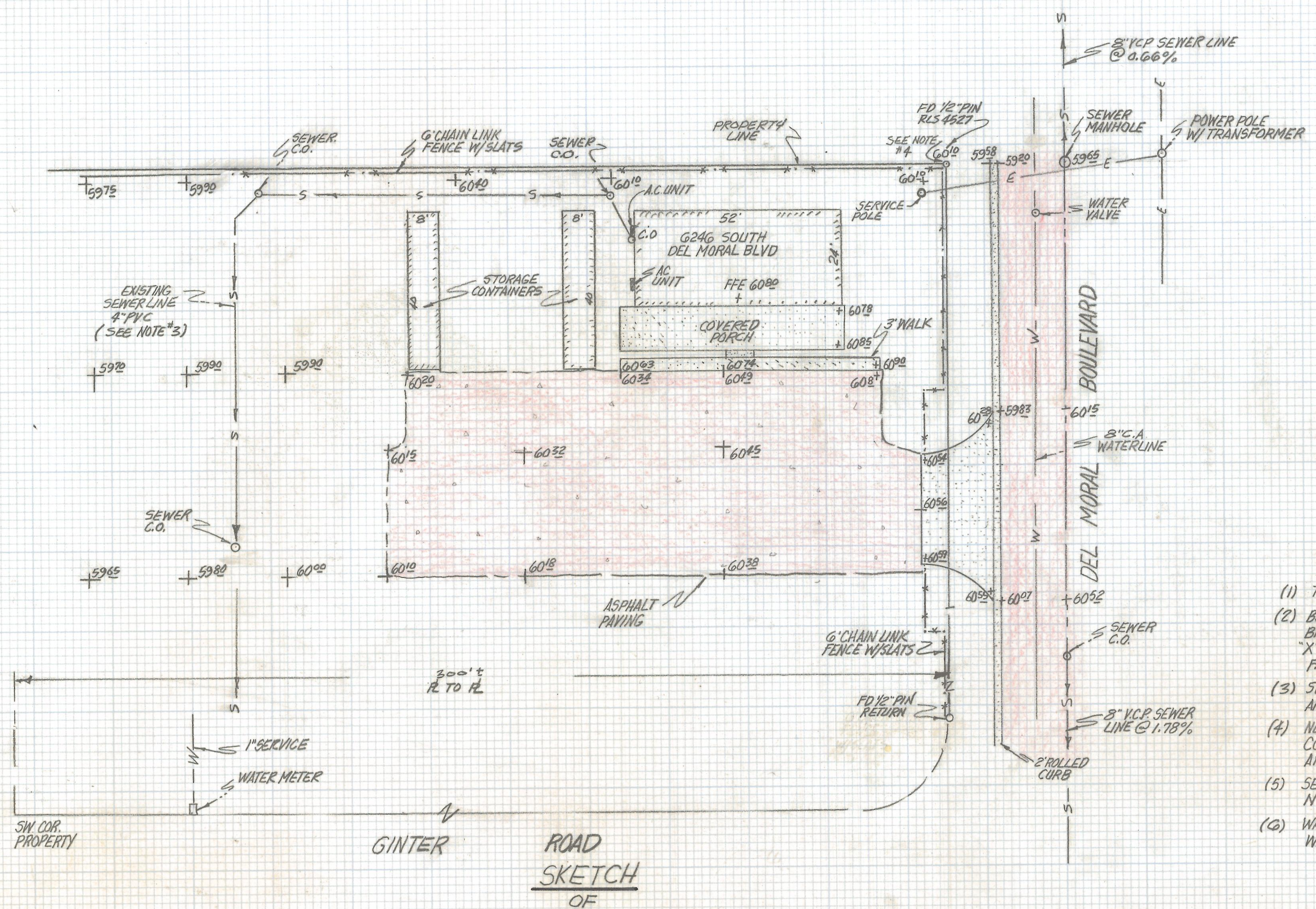


DISCLAIMER:

This unrecorded Record of Survey was donated to the City of Tucson. The City of Tucson provides this data for your personal use "as is." Additionally, the City of Tucson provides this information with the understanding that it is not guaranteed to be accurate, correct or complete and conclusions drawn from such information are the responsibility of the user.



NOTES

- (1) THIS IS NOT A BOUNDARY SURVEY
- (2) BENCHMARK ELEV. 2561.68 N.W. CORNER BILBY AND CAMPBELL TOP OF CURB RETURN "X" IN CONCRETE, PER CITY OF TUCSON DATUM F.B. 1582 PAGE 72
- (3) SEE OWNER DON THOMPSON ON LOCATION AND USE OF THIS LINE
- (4) NEAREST FIRE HYDRANT, 280'± NORTH OF N.E. CORNER OF PROPERTY, S.W. CORNER GANLEY RD. AND DEL MORAL BLVD.
- (5) SEWER DATA PER CITY OF TUCSON, SEWER PLAN N° I-72-50 SHEET 13 OF 15
- (6) WATERLINE DATA TAKEN FROM CITY OF TUCSON WATER MAP SE1/4 7-15-14

EXISTING GRADES OVER A PORTION OF LOT 195 LOS RANCHITOS #5 RECORDED IN BOOK 9 OF MAPS AND PLATS AT PAGE 96 IN THE OFFICE OF THE PIMA COUNTY RECORDER PIMA COUNTY ARIZONA



Z-2017-259

REVISIONS		DATE
RFM	ROBERT F. MELLEN	DATE: 6-22-93
	REGISTERED LAND SURVEYOR	DR BY: ENT CK BY: RFM
	1250 W. MOHAVE ST. TUCSON, ARIZONA	JOB No. 93-97
(602) 888-1012	SCALE: 1" = 20'	SHEET 1 OF 1