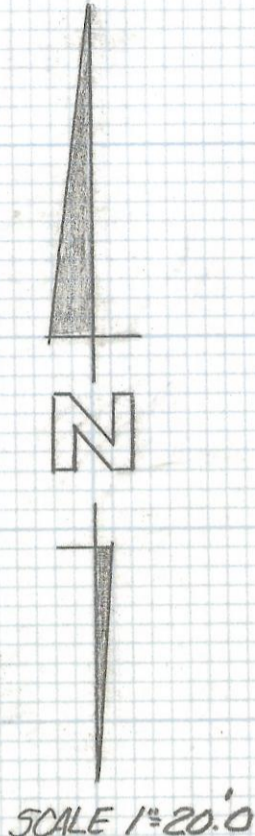
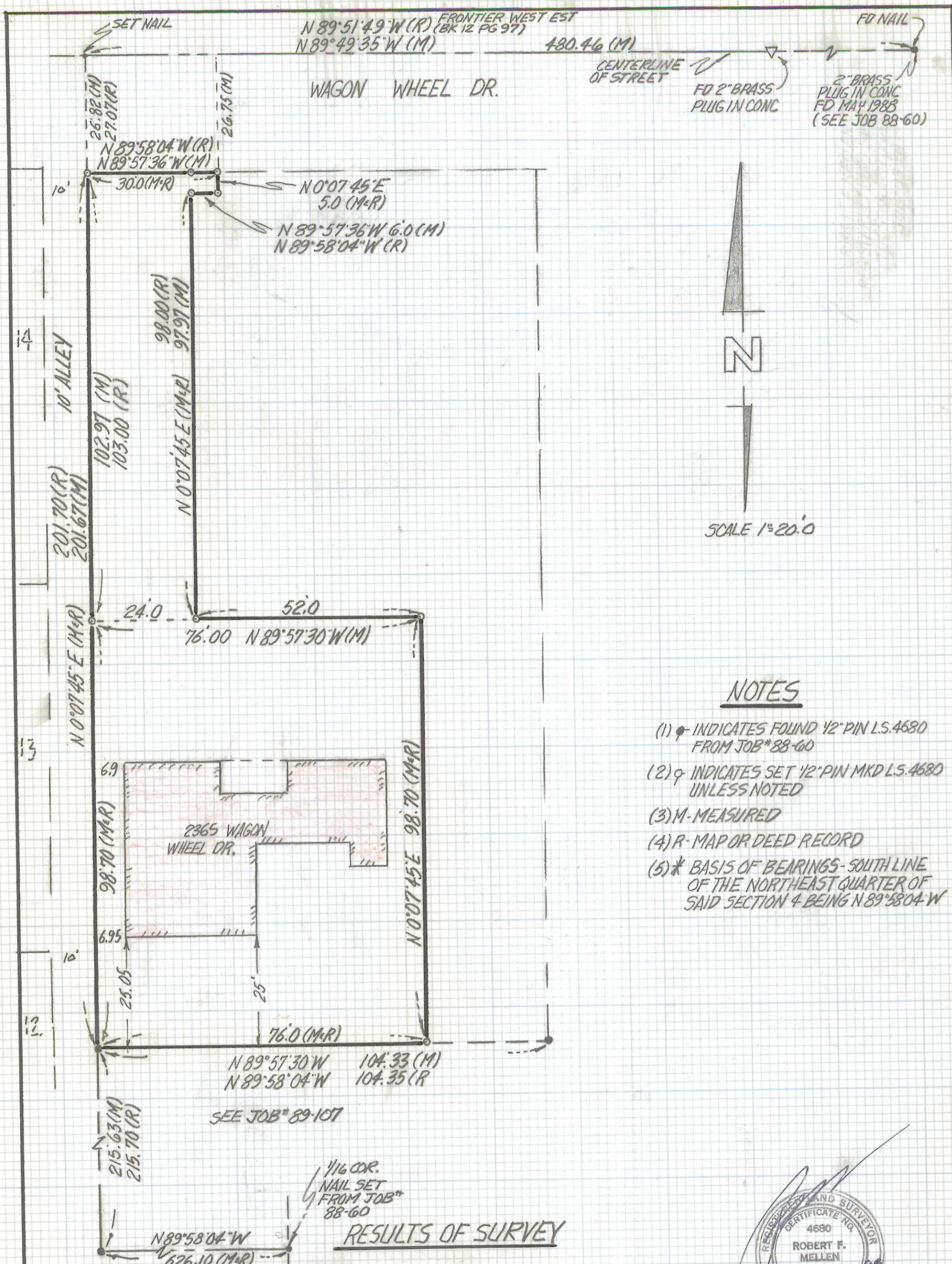


DISCLAIMER:

This unrecorded Record of Survey was donated to the City of Tucson. The City of Tucson provides this data for your personal use "as is." Additionally, the City of Tucson provides this information with the understanding that it is not guaranteed to be accurate, correct or complete and conclusions drawn from such information are the responsibility of the user.



NOTES

- (1) ♀ INDICATES FOUND 1/2" PIN L.S. 4680 FROM JOB* 88-60
- (2) ♀ INDICATES SET 1/2" PIN MKD L.S. 4680 UNLESS NOTED
- (3) M-MEASURED
- (4) R-MAP OR DEED RECORD
- (5) * BASIS OF BEARINGS - SOUTH LINE OF THE NORTHEAST QUARTER OF SAID SECTION 4 BEING N 89°58'04"W

RESULTS OF SURVEY

OF A PORTION OF THE SOUTHWEST QUARTER OF THE NORTHEAST QUARTER OF SECTION 4 TOWNSHIP 14 SOUTH RANGE 13 EAST GILA AND SALT RIVER BASE AND MERIDIAN PIMA COUNTY ARIZONA



ROBERT F. MELLEN
 REGISTERED LAND SURVEYOR
 TUCSON, ARIZONA
 JOB# 93-101
 Z-2017-261