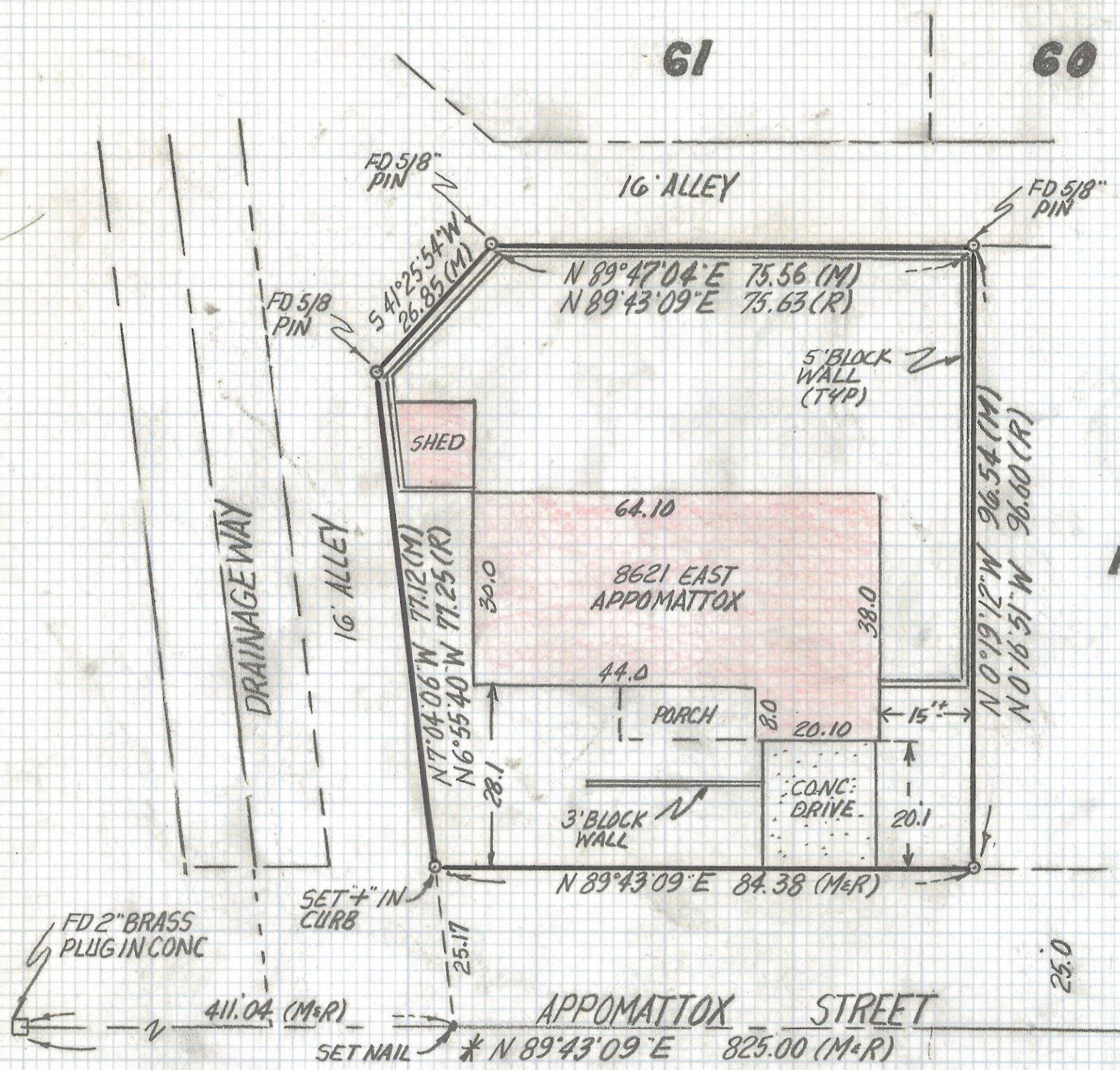


# **DISCLAIMER:**

**This unrecorded Record of Survey was donated to the City of Tucson. The City of Tucson provides this data for your personal use "as is." Additionally, the City of Tucson provides this information with the understanding that it is not guaranteed to be accurate, correct or complete and conclusions drawn from such information are the responsibility of the user.**



NOTES

- (1) ♀ INDICATES SET 1/2" PIN MKD L.S. 4680 UNLESS NOTED
- (2) M- MEASURED
- (3) R- MAP OR DEED RECORD
- (4) \* BASIS OF BEARINGS N 89° 43' 09" E CENTERLINE APPOMATTOX STREET PER CENTENNIAL PARK BOOK 15 PAGE 92 MAPS AND PLATS

RESULTS OF SURVEY

OF LOT III CENTENNIAL PARK RECORDED IN BOOK 15 OF MAPS AND PLATS AT PAGE 92 IN THE OFFICE OF THE PIMA COUNTY RECORDER PIMA COUNTY, ARIZONA



ROBERT F. MELLEN  
REGISTERED LAND SURVEYOR  
TUCSON, ARIZONA  
JOB# 93-111  
Z-2017-267