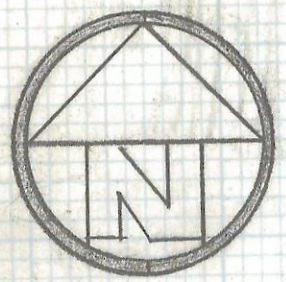
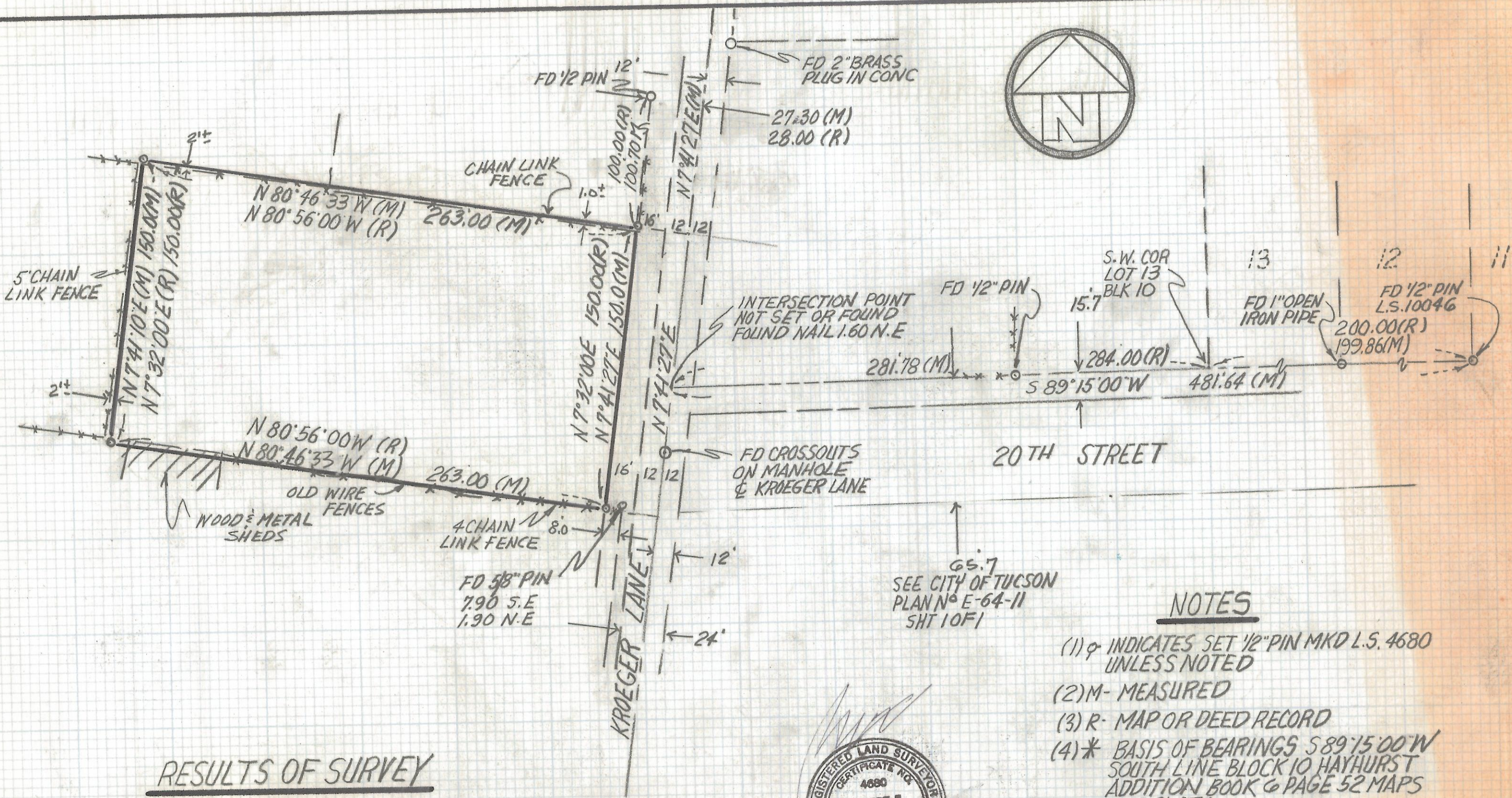


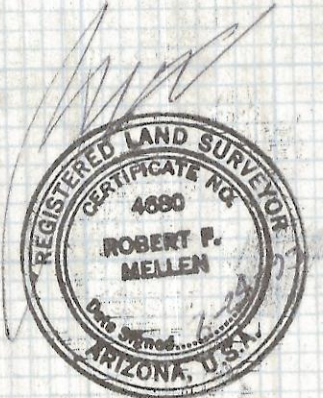
DISCLAIMER:

This unrecorded Record of Survey was donated to the City of Tucson. The City of Tucson provides this data for your personal use "as is." Additionally, the City of Tucson provides this information with the understanding that it is not guaranteed to be accurate, correct or complete and conclusions drawn from such information are the responsibility of the user.



RESULTS OF SURVEY

OF A PORTION OF THE SOUTHEAST QUARTER
 OF SECTION 14 TOWNSHIP 14 SOUTH RANGE
 13 EAST GILA AND SALT RIVER BASE AND MERIDIAN
 PIMA COUNTY, ARIZONA



NOTES

- (1) ♀ INDICATES SET 1/2" PIN MKD L.S. 4680 UNLESS NOTED
- (2) M- MEASURED
- (3) R- MAP OR DEED RECORD
- (4) * BASIS OF BEARINGS S 89° 15' 00" W SOUTH LINE BLOCK 10 HAYHURST ADDITION BOOK 6 PAGE 52 MAPS AND PLATS.

65.7
 SEE CITY OF TUCSON
 PLAN NO E-64-11
 SHT 1 OF 1

| REVISIONS | DATE |
|-----------|-----------------------|
| | DATE: 8-23-93 |
| | DR BY: EMT CK BY: RFM |
| | JOB NO. 93-122 |
| | SHEET 1 OF 1 |

RFM
 ROBERT F. MELLEN
 REGISTERED LAND SURVEYOR
 1250 W. MOHAVE ST. TUCSON, ARIZONA.
 (602) 888-1012

SCALE: 1" = 50'

Z-2017-272