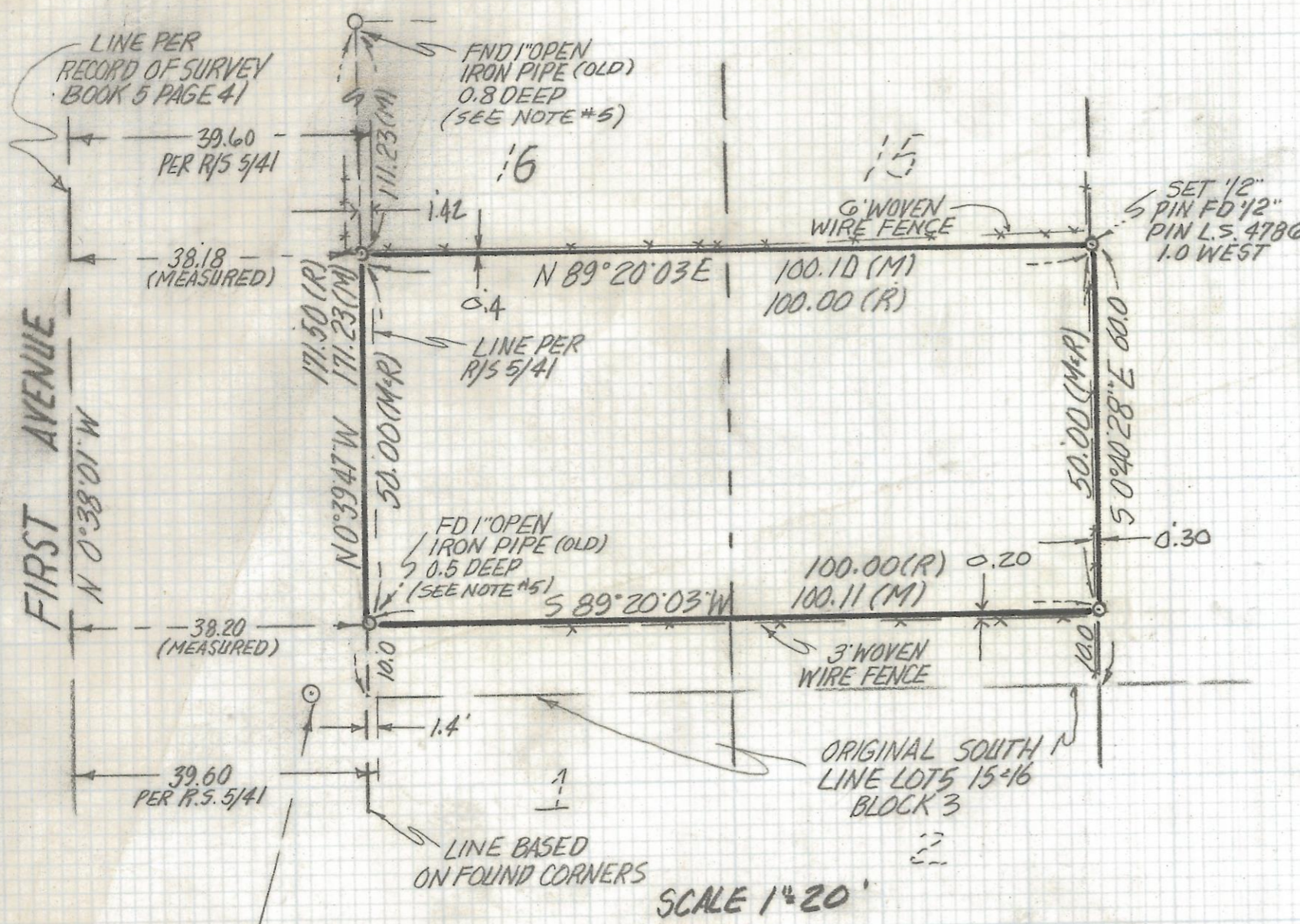


DISCLAIMER:

This unrecorded Record of Survey was donated to the City of Tucson. The City of Tucson provides this data for your personal use "as is." Additionally, the City of Tucson provides this information with the understanding that it is not guaranteed to be accurate, correct or complete and conclusions drawn from such information are the responsibility of the user.

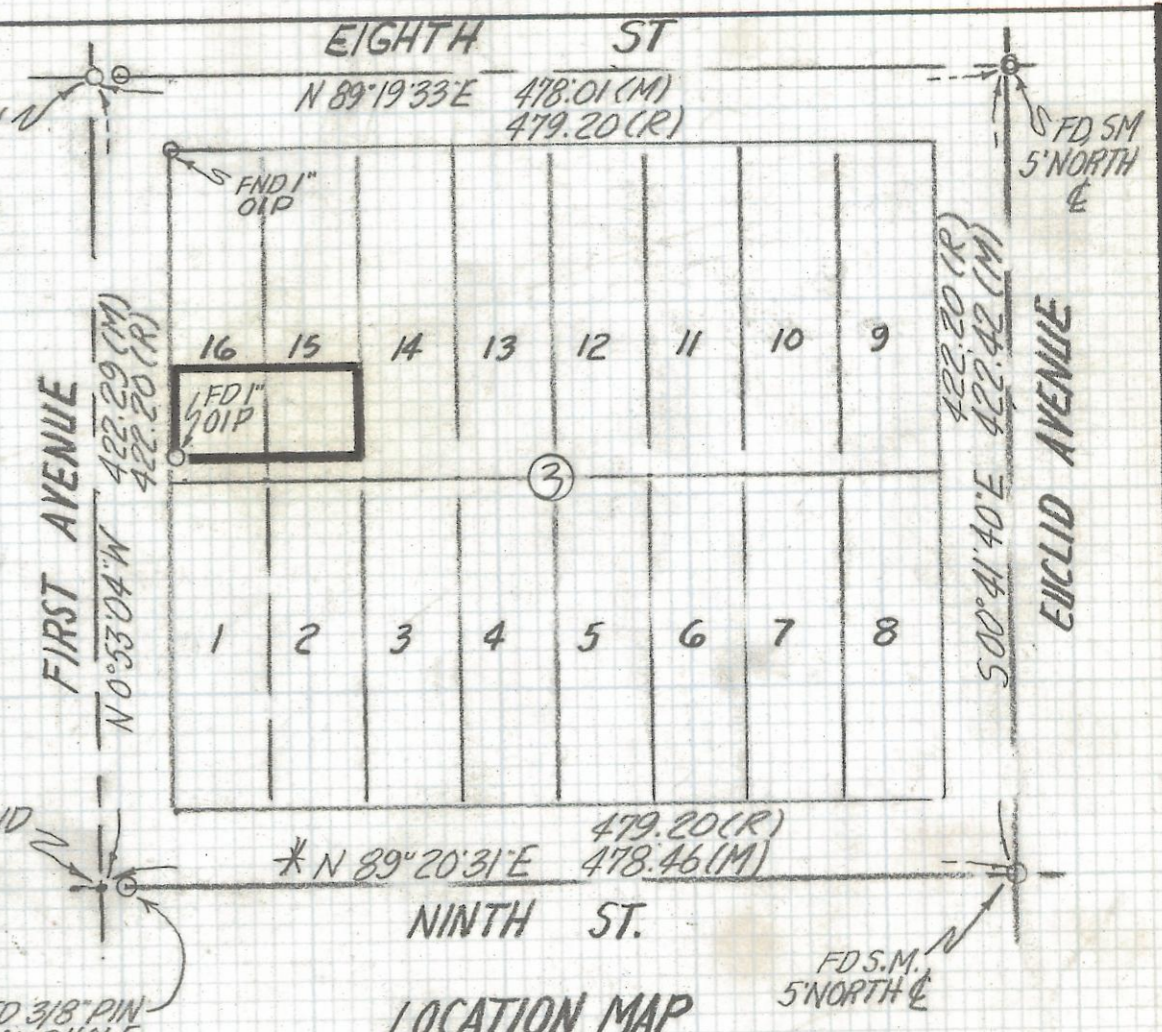


EXISTING POWER POLE
SET NAIL IN NORTHSIDE
OF POWER POLE ELEV. 2392.90
BASED ON N.G.V.D.

RESULTS OF SURVEY

OF THE NORTH 50 FEET OF THE SOUTH 60 FEET OF
LOTS 15 AND 16 BLOCK 3 OF RIECKERS ADDITION AS
RECORDED IN BOOK 3 OF MAPS AND PLATS AT PAGE 58
IN THE OFFICE OF THE PIMA COUNTY RECORDER
PIMA COUNTY, ARIZONA

SCALE 1"=20'



LOCATION MAP
BLOCK 3 RIECKERS ADDITION
BOOK 3 PAGE 58 MAPS & PLATS
PIMA COUNTY ARIZONA
SCALE 1"=100'

NOTES

- (1) ♀ INDICATES SET 1/2" PIN MKD L.S. 4680 UNLESS NOTED
- (2) M- MEASURED
- (3) R- MAP OR DEED RECORD
- (4) * BASIS OF BEARINGS N 89° 20' 31" E MONUMENT
LINE PER RECORD OF SURVEY BOOK 5 PAGE 41
- (5) WE BELIEVE THAT THESE OLD CORNERS MORE NEARLY
REPRESENTS THE ORIGINAL WEST LINE OF BLOCK 3,
THAN THE LINE SHOWN IN RECORD OF SURVEY BOOK 5
PAGE 41



ROBERT F MELLEN
REGISTERED LAND SURVEYOR
TUCSON, ARIZONA
JOB # 93-134

Z-2017-279