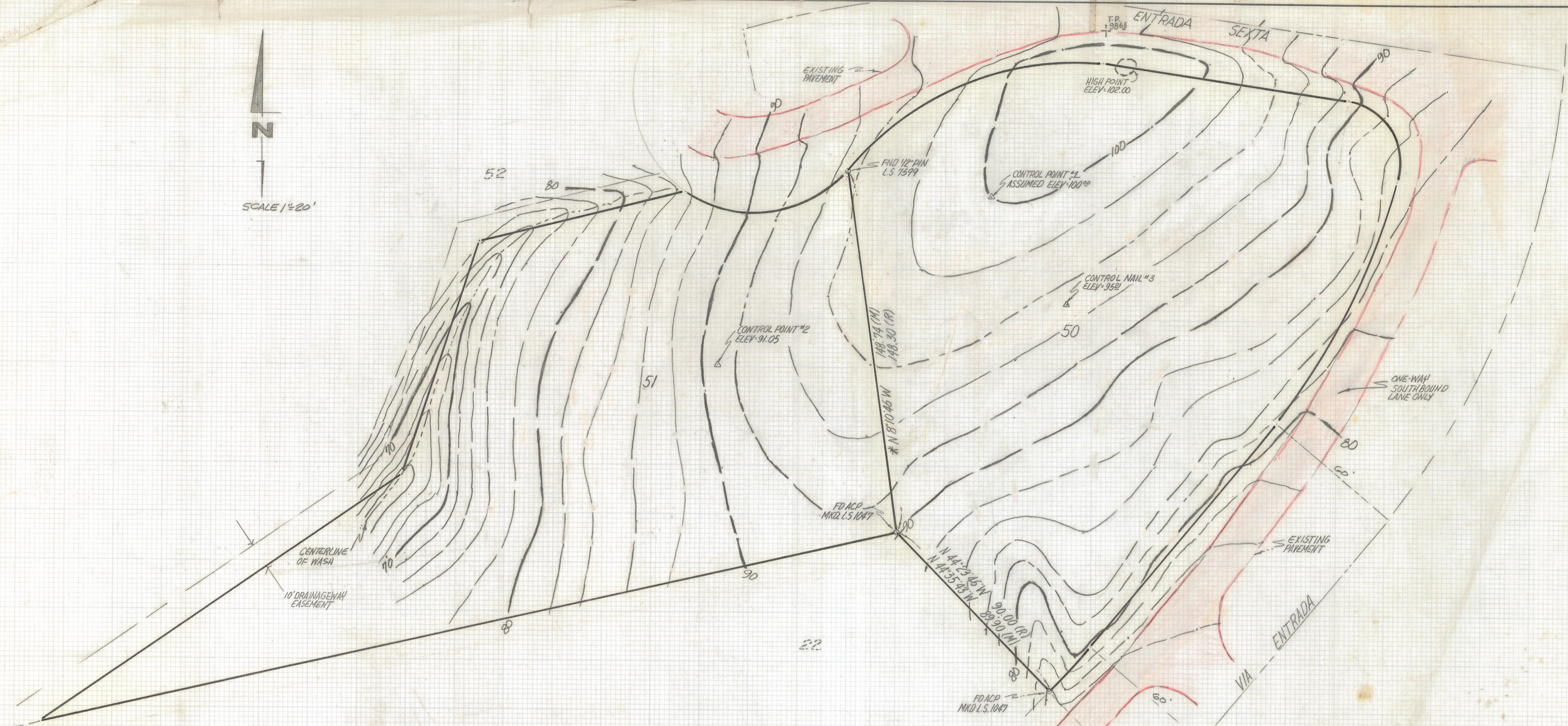
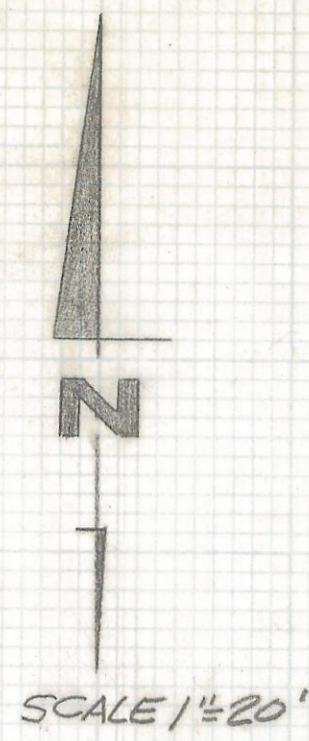


DISCLAIMER:

This unrecorded Record of Survey was donated to the City of Tucson. The City of Tucson provides this data for your personal use "as is." Additionally, the City of Tucson provides this information with the understanding that it is not guaranteed to be accurate, correct or complete and conclusions drawn from such information are the responsibility of the user.



NOTES

- (1) THIS IS NOT A BOUNDARY SURVEY
- (2) CONTOUR INTERVAL 2 FEET
- (3) M-MEASURED
- (4) R- MAP OF REED RECORD
- (5) BENCHMARK CONTROL POINT #1 SET NAIL ASSUMED ELEVATION 100.00
- (6) T.P. TOP OF PAVEMENT

TOPOGRAPHICAL SURVEY
OF

LOTS 50 AND 51 CATALINA FOOTHILLS ESTATES N° 7 RECORDED IN BOOK 19 OF MAPS AND PLATS AT PAGE 8 IN THE OFFICE OF THE PIMA COUNTY RECORDER PIMA COUNTY, ARIZONA



Z-2017-280

REVISIONS	DATE
1	9/17/93

RFM REGISTERED LAND SURVEYOR
 1250 W. MONAHE ST. TUCSON, ARIZONA
 (602) 888-1012 SCALE: 1"=20' SHEET 1 OF 1