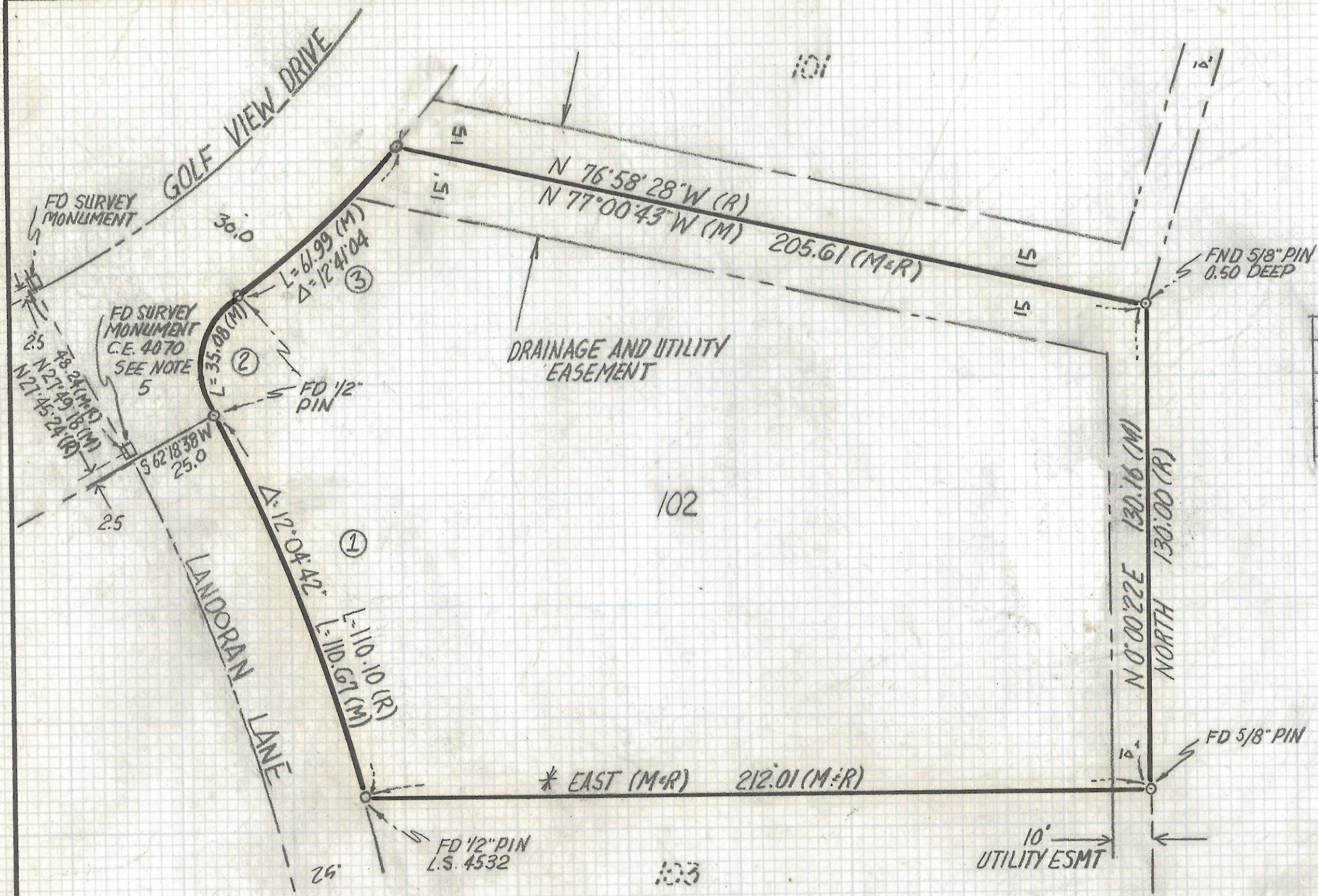


# **DISCLAIMER:**

**This unrecorded Record of Survey was donated to the City of Tucson. The City of Tucson provides this data for your personal use "as is." Additionally, the City of Tucson provides this information with the understanding that it is not guaranteed to be accurate, correct or complete and conclusions drawn from such information are the responsibility of the user.**



| CURVE DATA     |        |           |         |        |        |
|----------------|--------|-----------|---------|--------|--------|
| N <sup>o</sup> | RADIUS | DELTA     | TANGENT | LENGTH | CHORD  |
| 1              | 525.0  | 12°04'42" | 55.54   | 110.67 | 110.47 |
| 2              | 25.0   | 80°24'22" | 21.13   | 35.08  | 32.27  |
| 3              | 280.0  | 12°41'04" | 31.12   | 61.99  | 61.86  |



- NOTES**
- (1) ♂ INDICATES SET 1/2" PIN MKD L.S. 4680 UNLESS NOTED
  - (2) M- MEASURED
  - (3) R- MAP OR DEED RECORD
  - (4) \* BASIS OF BEARINGS EAST SOUTH LINE LOT 102 PER ORO VALLEY ESTATES BOOK 13 PAGE 60 MAPS AND PLATS
  - (5) THESE MONUMENTS DO NOT RELATE TO FOUND ORIGINAL CORNERS

**RESULTS OF SURVEY**

OF LOT 102 ORO VALLEY ESTATES RECORDED IN BOOK 13 OF MAPS AND PLATS AT PAGE 60 IN THE OFFICE OF THE PIMA COUNTY RECORDER PIMA COUNTY ARIZONA



ROBERT F. MELLEN  
 REGISTERED LAND SURVEYOR  
 TUCSON, ARIZONA  
 JOB# 93-139 Z-2017-281