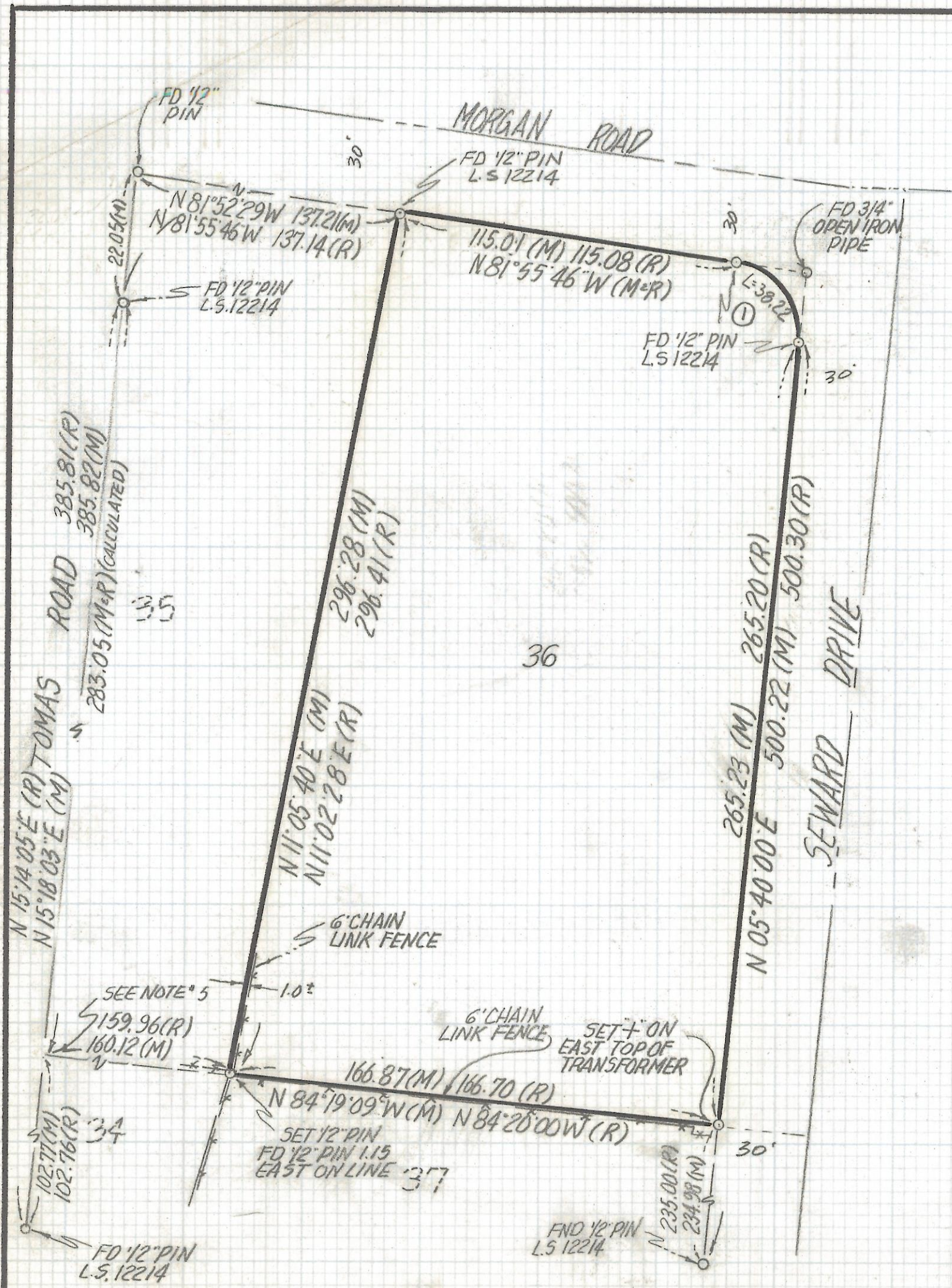


DISCLAIMER:

This unrecorded Record of Survey was donated to the City of Tucson. The City of Tucson provides this data for your personal use "as is." Additionally, the City of Tucson provides this information with the understanding that it is not guaranteed to be accurate, correct or complete and conclusions drawn from such information are the responsibility of the user.



CURVE DATA					
N ^o	RADIUS	DELTA	TANGENT	LENGTH	CHORD
1	26.0	87.3546	23.97	38.22	34.61



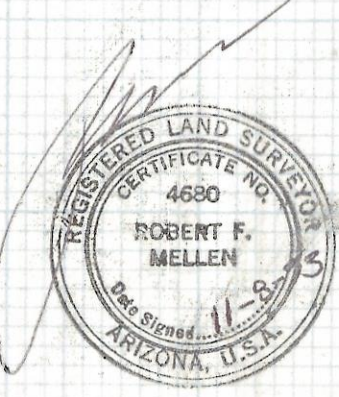
SCALE 1" = 40'

NOTES

- (1) ϕ INDICATES SET 1/2" PIN MKD L.S. 4680 UNLESS NOTED
- (2) M- MEASURED
- (3) R- MAP OR DEED RECORD
- (4) * BASIS OF BEARINGS N 05° 40' 00" E. EAST PROPERTY LINE LOT 36 ALSO KNOWN AS THE WEST RIGHT-OF-WAY LINE OF SEWARD DR. PER SAHUAROS GRANDE BOOK 32 PAGE 25 MAPS AND PLATS.
- (5) THE S.W. CORNER OF LOT 35 WAS NOT FOUND OR SET. THE LOCATION IS BASED ON FOUND ORIGINAL CORNERS.

RESULTS OF SURVEY

OF LOT 36 SAHUAROS GRANDES AS RECORDED IN BOOK 32 OF MAPS AND PLATS AT PAGE 25 IN THE OFFICE OF THE PIMA COUNTY RECORDER PIMA COUNTY ARIZONA.



ROBERT F. MELLEN
 REGISTERED LAND SURVEYOR
 TUCSON, ARIZONA
 JOB# 93-146