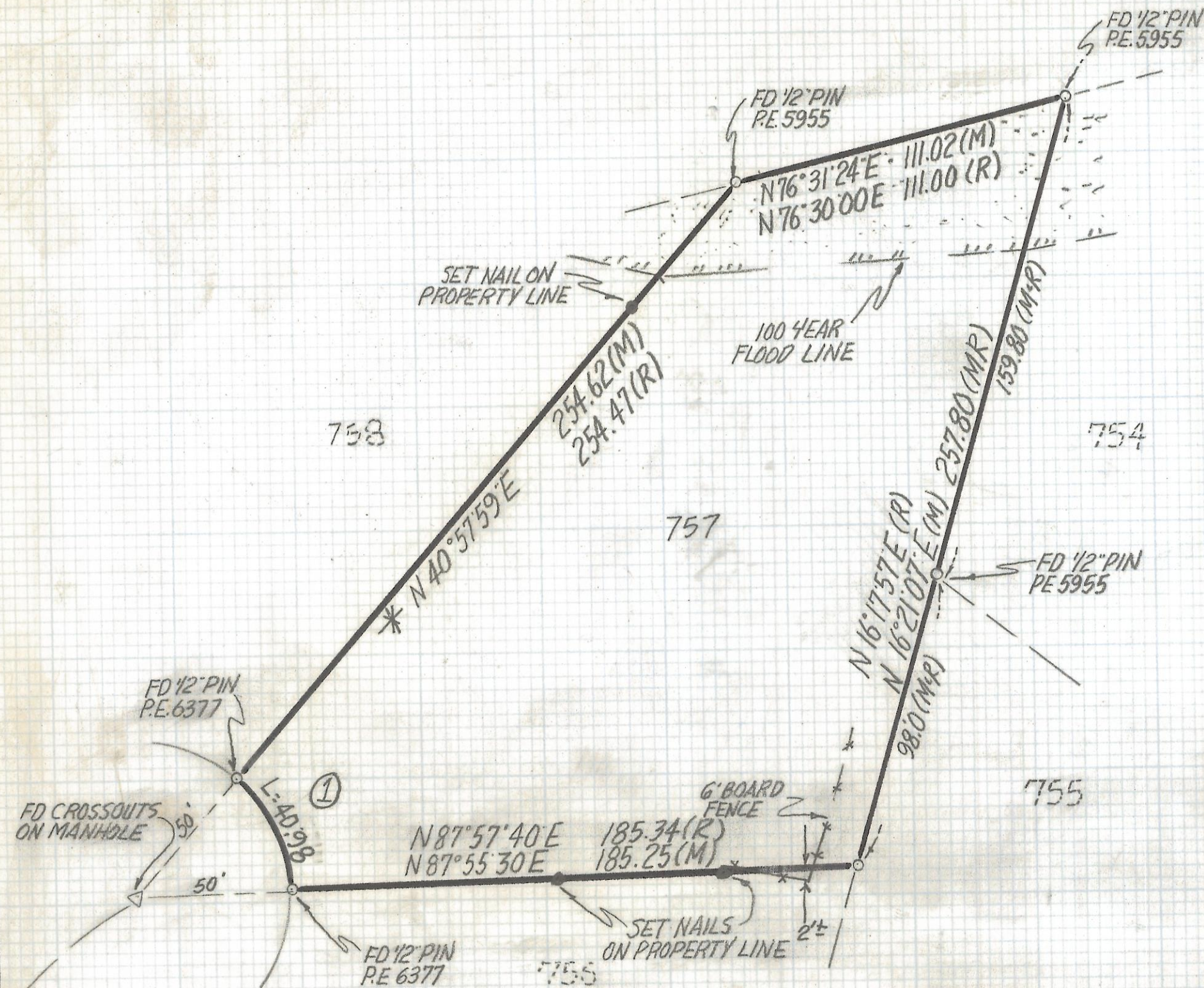
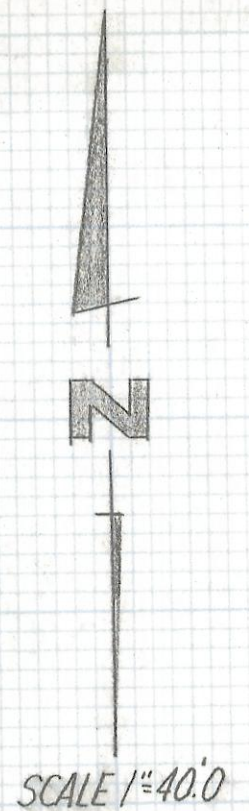


DISCLAIMER:

This unrecorded Record of Survey was donated to the City of Tucson. The City of Tucson provides this data for your personal use "as is." Additionally, the City of Tucson provides this information with the understanding that it is not guaranteed to be accurate, correct or complete and conclusions drawn from such information are the responsibility of the user.



CURVE DATA					
Nº	RADIUS	DELTA	TANGENT	LENGTH	CHORD
①	50.0	46°57'31	21.72	40.98	39.84



NOTES

- (1) INDICATES SET 1/2" PIN MKD L.S. 4680 UNLESS NOTED
- (2) M-MEASURED
- (3) R- MAP OR DEED RECORD
- (4) * BASIS OF BEARINGS N 40°57'59"E WESTERLY LINE LOT 757 CASAS ADOBES ESTATES BOOK 29 PAGE 10 MAPS AND PLATS.

RESULTS OF SURVEY

OF LOT 757 CASAS ADOBES ESTATES AS RECORDED IN BOOK 29 OF MAPS AND PLATS AT PAGE 10 IN THE OFFICE OF THE PIMA COUNTY RECORDER PIMA COUNTY, ARIZONA



ROBERT F. MELLEN
REGISTERED LAND SURVEYOR
TUCSON, ARIZONA
JOB# 93-175

Z-2017-296