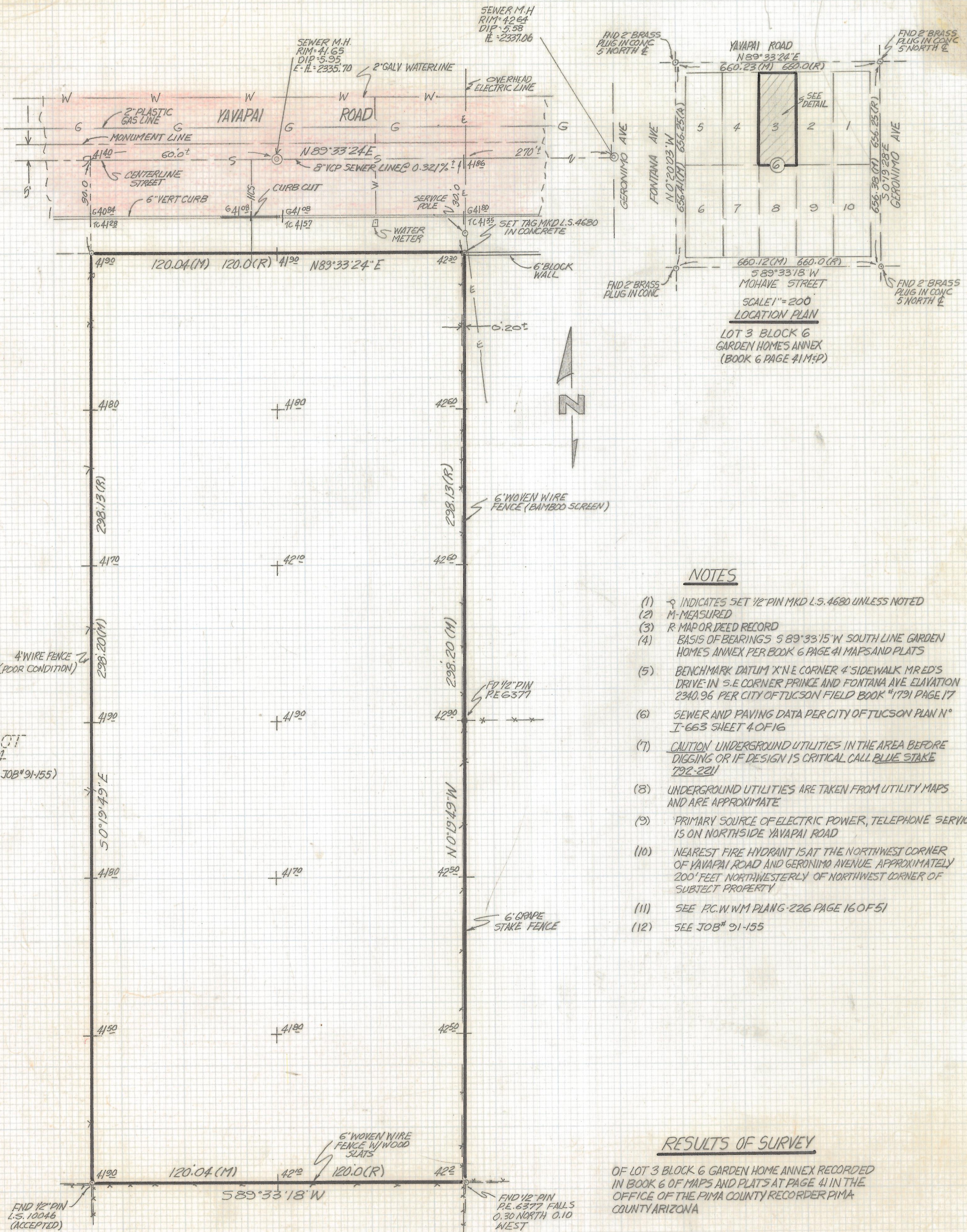


DISCLAIMER:

This unrecorded Record of Survey was donated to the City of Tucson. The City of Tucson provides this data for your personal use "as is." Additionally, the City of Tucson provides this information with the understanding that it is not guaranteed to be accurate, correct or complete and conclusions drawn from such information are the responsibility of the user.



NOTES

- (1) ♀ INDICATES SET 1/2" PIN MKD L.S. 4680 UNLESS NOTED
- (2) M- MEASURED
- (3) R- MAP OR DEED RECORD
- (4) BASIS OF BEARINGS S 89°33'15" W SOUTH LINE GARDEN HOME'S ANNEX PER BOOK 6 PAGE 41 MAPS AND PLATS
- (5) BENCHMARK DATUM X'N E CORNER 4' SIDEWALK MRED'S DRIVE IN S.E. CORNER PRINCE AND FONTANA AVE ELEVATION 2340.96 PER CITY OF TUCSON FIELD BOOK #1791 PAGE 17
- (6) SEWER AND PAVING DATA PER CITY OF TUCSON PLAN N° I-663 SHEET 4 OF 16
- (7) CAUTION UNDERGROUND UTILITIES IN THE AREA BEFORE DIGGING OR IF DESIGN IS CRITICAL CALL BLUE STAKE 792-2211
- (8) UNDERGROUND UTILITIES ARE TAKEN FROM UTILITY MAPS AND ARE APPROXIMATE
- (9) PRIMARY SOURCE OF ELECTRIC POWER, TELEPHONE SERVICE IS ON NORTHSIDE YAVAPAI ROAD
- (10) NEAREST FIRE HYDRANT IS AT THE NORTHWEST CORNER OF YAVAPAI ROAD AND GERONIMO AVENUE APPROXIMATELY 200 FEET NORTHWESTERLY OF NORTHWEST CORNER OF SUBJECT PROPERTY
- (11) SEE P.C. W.W.M PLANG-226 PAGE 16 OF 51
- (12) SEE JOB# 91-155

RESULTS OF SURVEY

OF LOT 3 BLOCK 6 GARDEN HOME ANNEX RECORDED IN BOOK 6 OF MAPS AND PLATS AT PAGE 41 IN THE OFFICE OF THE PIMA COUNTY RECORDER PIMA COUNTY ARIZONA

DETAIL
SCALE 1"=20'

Z-2017-297

REVISIONS 1-28-92 DATE

RFM	ROBERT F. MELLEN REGISTERED LAND SURVEYOR 1250 W. MONAWE ST. TUCSON, ARIZONA	DATE: 1-3-92 DR BY: EMT CKBY: RFM
	(602) 888-1012	JOB No. 92-1
	SCALE: 1"=20'	SHEET 1 OF 1