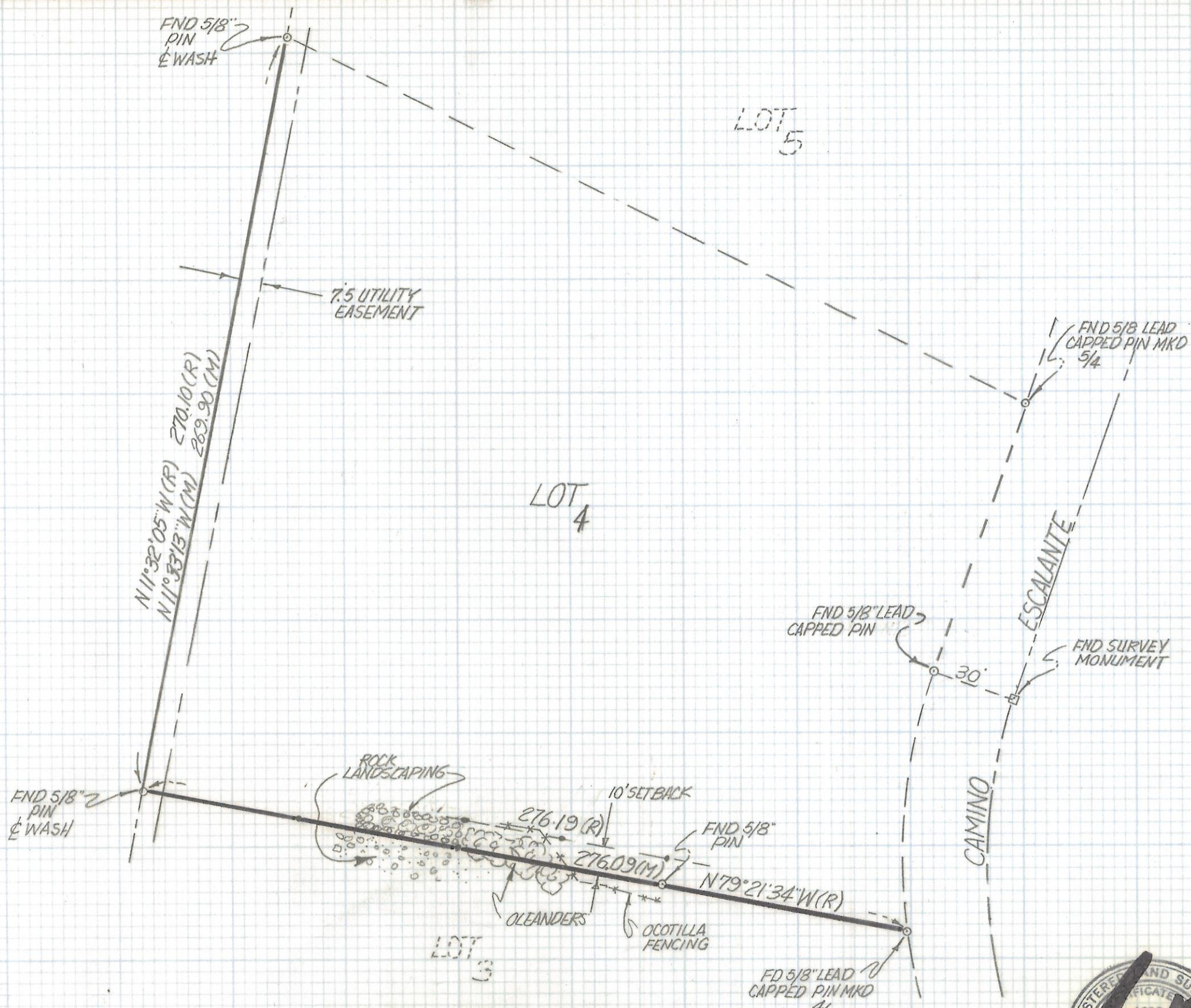


# **DISCLAIMER:**

**This unrecorded Record of Survey was donated to the City of Tucson. The City of Tucson provides this data for your personal use "as is." Additionally, the City of Tucson provides this information with the understanding that it is not guaranteed to be accurate, correct or complete and conclusions drawn from such information are the responsibility of the user.**



**NOTES**

- (1)  $\phi$  INDICATES SET 40d NAIL UNLESS NOTED
- (2) M- MEASURED
- (3) R- MAP OR DEED RECORD
- (4) THIS IS NOT A COMPLETE BOUNDARY SURVEY

**RESULTS OF SURVEY**

OF A PORTION OF LOT 4 CATALINA FOOTHILLS ESTATES N\*6 AS RECORDED IN BOOK 16 OF MAPS AND PLATS AT PAGE 36 IN THE OFFICE OF THE PIMA COUNTY RECORDER PIMA COUNTY ARIZONA



ROBERT F. MELLEN  
 REGISTERED LAND SURVEYOR  
 TUCSON, ARIZONA  
 JOB\* 92-8

Z-2017-303