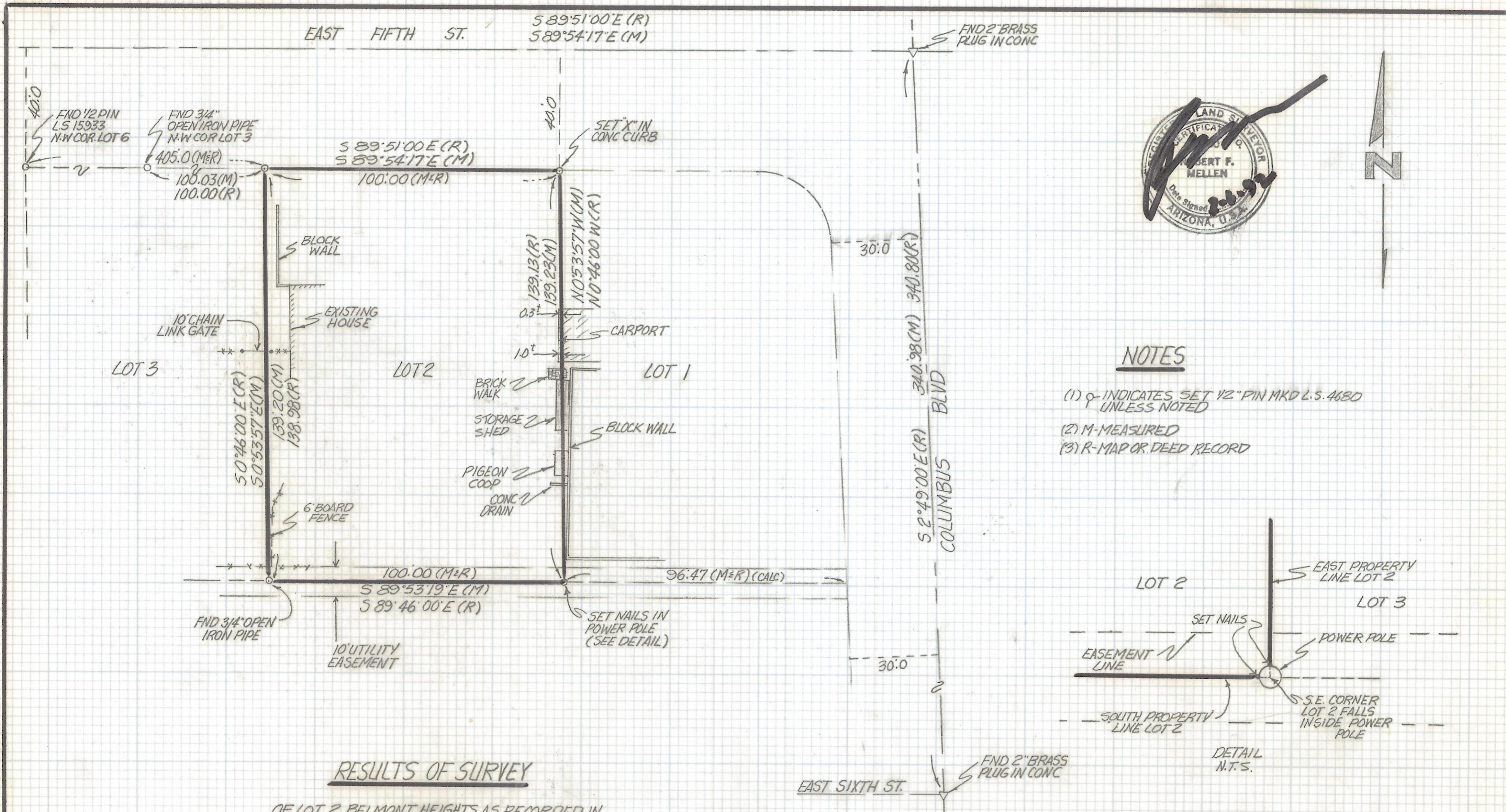


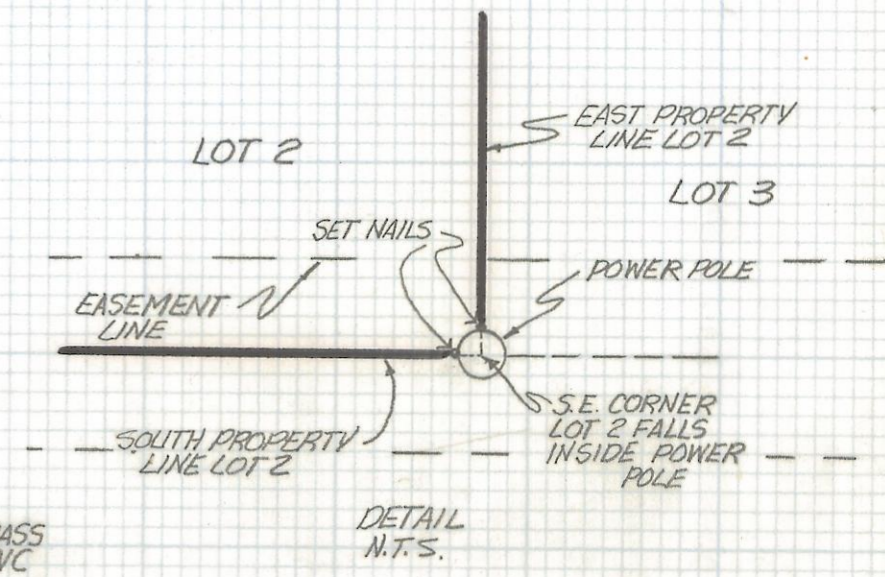
DISCLAIMER:

This unrecorded Record of Survey was donated to the City of Tucson. The City of Tucson provides this data for your personal use "as is." Additionally, the City of Tucson provides this information with the understanding that it is not guaranteed to be accurate, correct or complete and conclusions drawn from such information are the responsibility of the user.



NOTES

- (1) ♂ INDICATES SET 1/2" PIN MKD L.S. 4680 UNLESS NOTED
- (2) M-MEASURED
- (3) R-MAP OR DEED RECORD



RESULTS OF SURVEY

OF LOT 2 BELMONT HEIGHTS AS RECORDED IN BOOK 9 OF MAPS AND PLATS AT PAGE 66 IN THE OFFICE OF THE PIMA COUNTY RECORDER PIMA COUNTY, ARIZONA

EAST SIXTH ST. FND 2" BRASS PLUG IN CONC

Z-2017-307

RFM	ROBERT F. MELLEN		REVISIONS		DATE	
	REGISTERED LAND SURVEYOR		DATE: 1-30-92		30	
	1250 W. MOHAVE ST. TUCSON, ARIZONA		DR BY: EMT		CK BY: RFM	
	(602) 888-1012		SCALE: 1"=30		JOB NO. 92-13	
				SHEET 1 OF 1		