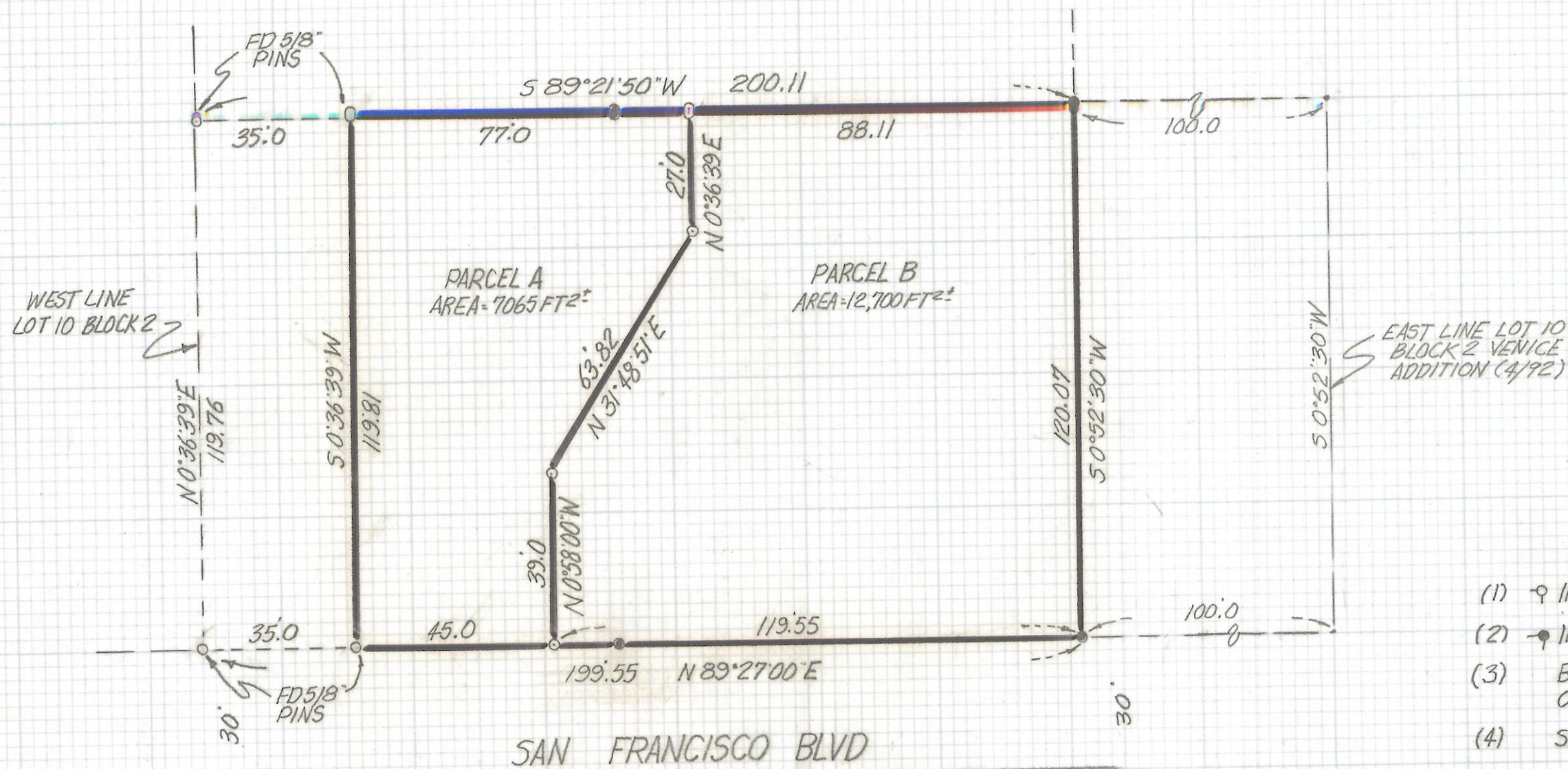


DISCLAIMER:

This unrecorded Record of Survey was donated to the City of Tucson. The City of Tucson provides this data for your personal use "as is." Additionally, the City of Tucson provides this information with the understanding that it is not guaranteed to be accurate, correct or complete and conclusions drawn from such information are the responsibility of the user.



NOTES

- (1) ♀ INDICATES SET 1/2" PIN MKD L.S. 4680 UNLESS NOTED
- (2) ♂ INDICATES FOUND 1/2" PIN L.S. 4680 SEE JOB*80-1
- (3) BASIS OF BEARINGS N89°27'00"E NORTH LINE OF VENICE ADDITION BOOK 4 PAGE 92 MAPS & PLATS
- (4) SEE JOB*80-1

RESULTS OF SURVEY

OF A PORTION OF LOT 10 BLOCK 2 OF VENICE ADDITION AS RECORDED IN BOOK 4 OF MAPS AND PLATS AT PAGE 92 IN THE OFFICE OF THE PIMA COUNTY RECORDER PIMA COUNTY ARIZONA



Z-2017-308

RFM	ROBERT F. MELLEN	REVISIONS	DATE
	REGISTERED LAND SURVEYOR		DATE: 1-5-92
	1250 W. MONAHE ST. TUCSON, ARIZONA		DR BY: EMT CK BY: RFM
	(602) 888-1012	SCALE: 1" = 30'	JOB NO. 92-14
		SHEET 1 OF 1	