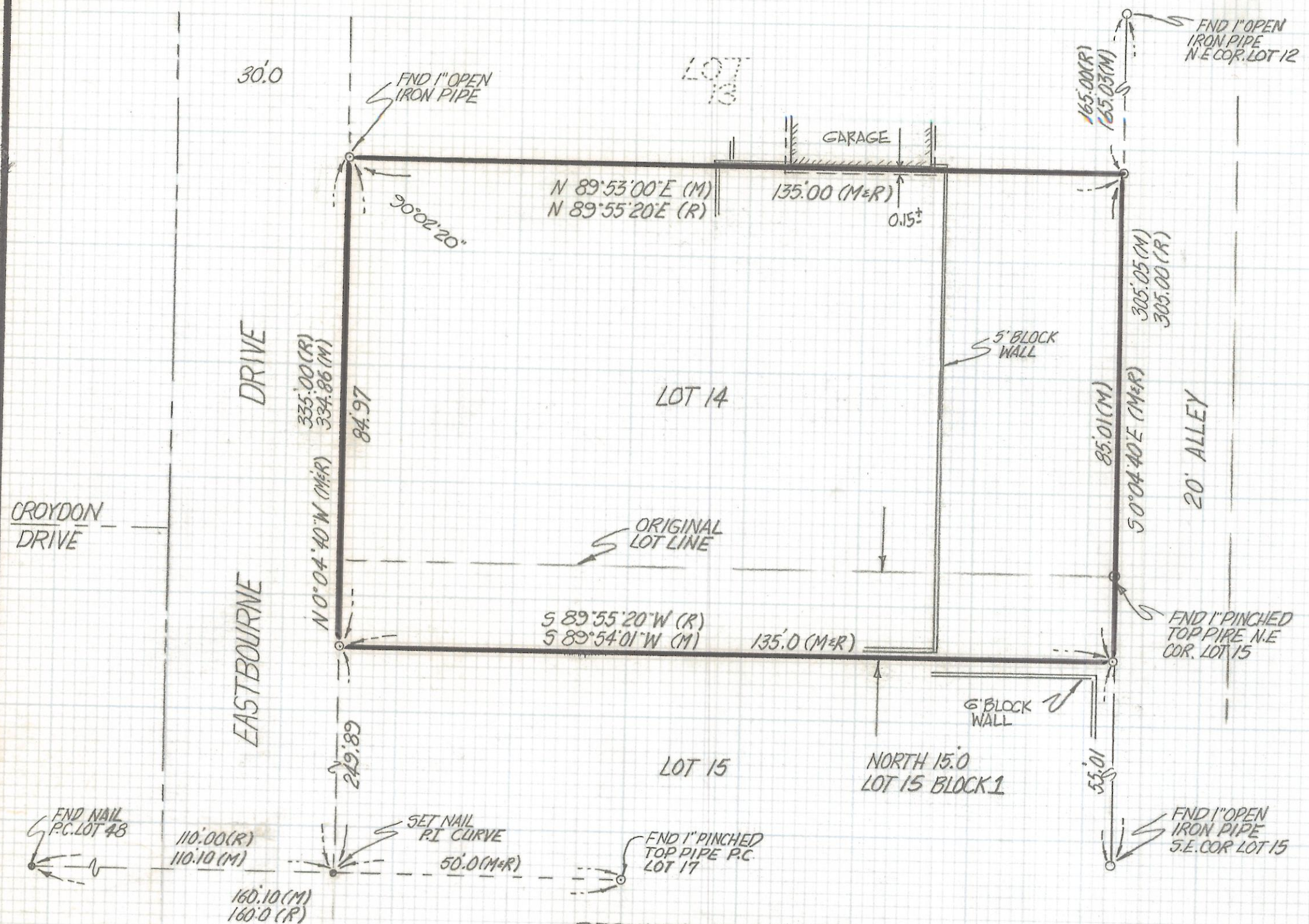


DISCLAIMER:

This unrecorded Record of Survey was donated to the City of Tucson. The City of Tucson provides this data for your personal use "as is." Additionally, the City of Tucson provides this information with the understanding that it is not guaranteed to be accurate, correct or complete and conclusions drawn from such information are the responsibility of the user.



NOTES

- (1) \circ INDICATES SET 1/2" PIN MKD L.S. 4680 UNLESS NOTED
- (2) M-MEASURED
- (3) R-MAP OR DEED RECORD
- (4) BASIS OF BEARINGS N 0° 04' 40" W WEST LINE OF BLOCK 1 BROADMOOR SUB. BOOK 7 PAGE 46 MAPS AND PLATS
- (5) SEE DOCKET 8349 PAGE 2331

RESULTS OF SURVEY

OF LOT 14 AND THE NORTH 15.0 FEET OF LOT 15 BLOCK 1 BROADMOOR SUBDIVISION RECORDED IN BOOK 7 OF MAPS AND PLATS AT PAGE 46 IN THE OFFICE OF THE PIMA COUNTY RECORDER PIMA COUNTY, ARIZONA



ROBERT F. MELLEN
 REGISTERED LAND SURVEYOR
 TUCSON, ARIZONA
 JOB# 92-23

Z-2017-314