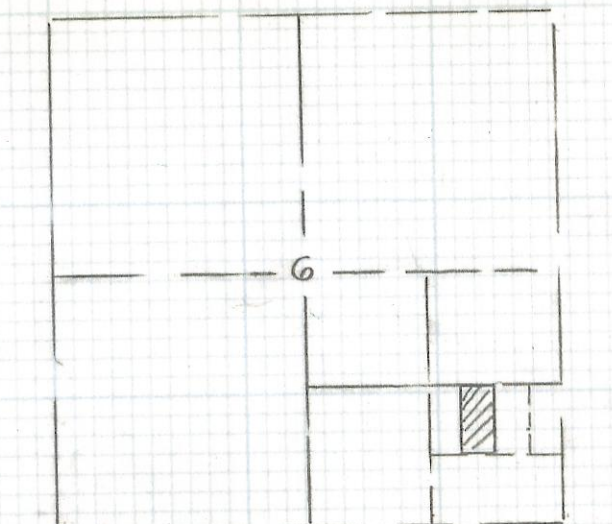
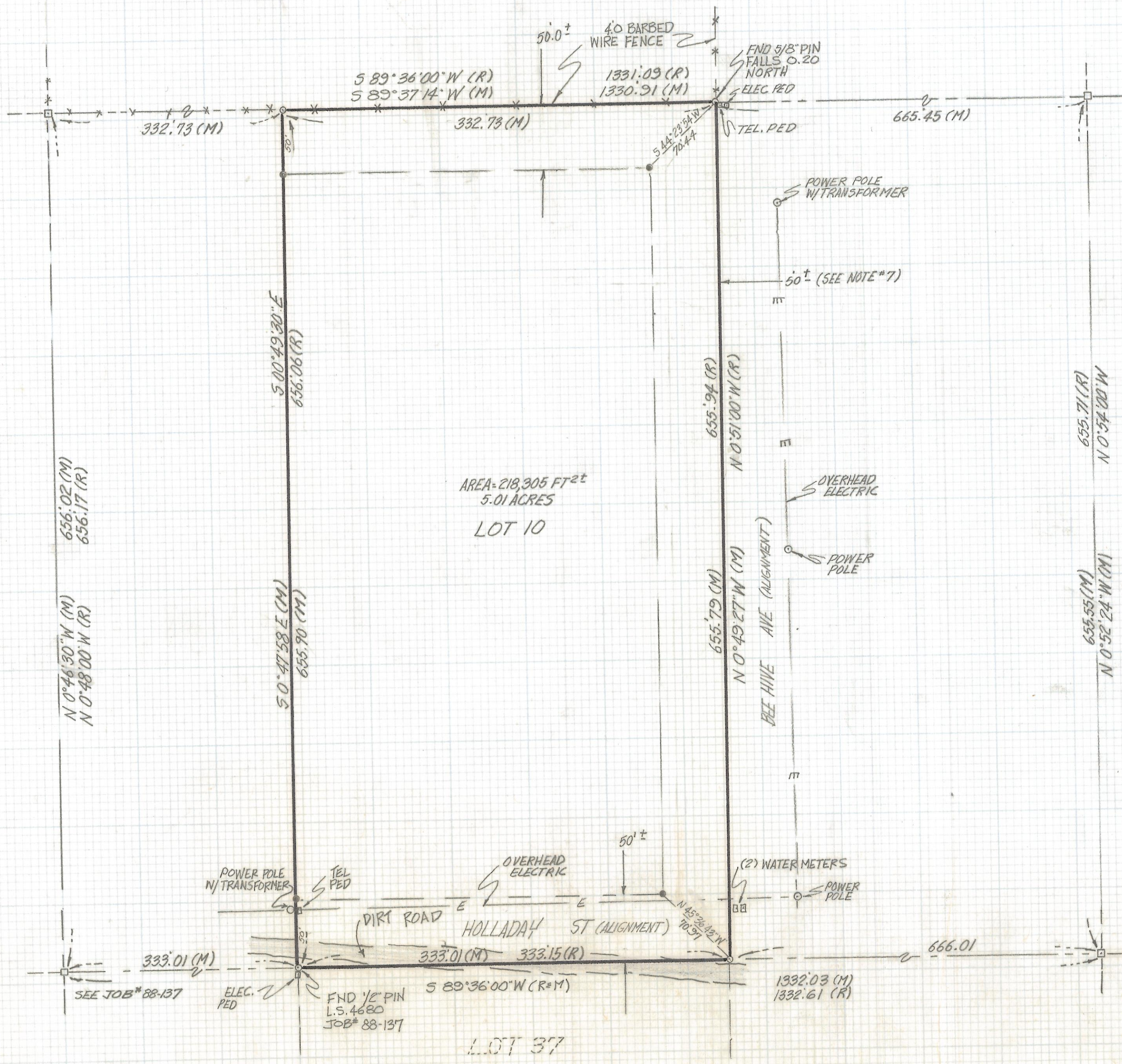


DISCLAIMER:

This unrecorded Record of Survey was donated to the City of Tucson. The City of Tucson provides this data for your personal use "as is." Additionally, the City of Tucson provides this information with the understanding that it is not guaranteed to be accurate, correct or complete and conclusions drawn from such information are the responsibility of the user.



NORTH
SCALE: 1" = 60'

- NOTES:**
- (1) ♀ INDICATES 1/2" PIN MKD LS4680 SET UNLESS NOTED
 - (2) ♂ INDICATES G.L.O. BRASS CAP FOUND UNLESS NOTED
 - (3) R G.L.O. OR DEED RECORD
 - (4) M- MEASURED
 - (5) BASIS OF BEARINGS - NORTH LINE SOUTH HALF SE 1/4 SE 1/4 SEC 6
 - (6) SEE JOB 88-137
 - (7) DOCKET BOOK 1832 PAGE 81 DATED 9-13-61 STATES SUBJECT TO A EASEMENT FOR ACCESS AND UTILITIES NOT TO EXCEED 50 FEET ON NORTH, SOUTH AND EAST BOUNDARIES
 - (8) ♀ SET PIN NO TAG NOT PROPERTY CORNER

RESULTS OF SURVEY
OF GOVERNMENT LOT 10 OF SECTION 6
TOWNSHIP 15 SOUTH OF RANGE 13 EAST
GILA AND SALT RIVER BASE AND MERIDIAN
PIMA COUNTY, ARIZONA



ROBERT F. MELLEN
REGISTERED LAND SURVEYOR
TUCSON, ARIZONA
JOB 92-35

REVISED 3-17-92 SET PINS AT SETBACK LINES

Z-2017-322