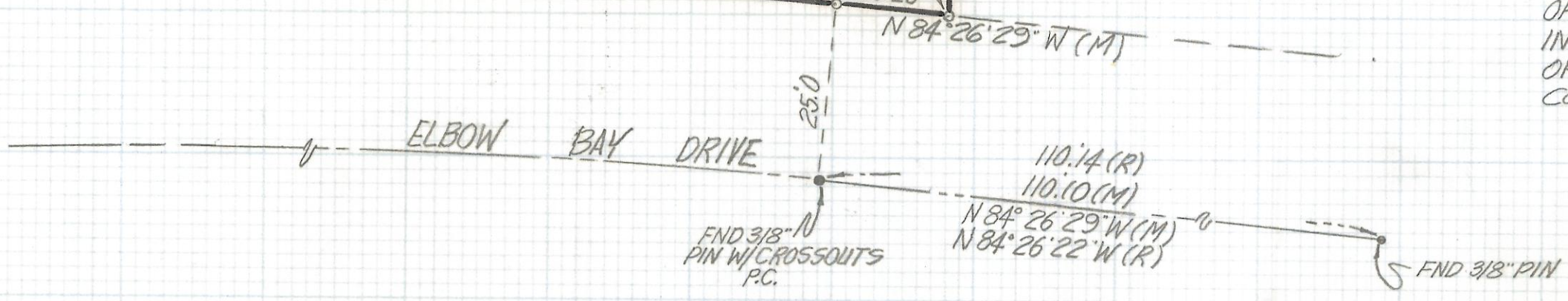
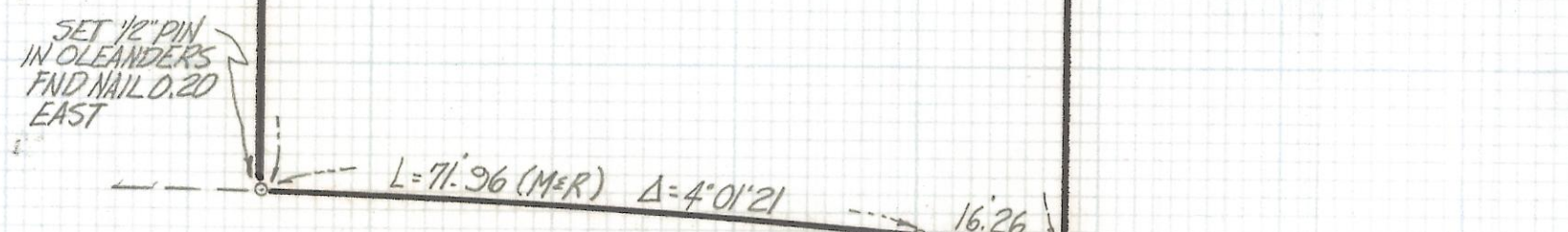
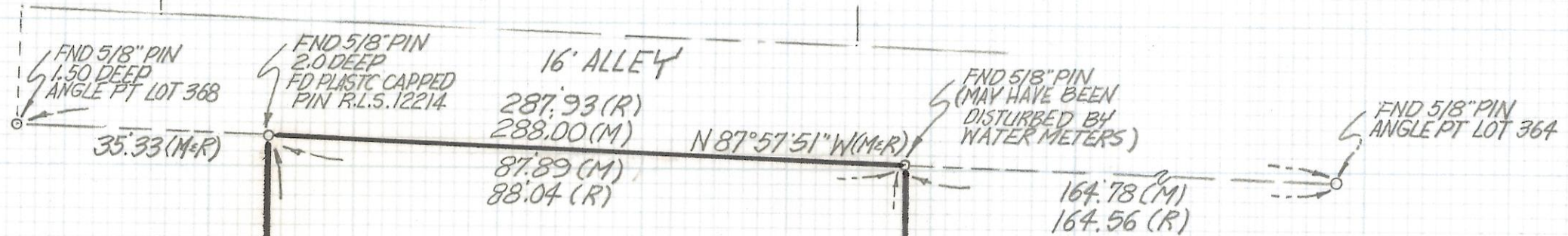
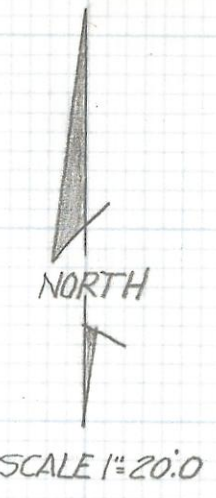


DISCLAIMER:

This unrecorded Record of Survey was donated to the City of Tucson. The City of Tucson provides this data for your personal use "as is." Additionally, the City of Tucson provides this information with the understanding that it is not guaranteed to be accurate, correct or complete and conclusions drawn from such information are the responsibility of the user.

LOT 381



NOTES

- (1) - \circ INDICATES SET 1/2" PIN MKO L.S. 4680 UNLESS NOTED
- (2) M-MEASURED
- (3) R-MAP OR DEED RECORD
- (4) BASIS OF BEARINGS N 87° 57' 51" W NORTH LINE LOT 367 KINGSTON KNOLL TERRACE BOOK 12 PAGE 71 MAPS AND PLATS

RESULTS OF SURVEY

OF LOT 367 KINGSTON KNOLLS TERRACE RECORDED IN BOOK 12 OF MAPS AND PLATS AT PAGE 71 IN THE OFFICE OF THE PIMA COUNTY RECORDER PIMA COUNTY ARIZONA



ROBERT F. MELLEN
REGISTERED LAND SURVEYOR
TUCSON, ARIZONA
JOB# 92-37

Z-2017-323