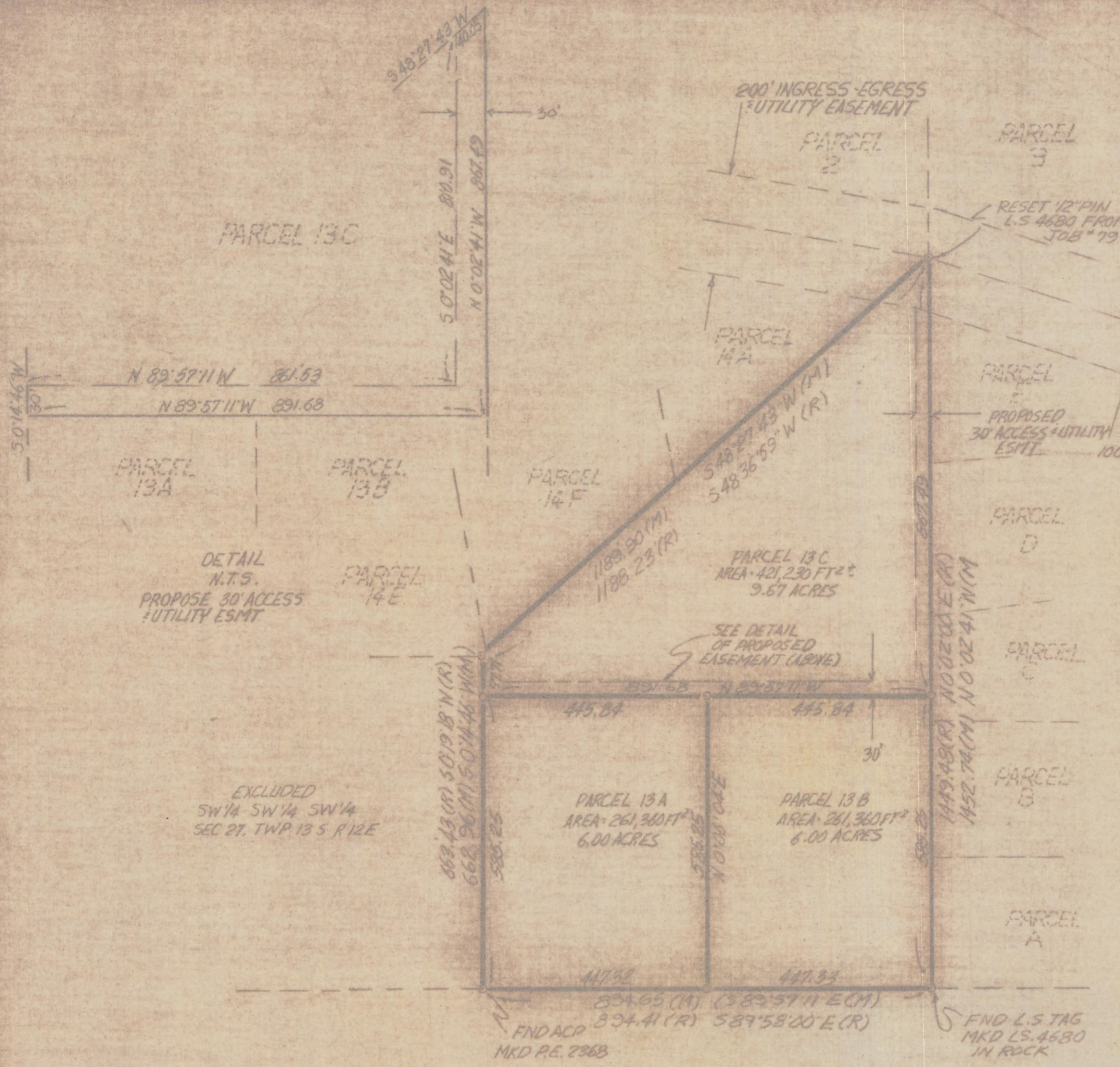


# **DISCLAIMER:**

**This unrecorded Record of Survey was donated to the City of Tucson. The City of Tucson provides this data for your personal use "as is." Additionally, the City of Tucson provides this information with the understanding that it is not guaranteed to be accurate, correct or complete and conclusions drawn from such information are the responsibility of the user.**





- NOTES**
- (1) Q INDICATES SET 1/2" PIN MKD L.S. 4680 UNLESS NOTED
  - (2) M - MEASURED
  - (3) R - MAP OR DEED RECORD
  - (4) SEE JOBS \*79-104 AND \*79-120
  - (5) RECORD MEASUREMENTS TAKEN FROM RANCHO REAL RECORDED IN DOCKET 3878 PAGE 127 DATED NOVEMBER 24, 1970
  - (6) SEE JOB \*91-71

**RESULTS OF SURVEY**

OF PARCEL 13 RANCHO REAL A PORTION OF THE SOUTH HALF OF SECTION TWENTY-SEVEN TOWNSHIP THIRTEEN SOUTH RANGE TWELVE EAST GILA AND SALT RIVER BASE AND MERIDIAN PIMA COUNTY ARIZONA

<b>RFM</b>	Z-2017-328	PARCELS 13A, B, C REVISIONS 4-1-92 DATE
	ROBERT F. MELLETT REGISTERED LAND SURVEYOR 1250 W. MOHAVE ST. TUCSON, ARIZONA (602) 888-1012	DATE: 6-4-91 DRAWN BY: EMT/CKBY/RFM JOB NO. 92-43 SCALE: 1"=200'
	SHEET 1 OF 1	