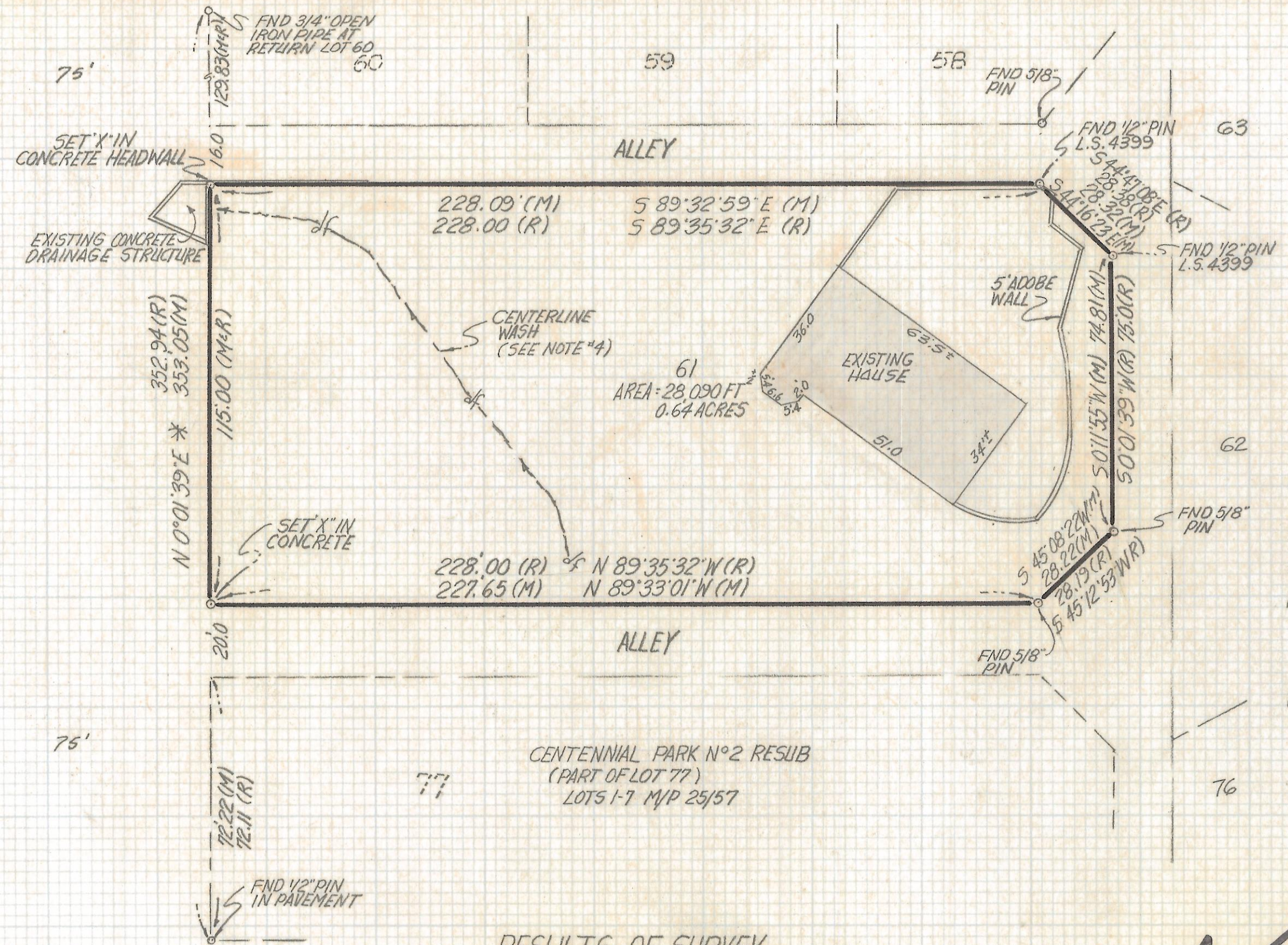


# **DISCLAIMER:**

**This unrecorded Record of Survey was donated to the City of Tucson. The City of Tucson provides this data for your personal use "as is." Additionally, the City of Tucson provides this information with the understanding that it is not guaranteed to be accurate, correct or complete and conclusions drawn from such information are the responsibility of the user.**

SECO CAMINO

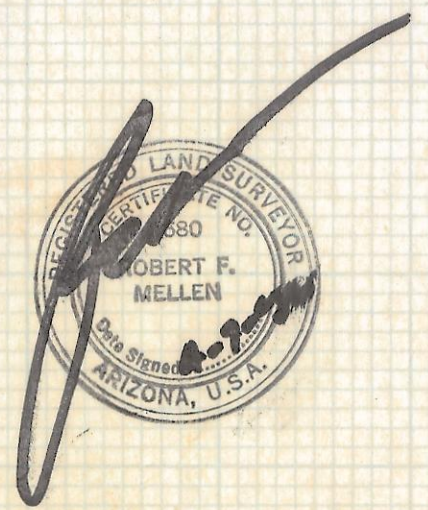


**NOTES**

- (1) - q INDICATES SET 1/2" PIN MKD L.S. 4680 UNLESS NOTED
- (2) M-MEASURED
- (3) R- MAP OR DEED RECORD
- (4) NATURAL DRAINAGE THRU LOTS 61 & 77 SHALL NOT BE ALTERED OR DISTURBED WITHOUT THE APPROVAL OF THE BOARD OF SUPERVISORS
- (5) \* BASIS OF BEARINGS N 0° 01' 39" E WEST LINE CENTENNIAL PARK BOOK 16 PAGE 31 M & P

RESULTS OF SURVEY

OF LOT 61 CENTENNIAL PARK RECORDED IN BOOK 16 OF MAPS AND PLATS AT PAGE 31 IN THE OFFICE OF THE PIMA COUNTY RECORDER PIMA COUNTY, ARIZONA



ROBERT F. MELLEN  
REGISTERED LAND SURVEYOR  
TUCSON, ARIZONA  
JOB# 92-48

Z-2017-330