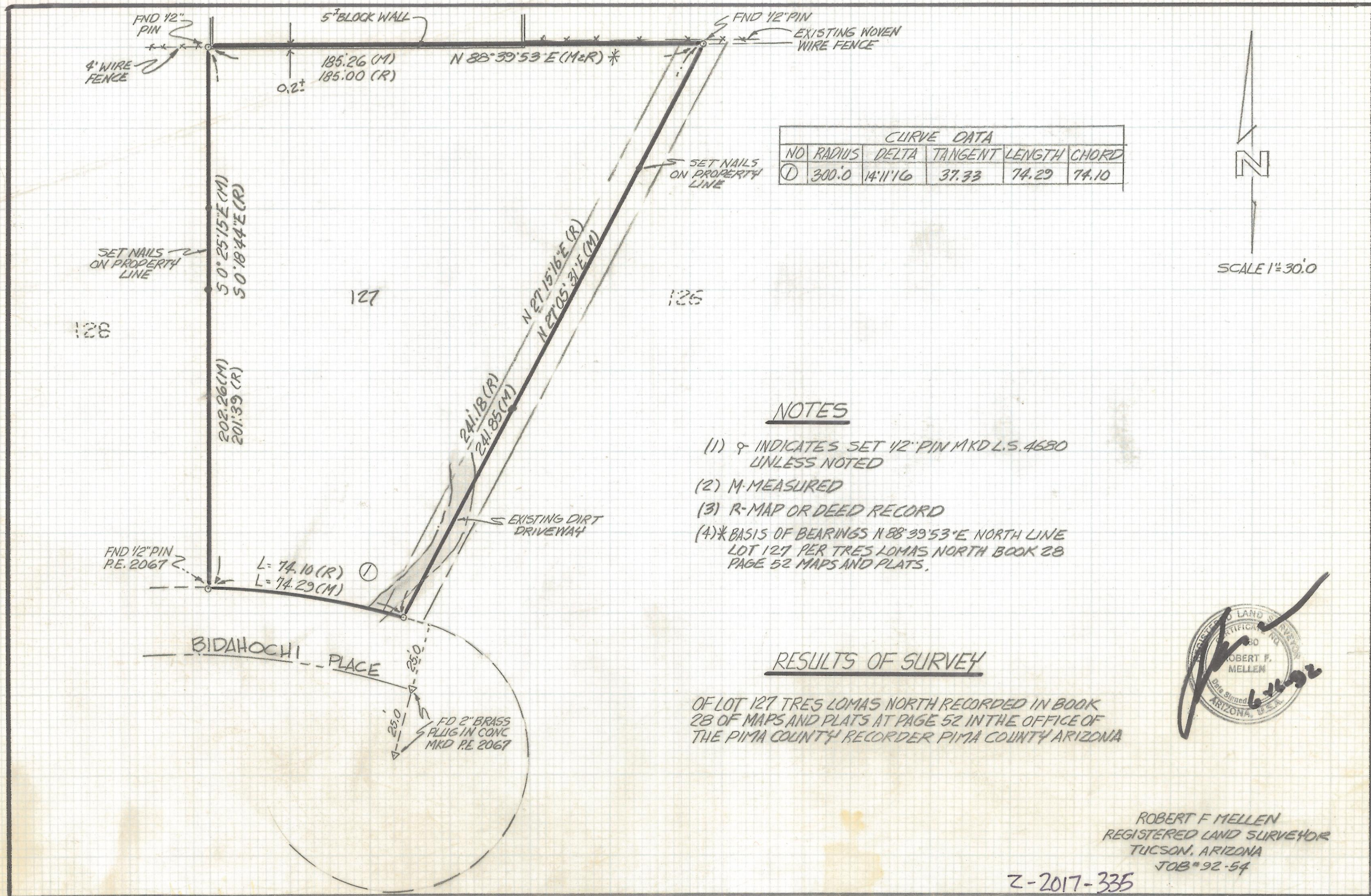


DISCLAIMER:

This unrecorded Record of Survey was donated to the City of Tucson. The City of Tucson provides this data for your personal use "as is." Additionally, the City of Tucson provides this information with the understanding that it is not guaranteed to be accurate, correct or complete and conclusions drawn from such information are the responsibility of the user.



CURVE DATA					
NO	RADIUS	DELTA	TANGENT	LENGTH	CHORD
①	300.0	14°11'16"	37.33	74.29	74.10

NOTES

- (1) ♀ INDICATES SET 1/2" PIN MKD L.S. 4680 UNLESS NOTED
- (2) M- MEASURED
- (3) R- MAP OR DEED RECORD
- (4) * BASIS OF BEARINGS N 88° 39' 53" E NORTH LINE LOT 127 PER TRES LOMAS NORTH BOOK 28 PAGE 52 MAPS AND PLATS.

RESULTS OF SURVEY

OF LOT 127 TRES LOMAS NORTH RECORDED IN BOOK 28 OF MAPS AND PLATS AT PAGE 52 IN THE OFFICE OF THE PIMA COUNTY RECORDER PIMA COUNTY ARIZONA



ROBERT F MELLEN
 REGISTERED LAND SURVEYOR
 TUCSON, ARIZONA
 JOB # 92-54

Z-2017-335