

DISCLAIMER:

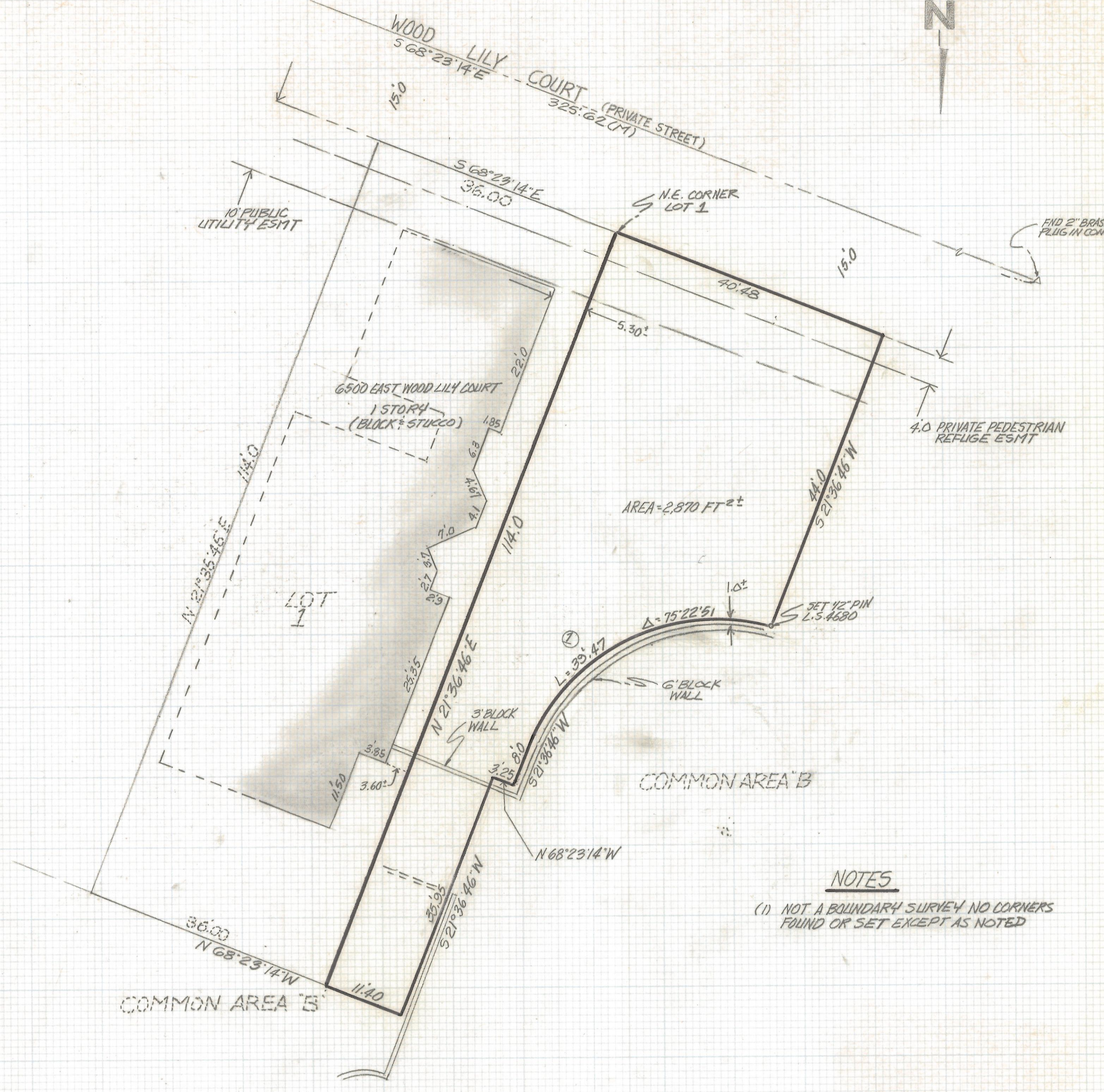
This unrecorded Record of Survey was donated to the City of Tucson. The City of Tucson provides this data for your personal use "as is." Additionally, the City of Tucson provides this information with the understanding that it is not guaranteed to be accurate, correct or complete and conclusions drawn from such information are the responsibility of the user.

CURVE DATA				
NO.	RADIUS	DELTA	TANGENT	LENGTH CHORD
①	30.0	75°22'51"	23.18	39.47 36.68



FIND 2" BRASS
PLUG IN CONC

FIND 2" BRASS
PLUG IN CONC



NOTES

(1) NOT A BOUNDARY SURVEY NO CORNERS FOUND OR SET EXCEPT AS NOTED

SKETCH OF LEGAL DESCRIPTION

OF A PORTION OF COMMON AREA "B" MESQUITE CREEK II RECORDED IN BOOK 42 OF MAPS AND PLATS AT PAGE 13 IN THE OFFICE OF THE PIMA COUNTY RECORDER PIMA COUNTY ARIZONA



RFM	Z-2017-349		REVISIONS	DATE
	ROBERT F. MELLEN		DATE: 5-28-02	
	REGISTERED LAND SURVEYOR		DR BY: ENT CREY: RFM	
	1250 W. MOHAVE ST. TUCSON, ARIZONA		JOB NO. 92-73	
(602) 888-1012		SCALE: 1" = 10'	SHEET 1 OF 1	