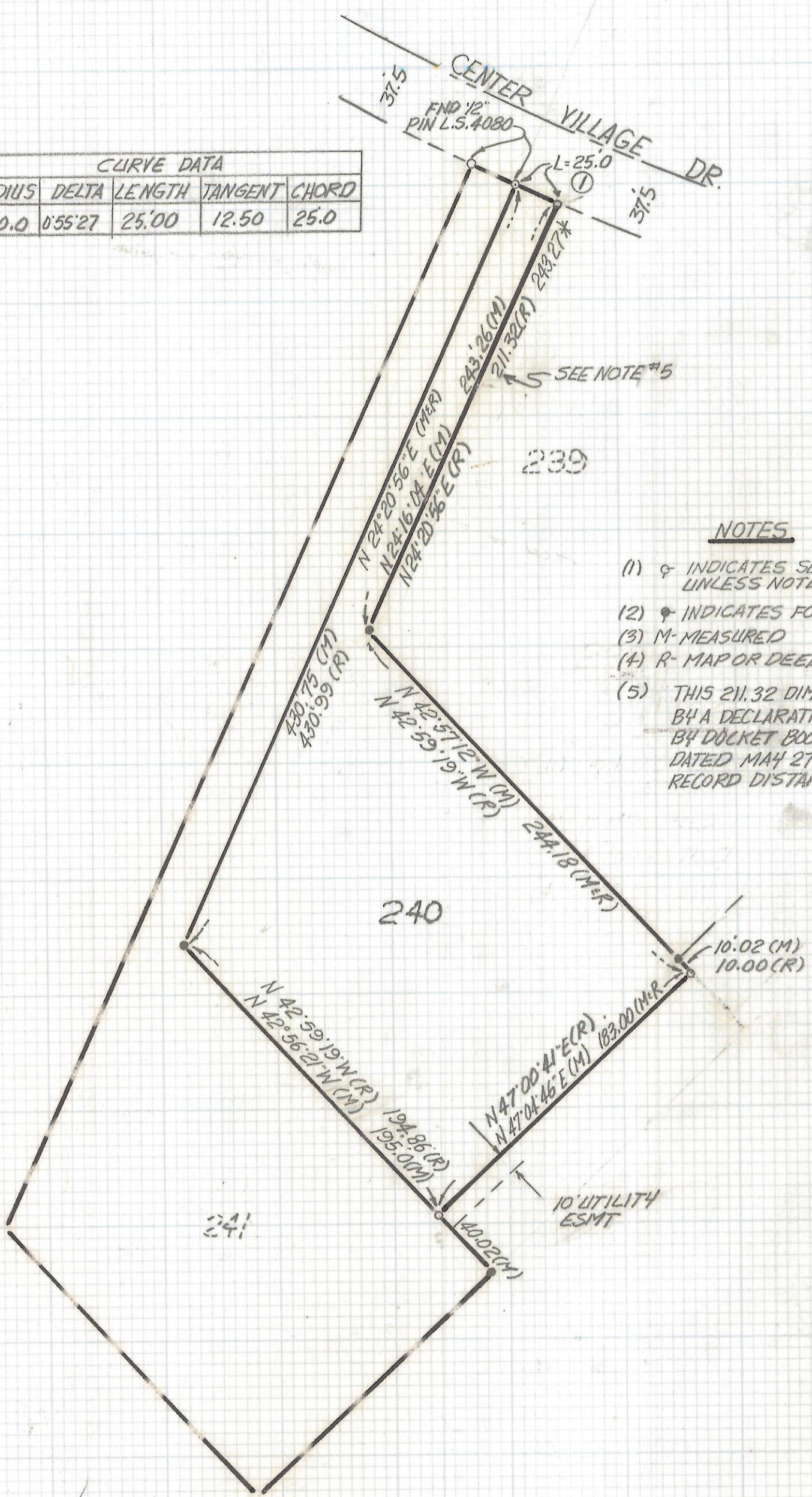
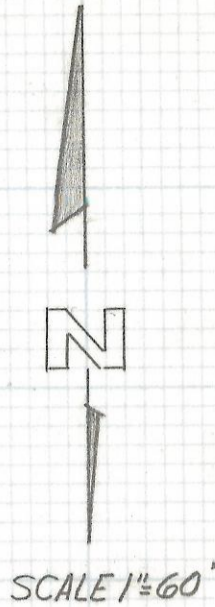


DISCLAIMER:

This unrecorded Record of Survey was donated to the City of Tucson. The City of Tucson provides this data for your personal use "as is." Additionally, the City of Tucson provides this information with the understanding that it is not guaranteed to be accurate, correct or complete and conclusions drawn from such information are the responsibility of the user.

CURVE DATA					
NO.	RADIUS	DELTA	LENGTH	TANGENT	CHORD
①	1550.0	0°55'27"	25.00	12.50	25.0



- NOTES**
- (1) ♀ INDICATES SET 1/2" PIN MKD L.S. 4680 UNLESS NOTED
 - (2) ♀ INDICATES FOUND 5/8" PIN UNLESS NOTED
 - (3) M- MEASURED
 - (4) R- MAP OR DEED RECORD
 - (5) THIS 211.32 DIMENSION WAS CORRECTED BY A DECLARATION OF SCRIVENER'S ERROR BY DOCKET BOOK 6287 AT PAGE 947 DATED MAY 27TH 1980 CHANGING THIS RECORD DISTANCE TO 243.27

RESULTS OF SURVEY

OF LOT 240 SUNRISE PRESIDIO VILLAGE AS RECORDED IN BOOK 29 OF MAPS AND PLATS AT PAGE 64 IN THE OFFICE OF THE PIMA COUNTY RECORDER PIMA COUNTY ARIZONA



ROBERT F. MELLEN
 REGISTERED LAND SURVEYOR
 TUCSON, ARIZONA
 JOB# 92-81

2-2017-355