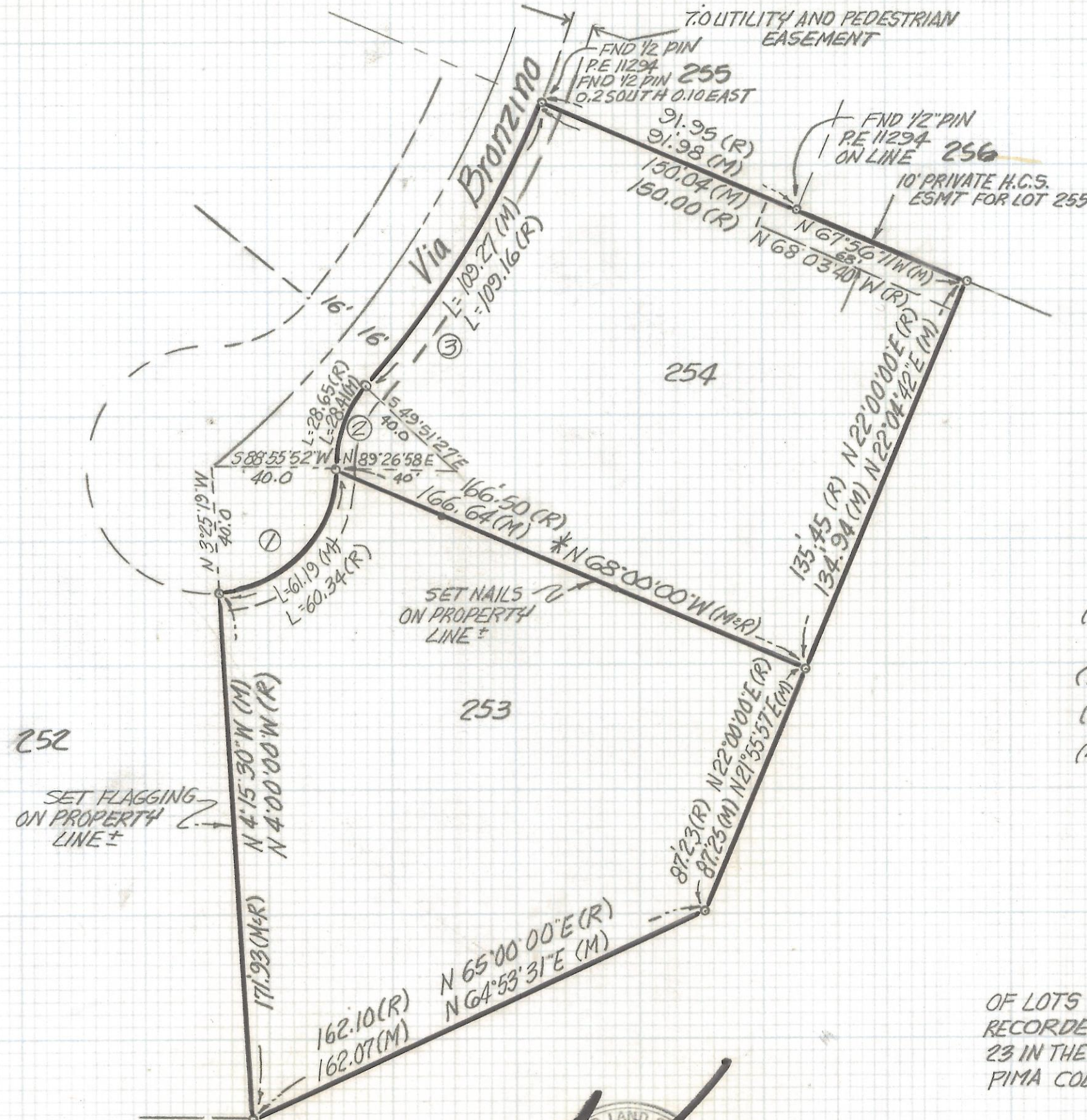


# **DISCLAIMER:**

**This unrecorded Record of Survey was donated to the City of Tucson. The City of Tucson provides this data for your personal use "as is." Additionally, the City of Tucson provides this information with the understanding that it is not guaranteed to be accurate, correct or complete and conclusions drawn from such information are the responsibility of the user.**



| CURVE DATA |        |           |         |        |        |
|------------|--------|-----------|---------|--------|--------|
| Nº         | RADIUS | DELTA     | TANGENT | LENGTH | CHORD  |
| ①          | 40.0   | 87°38'49" | 38.39   | 61.19  | 55.40  |
| ②          | 40.0   | 40°41'35" | 14.83   | 28.41  | 27.82  |
| ③          | 336.0  | 18°37'57" | 55.12   | 109.27 | 108.79 |



NOTES

- (1) - INDICATES FOUND 1/2" STEEL PIN MKD P.E. 11294 UNLESS NOTED
- (2) M-MEASURED
- (3) R-MAP OR DEED RECORD
- (4) \* BASIS OF BEARING N 68°00'00"W LOT LINE COMMON TO LOTS 253 AND 254 PER BOOK 35 AT PAGE 23 OF MAPS AND PLATS

RESULTS OF SURVEY

OF LOTS 253 AND 254 FAIRFIELD SUNRISE EAST AS RECORDED IN BOOK 35 OF MAPS AND PLATS AT PAGE 23 IN THE OFFICE OF THE PIMA COUNTY RECORDER PIMA COUNTY, ARIZONA



|                |                                    |               |                      |      |
|----------------|------------------------------------|---------------|----------------------|------|
| <b>RFM</b>     | Z-2017-356                         |               | REVISIONS            | DATE |
|                | ROBERT F. MELLEN                   |               | DATE: 6-17-92        |      |
|                | REGISTERED LAND SURVEYOR           |               | DR BY: EMT CKBY: RFM |      |
|                | 1250 W. MOHAVE ST. TUCSON, ARIZONA |               | JOB NO. 92-82        |      |
| (602) 888-1012 |                                    | SCALE: 1"=40' | SHEET 1 OF 1         |      |