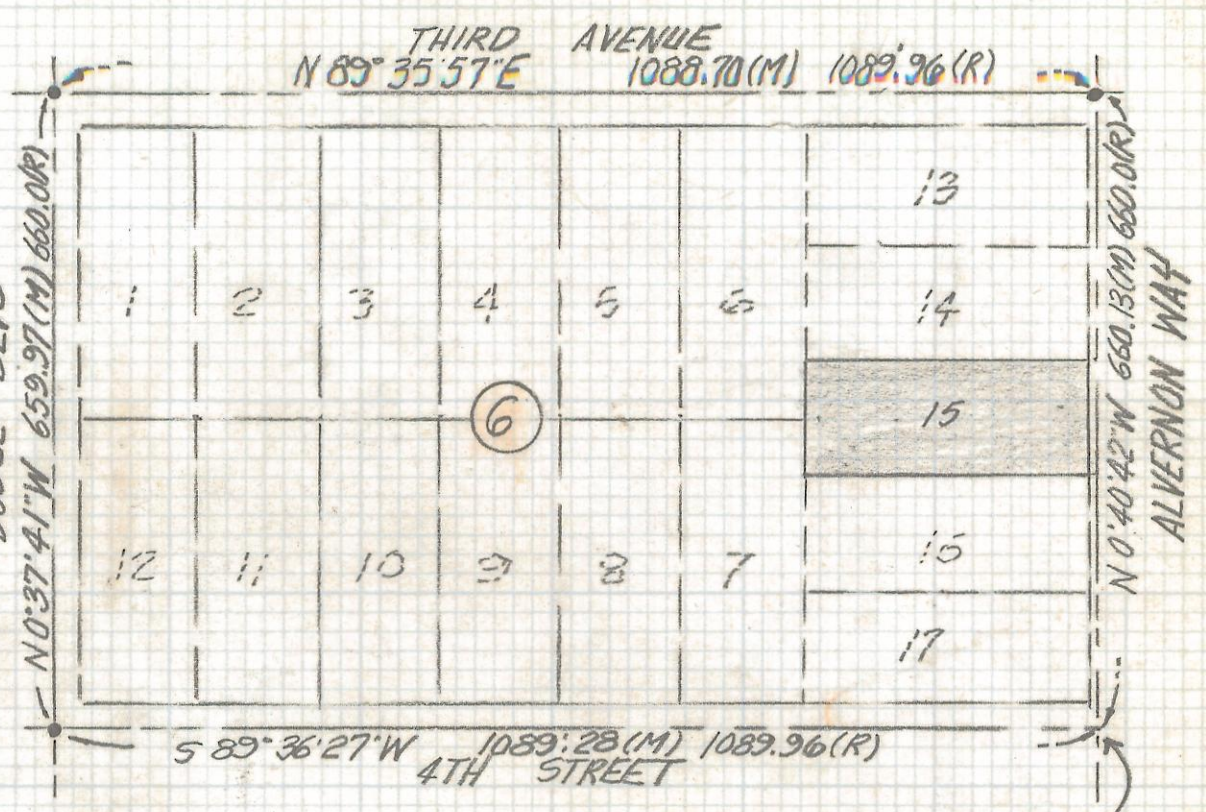
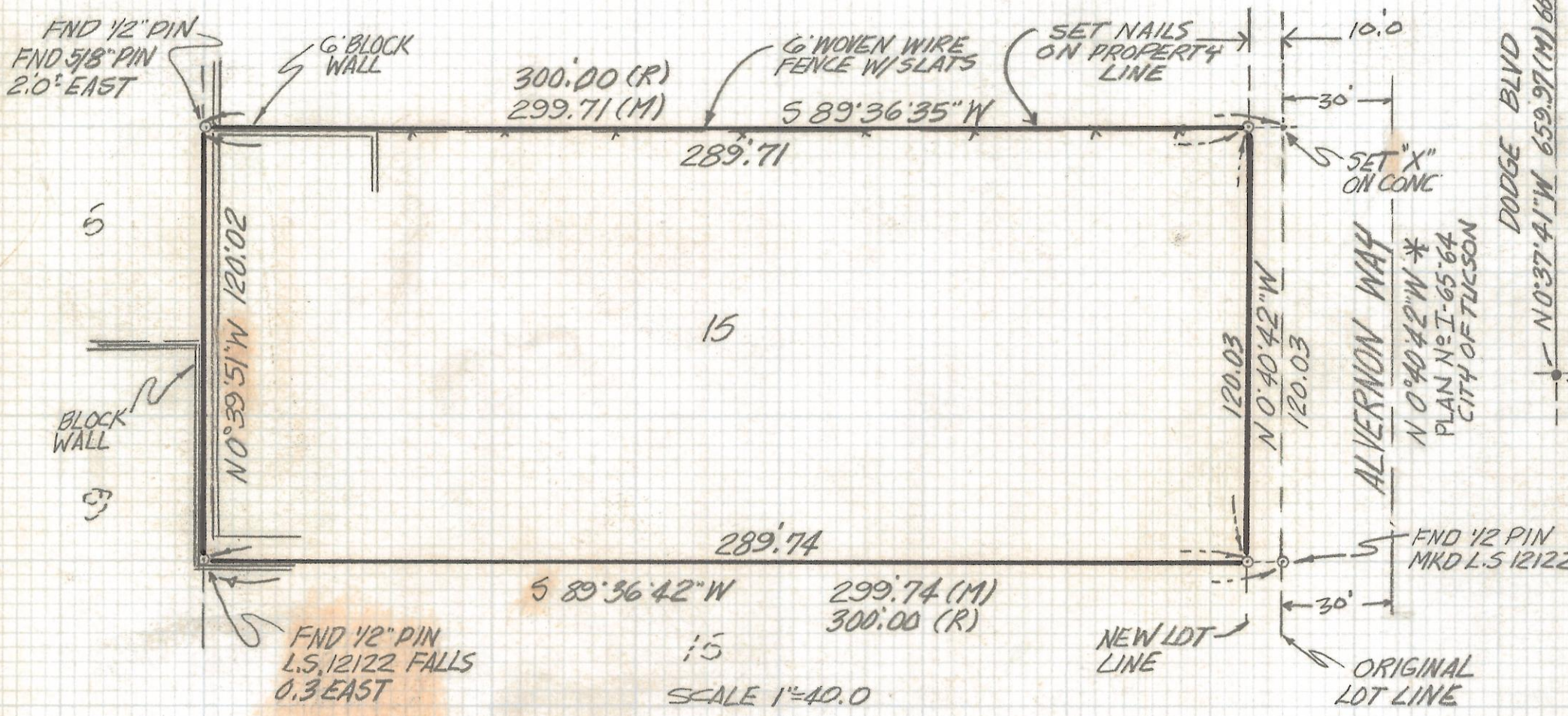


# **DISCLAIMER:**

**This unrecorded Record of Survey was donated to the City of Tucson. The City of Tucson provides this data for your personal use "as is." Additionally, the City of Tucson provides this information with the understanding that it is not guaranteed to be accurate, correct or complete and conclusions drawn from such information are the responsibility of the user.**



**LOCATION PLAN**

BLOCK 6 SPEEDWAY VIEW  
 BOOK 3 PAGE 107  
 MAPS AND PLATS  
 SCALE 1" = 200'

NOT FOUND  
 AS OF 6-23-92

**RESULTS OF SURVEY**

OF A PORTION OF LOT 15 BLOCK 6 SPEEDWAY VIEW RECORDED IN BOOK 3 OF MAPS AND PLATS AT PAGE 107 IN THE OFFICE OF THE PIMA COUNTY RECORDER PIMA COUNTY ARIZONA



**NOTES**

- (1) ♀ INDICATES SET 1/2" PIN MKD L.S. 4680 UNLESS NOTED
- (2) R- MAP OR DEED RECORD
- (3) M- MEASURED
- (4) † INDICATES FOUND PIN IN HANDHOLE 5.0 NORTH OF CENTERLINE AT ALL BLOCK INTERSECTIONS UNLESS NOTED
- (5) SEE ANDERSON ENGINEERING JOB #1530 DATED DECEMBER 6, 1965

ROBERT F. MELLEN  
 REGISTERED LAND SURVEYOR  
 TUCSON, ARIZONA  
 JOB # 92-86

2-2017-359