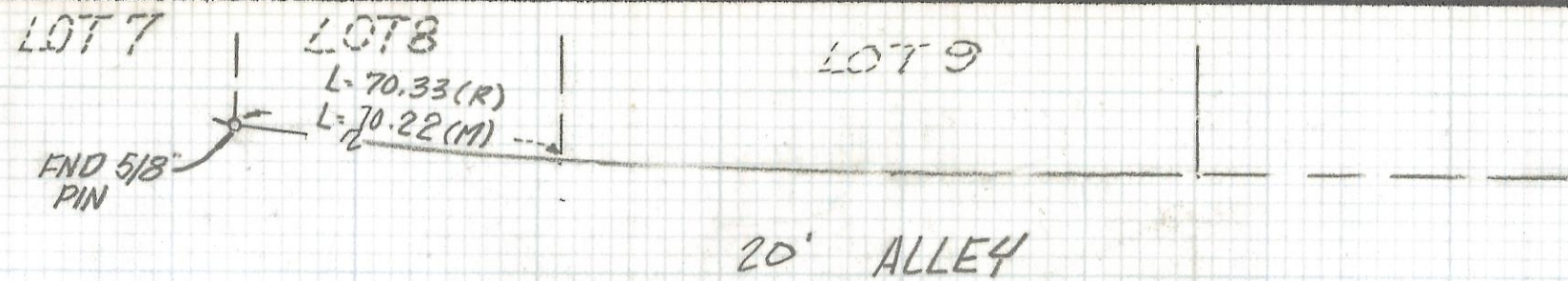
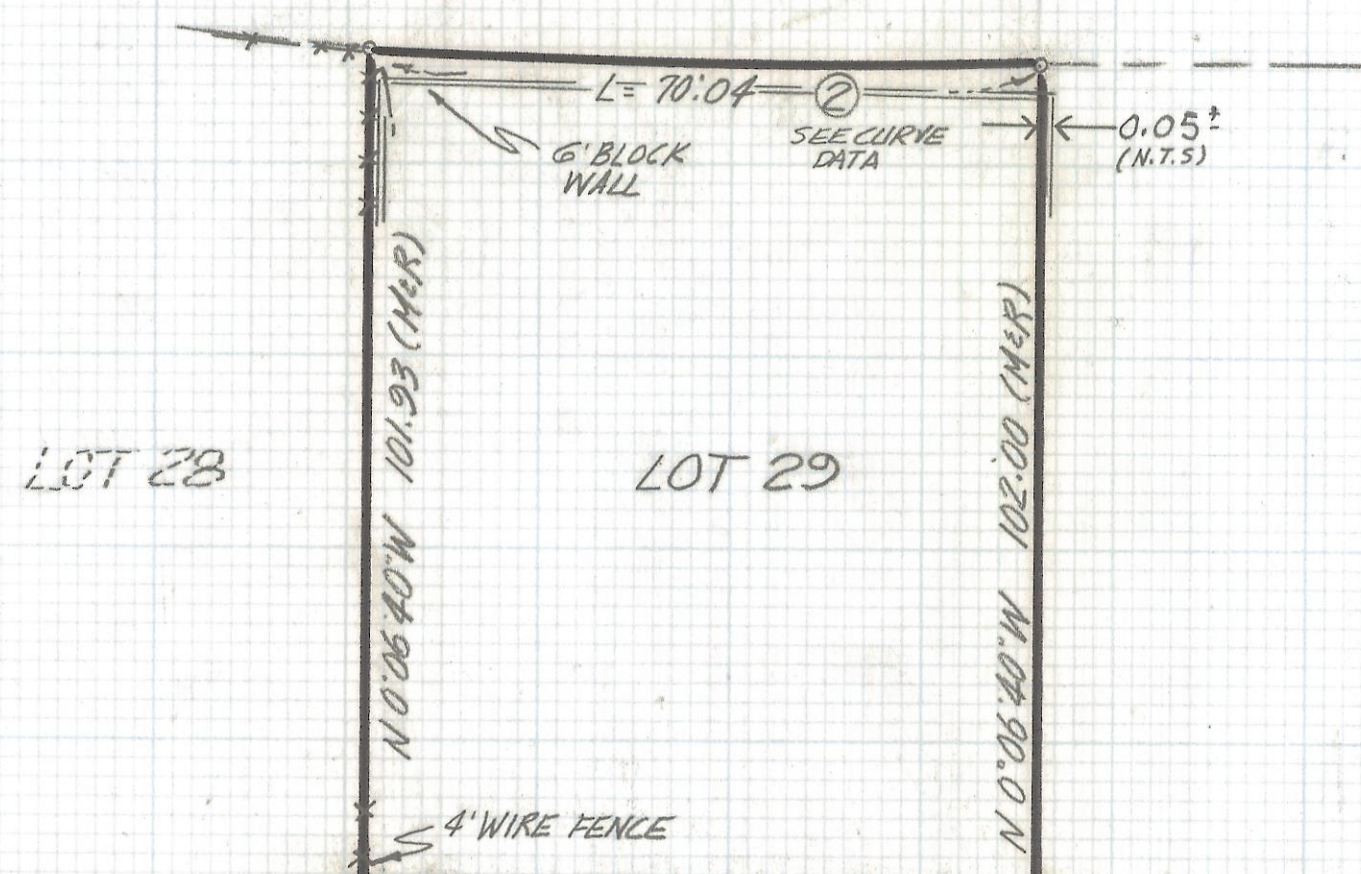


DISCLAIMER:

This unrecorded Record of Survey was donated to the City of Tucson. The City of Tucson provides this data for your personal use "as is." Additionally, the City of Tucson provides this information with the understanding that it is not guaranteed to be accurate, correct or complete and conclusions drawn from such information are the responsibility of the user.

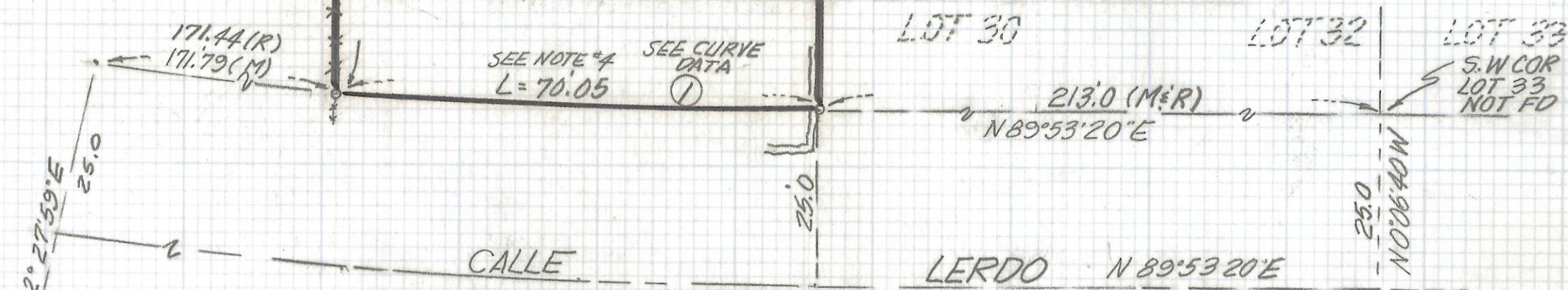


| CURVE DATA | | | | | |
|------------|---------|----------|---------|--------|-------|
| No | RADIUS | DELTA | TANGENT | LENGTH | CHORD |
| 1 | 1100.07 | 3°38'54" | 35.04 | 70.05 | 70.04 |
| 2 | 1135.07 | 3°32'08" | 35.03 | 70.04 | 70.03 |



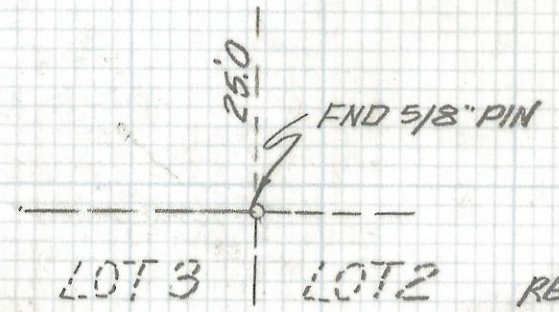
NOTES

- (1) INDICATES SET 1/2" PIN MKD L.S. 4680 UNLESS NOTED
- (2) M - MEASURED
- (3) R - MAP OR DEED RECORD
- (4) WE BELIEVE THE DIMENSION ON THE SOUTH LINE OF LOT 29 BLOCK 2 AS SHOWN ON MISSION MANOR PLAT BOOK 9 PAGE 84 IS A TYPOGRAPHICAL ERROR
- (5) N.T.S. NOT TO SCALE



RESULTS OF SURVEY

OF LOT 29 OF BLOCK 2 MISSION MANOR RECORDED IN BOOK 9 OF MAPS AND PLATS AT PAGE 84 IN THE OFFICE OF THE PIMA COUNTY RECORDER PIMA COUNTY ARIZONA



ROBERT F. MELLEN
REGISTERED LAND SURVEYOR
TUCSON, ARIZONA
JOB# 92-87

Z-2017-360