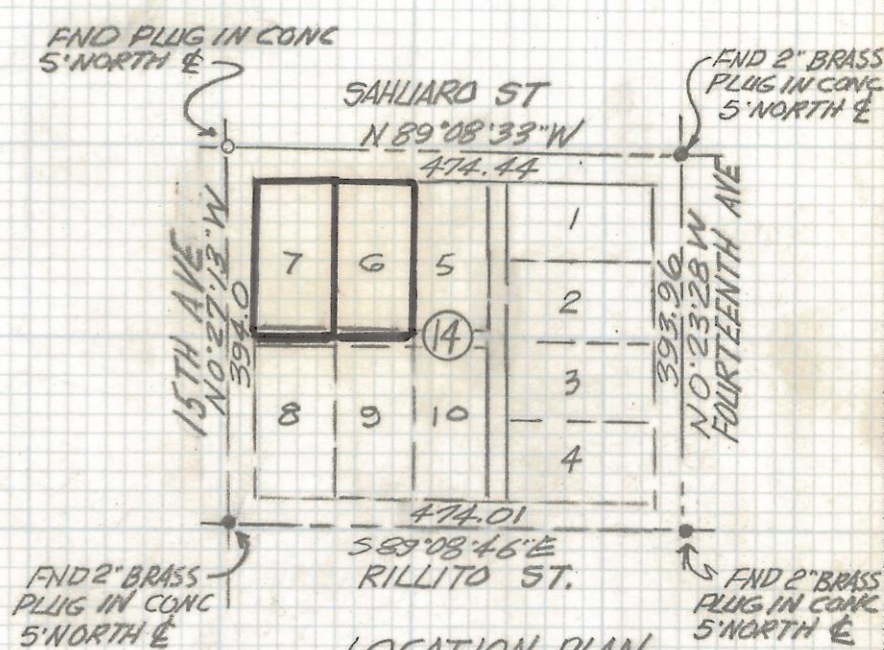
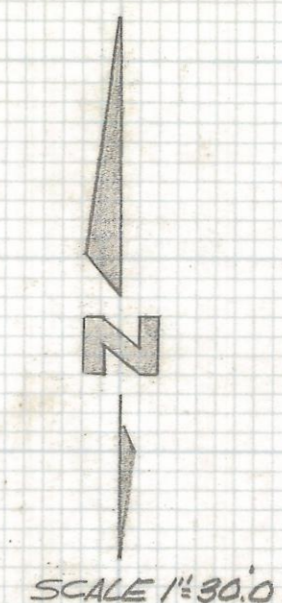
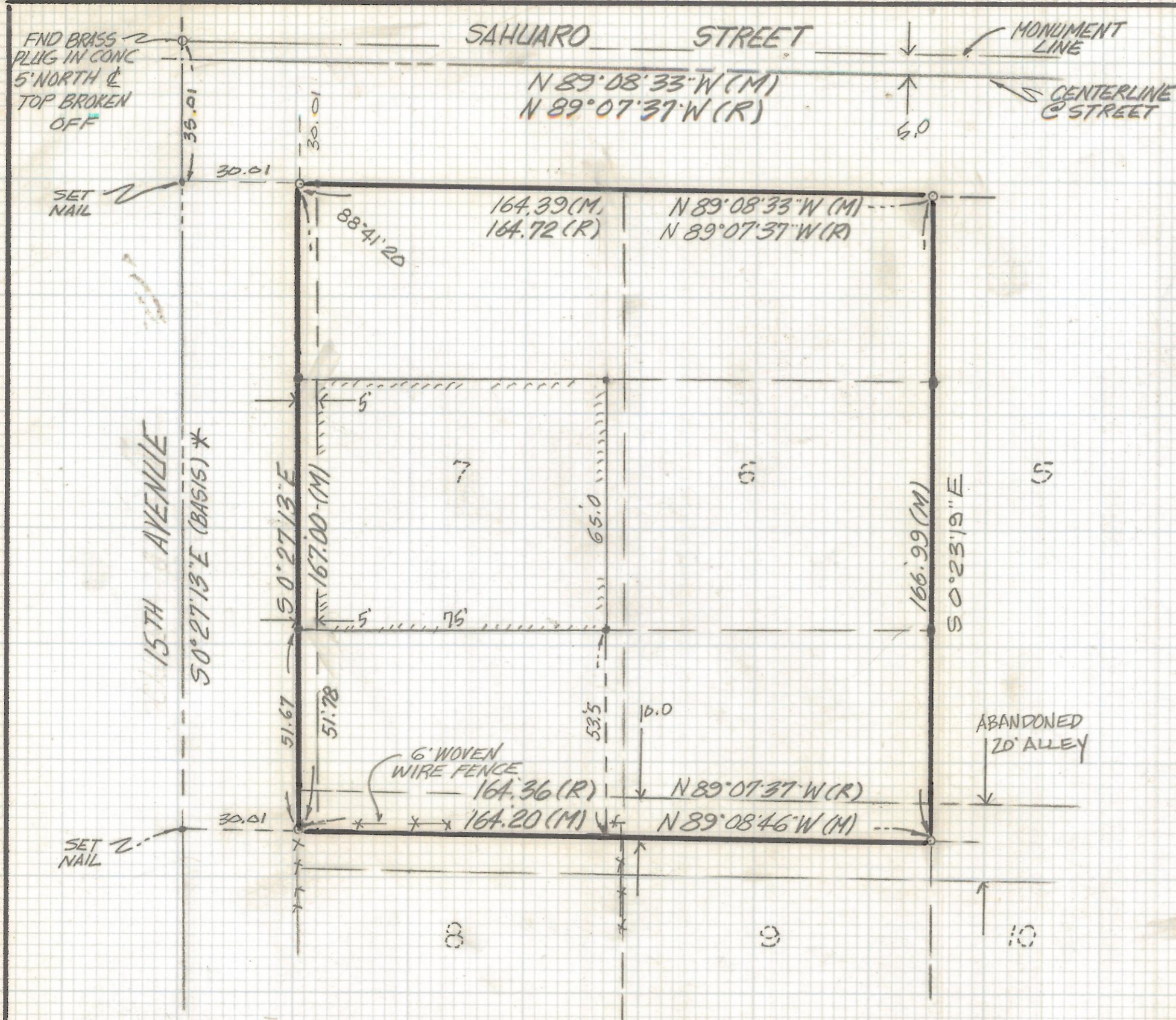


DISCLAIMER:

This unrecorded Record of Survey was donated to the City of Tucson. The City of Tucson provides this data for your personal use "as is." Additionally, the City of Tucson provides this information with the understanding that it is not guaranteed to be accurate, correct or complete and conclusions drawn from such information are the responsibility of the user.



LOCATION PLAN
BLOCK 14 EL SAHUARO ADD.
BOOK 6 PAGE 74
MAPS & PLATS
SCALE 1"=200'

NOTES

- (1) ♀ INDICATES SET 1/2" PIN MKD L.S. 4680 UNLESS NOTED
- (2) (M) - MEASURED
- (3) (R) - MAP OR DEED RECORD
- (4) * BASIS OF BEARINGS 50°27'13"E CENTERLINE 15TH AVE PER EL SAHUARO ADDITION PER BOOK 6 PAGE 74 MAP
- (5) ♀ INDICATES SET NAIL

RESULTS OF SURVEY

OF LOTS 6 AND 7 AND THE NORTH 10 FEET OF THE ABANDONED EAST WEST ALLEY AS SHOWN IN BLOCK 14 OF EL SAHUARO ADDITION RECORDED IN BOOK 6 OF MAPS AND PLATS AT PAGE 74 IN THE OFFICE OF THE PIMA COUNTY RECORDER PIMA COUNTY ARIZONA



ROBERT F. MELLEN
REGISTERED LAND SURVEYOR
TUCSON, ARIZONA
JOB # 92-112

Z-2017-374