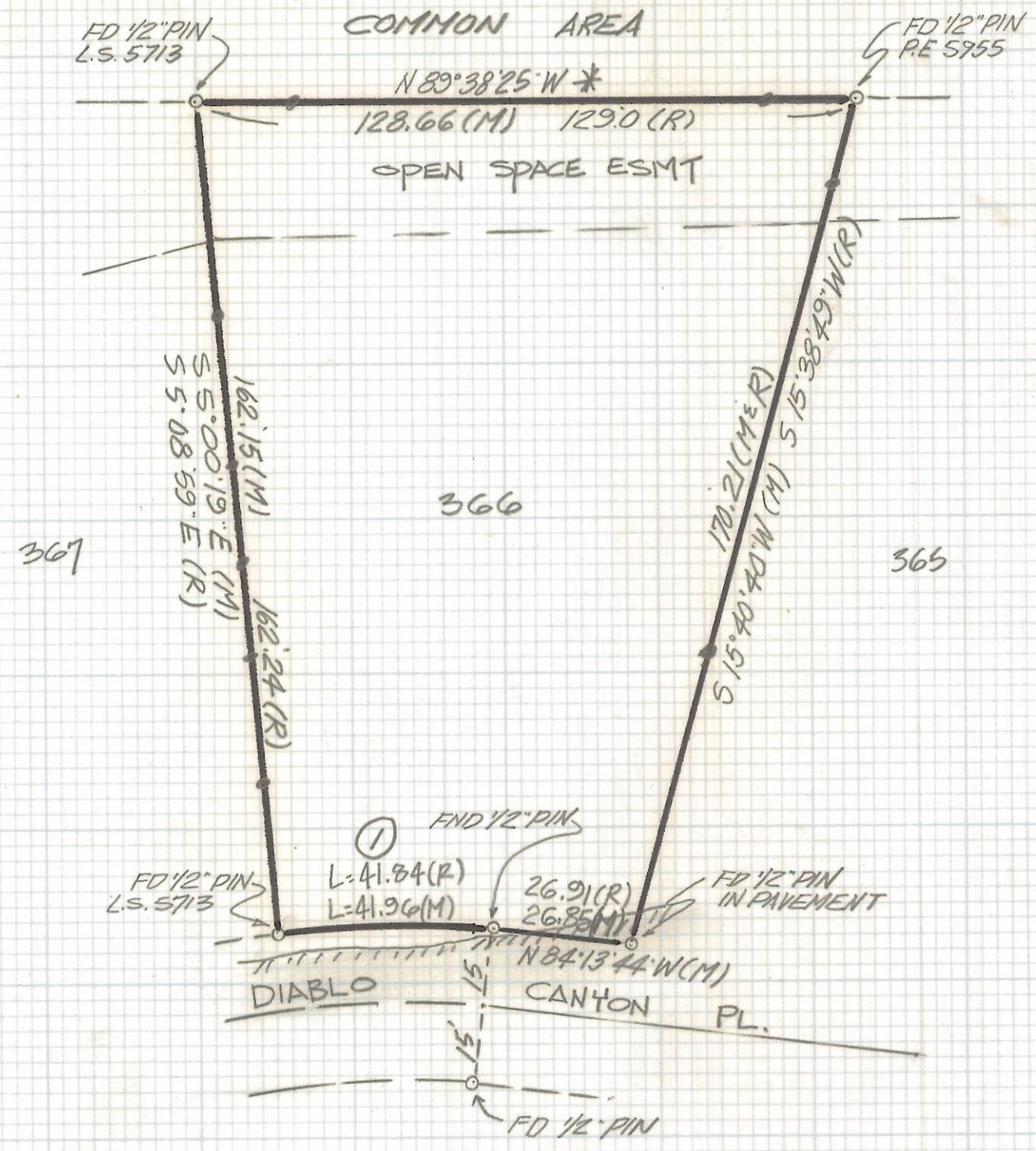


# **DISCLAIMER:**

**This unrecorded Record of Survey was donated to the City of Tucson. The City of Tucson provides this data for your personal use "as is." Additionally, the City of Tucson provides this information with the understanding that it is not guaranteed to be accurate, correct or complete and conclusions drawn from such information are the responsibility of the user.**



CURVE DATA					
N°	RADIUS	DELTA	TANGENT	LENGTH	CHORD
1	215.0	11° 10' 56"	21.05	41.96	41.89



NOTES

- (1) ⚡ INDICATES SET NAIL OR STEEL PIN ON PROPERTY LINE LOCATION APPROXIMATE
- (2) M - MEASURED
- (3) R - MAP OR DEED RECORD
- (4) \* BASIS OF BEARINGS N 89° 38' 25" W NORTH LINE LOT 366 OF THE FOOTHILL CLUSTERS BOOK 27 PAGE 15 MAPS AND PLATS

RESULTS OF SURVEY

OF LOT 366 THE FOOTHILLS CLUSTERS AS RECORDED IN BOOK 27 OF MAPS AND PLATS AT PAGE 15 IN THE OFFICE OF THE PIMA COUNTY RECORDER PIMA COUNTY ARIZONA



Z-2017-375		REVISIONS	DATE
ROBERT F. MELLEN			DATE: 8-13-92
REGISTERED LAND SURVEYOR		DR BY: ENT	CK BY: RFM
1250 W. MOHAVE ST. TUCSON, ARIZONA		JOB NO. 92-113	
(602) 888-1012	SCALE: 1" = 30'	SHEET 1 OF 1	