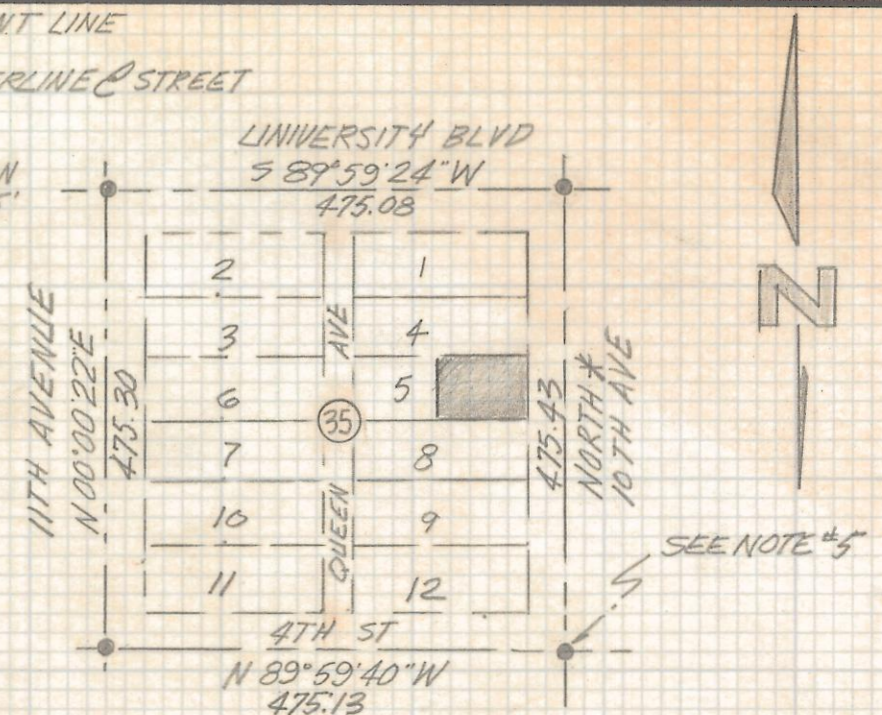
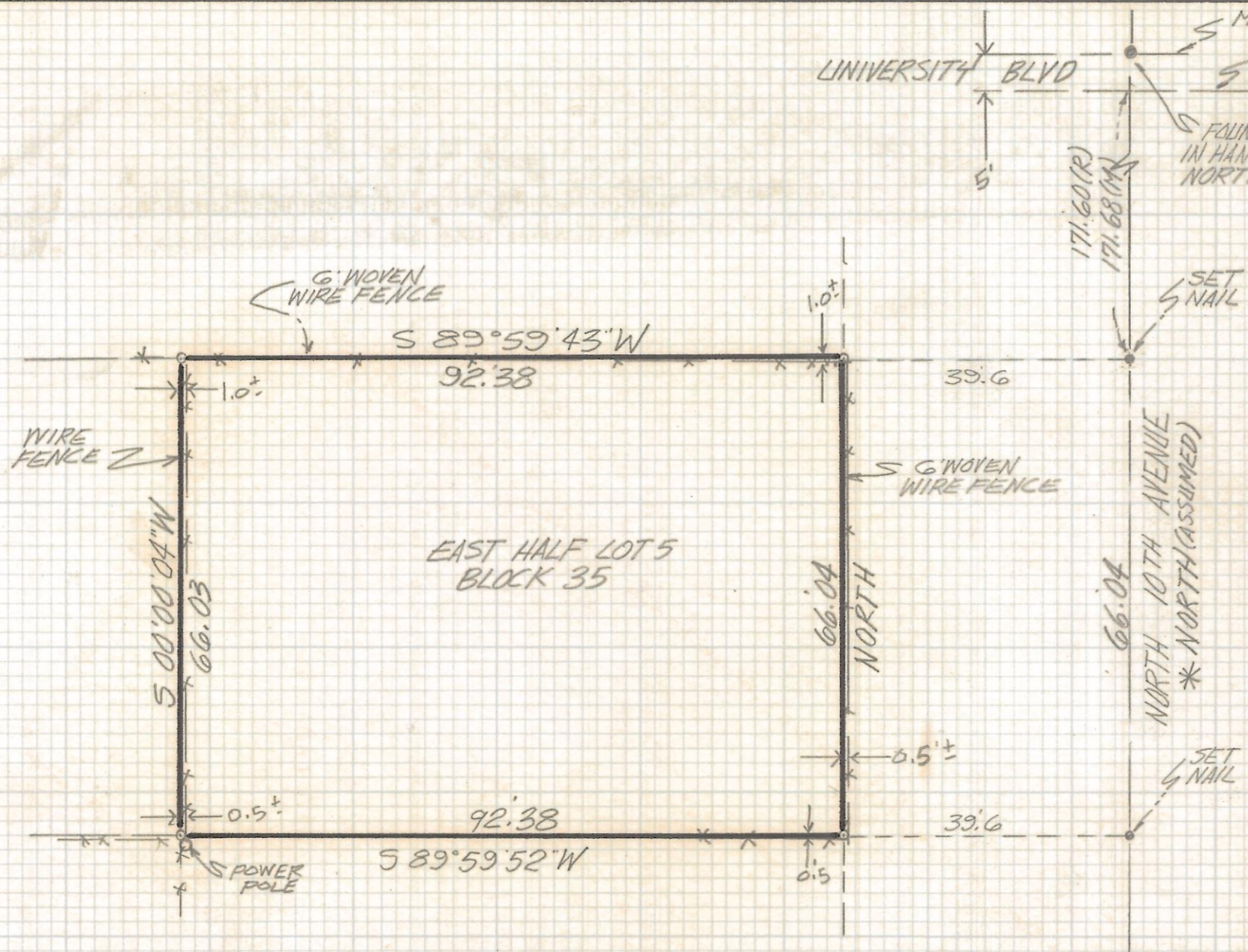


DISCLAIMER:

This unrecorded Record of Survey was donated to the City of Tucson. The City of Tucson provides this data for your personal use "as is." Additionally, the City of Tucson provides this information with the understanding that it is not guaranteed to be accurate, correct or complete and conclusions drawn from such information are the responsibility of the user.



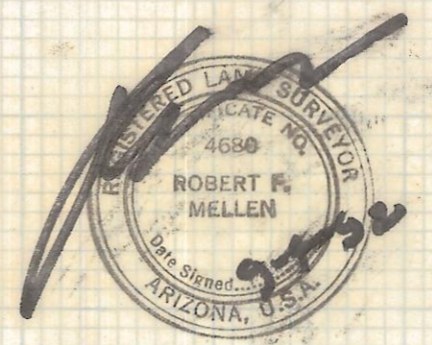
LOCATION MAP
 BLOCK 35 CITY OF TUCSON
 BOOK 3 PAGE 70 MAPS
 AND PLATS
 SCALE 1"=200'

RESULTS OF SURVEY

OF THE EAST HALF OF LOT 5 BLOCK 35 CITY OF TUCSON
 RECORDED IN BOOK 3 OF MAPS AND PLATS AT PAGE 70
 IN THE OFFICE OF THE PIMA COUNTY RECORDER PIMA
 COUNTY, ARIZONA

NOTES

- (1) ♀ INDICATES SET 1/2" PIN MKD L.S. 4680 UNLESS NOTED
- (2) M - MEASURED
- (3) R - MAP OR DEED RECORD
- (4) * BASIS OF BEARINGS NORTH ASSUMED CENTERLINE NORTH 10TH AVENUE CITY OF TUCSON BOOK 3 PAGE 70 MAPS AND PLATS
- (5) ⚬ INDICATES FOUND 3/8" PIN IN HANDHOLE 5' NORTH OF CENTERLINE



ROBERT F. MELLEN
 REGISTERED LAND SURVEYOR
 TUCSON, ARIZONA
 JOB#92-120

Z-2017-379