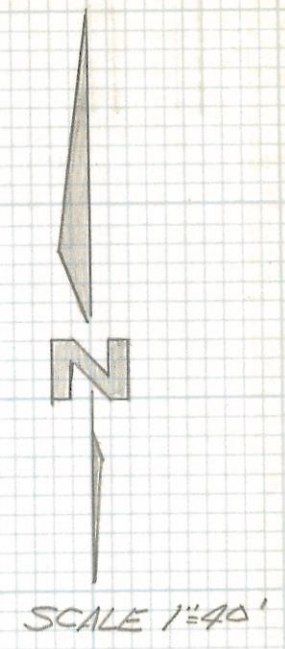
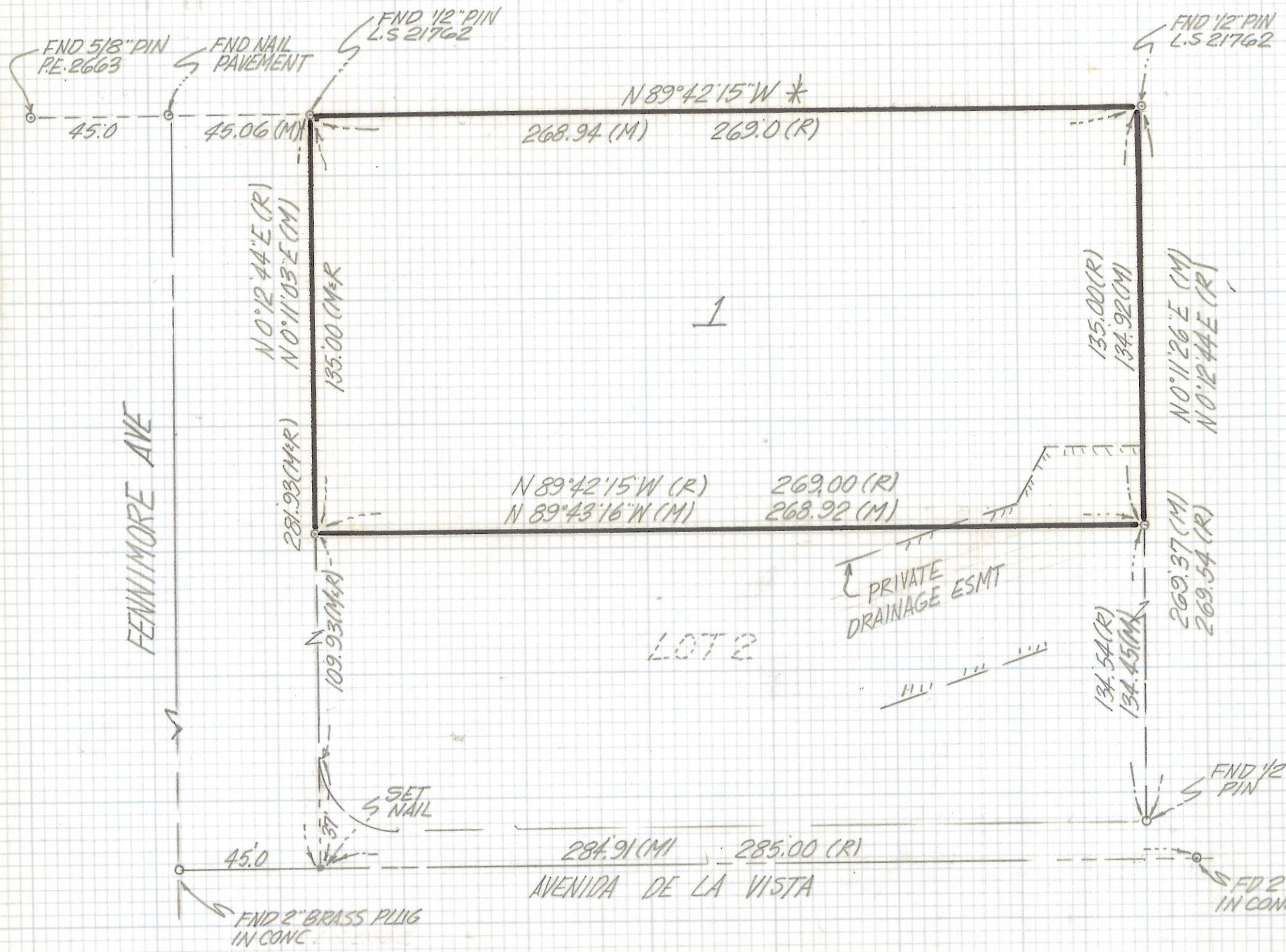


# **DISCLAIMER:**

**This unrecorded Record of Survey was donated to the City of Tucson. The City of Tucson provides this data for your personal use "as is." Additionally, the City of Tucson provides this information with the understanding that it is not guaranteed to be accurate, correct or complete and conclusions drawn from such information are the responsibility of the user.**

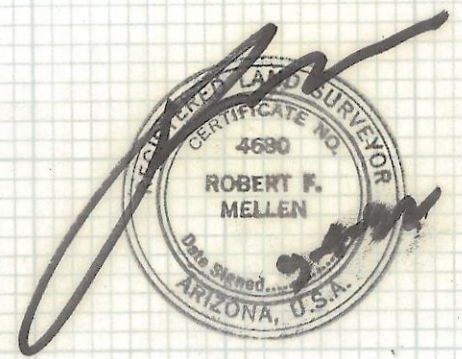


NOTES

- (1) ♀ INDICATES SET 1/2" PIN MKD L.S. 4680 UNLESS NOTED
- (2) M- MEASURED
- (3) R- MAP OR DEED RECORD
- (4) \* BASIS OF BEARINGS N 89°42'15"W NORTH LINE OF LOMA DE LA VISTA VERE SUBDIVISION BOOK 42 PAGE 90 MAPS AND PLATS

RESULTS OF SURVEY

OF LOT 1 LOMA DE LA VISTA VERDE RECORDED IN BOOK 42 OF MAPS AND PLATS AT PAGE 90 IN THE OFFICE OF THE PIMA COUNTY RECORDER PIMA COUNTY ARIZONA



ROBERT F. MELLEN  
REGISTERED LAND SURVEYOR  
TUCSON, ARIZONA  
JOB # 92-121

Z-2017-380