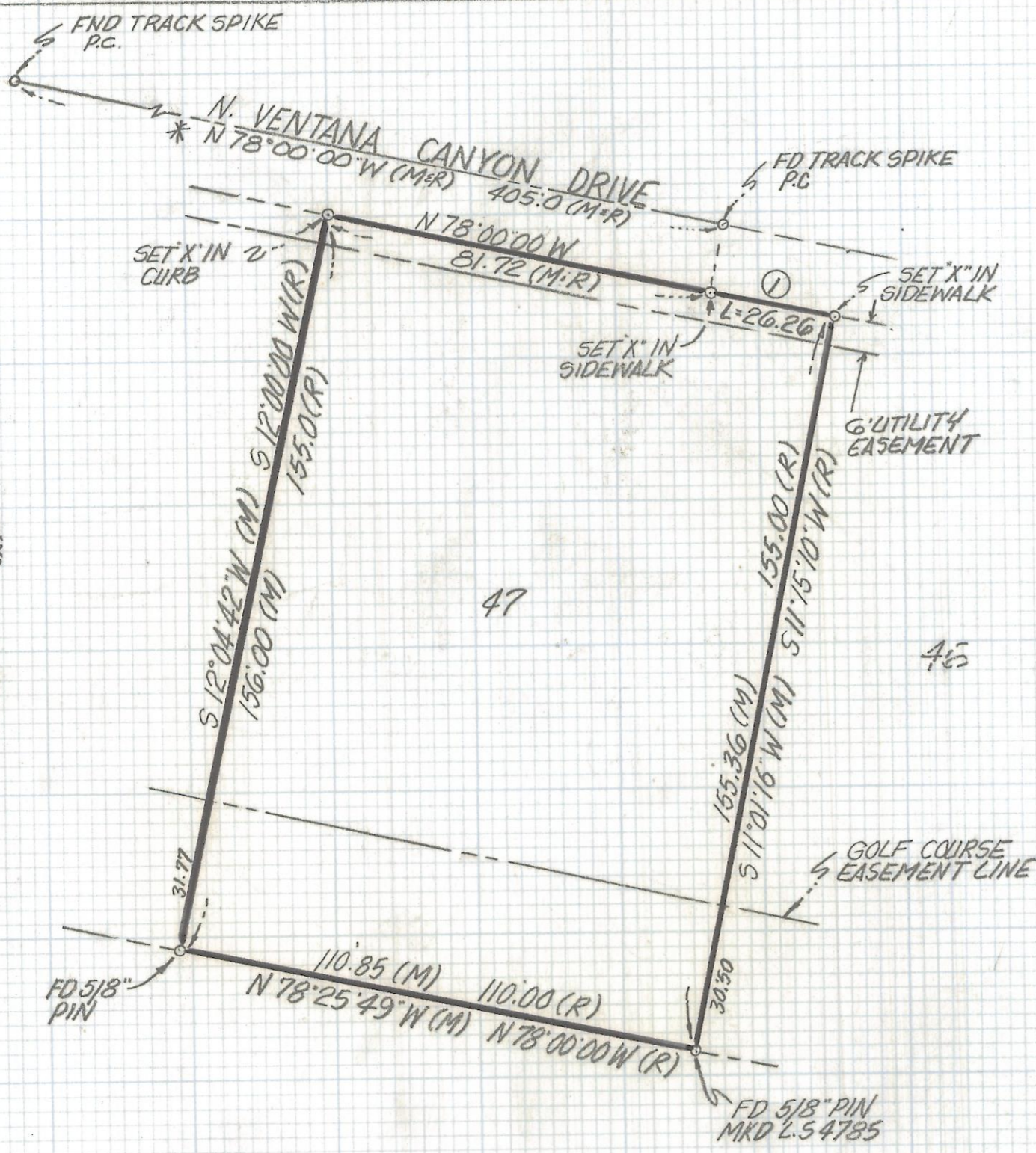


# **DISCLAIMER:**

**This unrecorded Record of Survey was donated to the City of Tucson. The City of Tucson provides this data for your personal use "as is." Additionally, the City of Tucson provides this information with the understanding that it is not guaranteed to be accurate, correct or complete and conclusions drawn from such information are the responsibility of the user.**



CURVE DATA					
N°	RADIUS	DELTA	TANGENT	LENGTH	CHORD
1	2014	0°44'49"	13.13	26.26	26.26



NOTES

- (1) (M) - MEASURED
- (2) R - MAP OR DEED RECORD
- (3) \* BASIS OF BEARINGS N 78°00'00" W CENTERLINE VENTANA CANYON DRIVE PER BOOK 37 PAGE 79 MAPS AND PLATS

RESULTS OF SURVEY

OF LOT 47 VENTANA CANYON ESTATES RECORDED IN BOOK 37 OF MAPS AND PLATS AT PAGE 79 IN THE OFFICE OF THE PIMA COUNTY RECORDER PIMA COUNTY ARIZONA

ROBERT F. MELLEN  
 REGISTERED LAND SURVEYOR  
 TUCSON, ARIZONA  
 JOB# 92-143  
 Z-2017-396