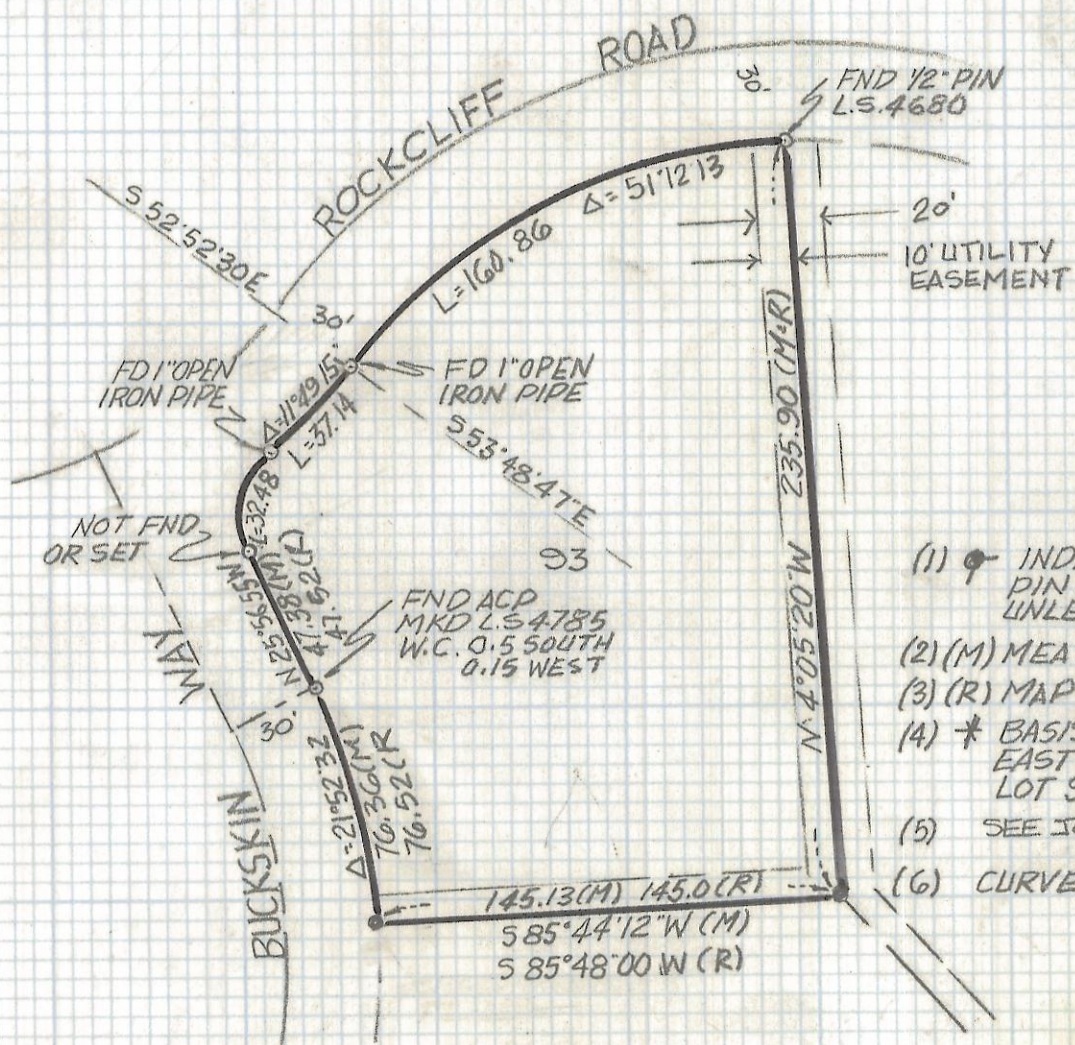


DISCLAIMER:

This unrecorded Record of Survey was donated to the City of Tucson. The City of Tucson provides this data for your personal use "as is." Additionally, the City of Tucson provides this information with the understanding that it is not guaranteed to be accurate, correct or complete and conclusions drawn from such information are the responsibility of the user.

CURVE DATA					
N°	RADIUS	DELTA	TANGENT	LENGTH	CHORD
1	180.0	51°12'13	86.25	160.86	155.56
2	180.0	11°49'15	18.63	37.14	37.07
3	25.0	74°26'19	18.99	32.48	30.24
4	200.0	21°52'32	38.65	76.36	75.90

SCALE 1"=60'

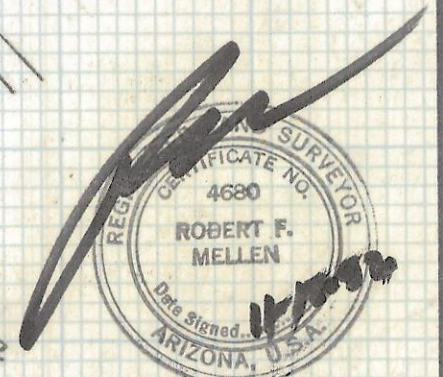


NOTES

- (1) ♀ INDICATES FOUND 1/2" PIN MKD RE 8684 UNLESS NOTED
- (2) (M) MEASURED
- (3) (R) MAP OR DEED RECORD
- (4) * BASIS OF BEARINGS EAST PROPERTY LINE LOT 93 N 4°05'20" W
- (5) SEE JOB# 91-113
- (6) CURVES ARE NOT TANGENT

RESULTS OF SURVEY

OF LOT 93 HIDDEN VALLEY RECORDED IN BOOK 15 OF MAPS AND PLATS AT PAGE 5 IN THE OFFICE OF THE PIMA COUNTY RECORDER PIMA COUNTY ARIZONA



ROBERT F. MELLEN
REGISTERED LAND SURVEYOR
TUCSON ARIZONA
JOB# 92-150

Z-2017-403