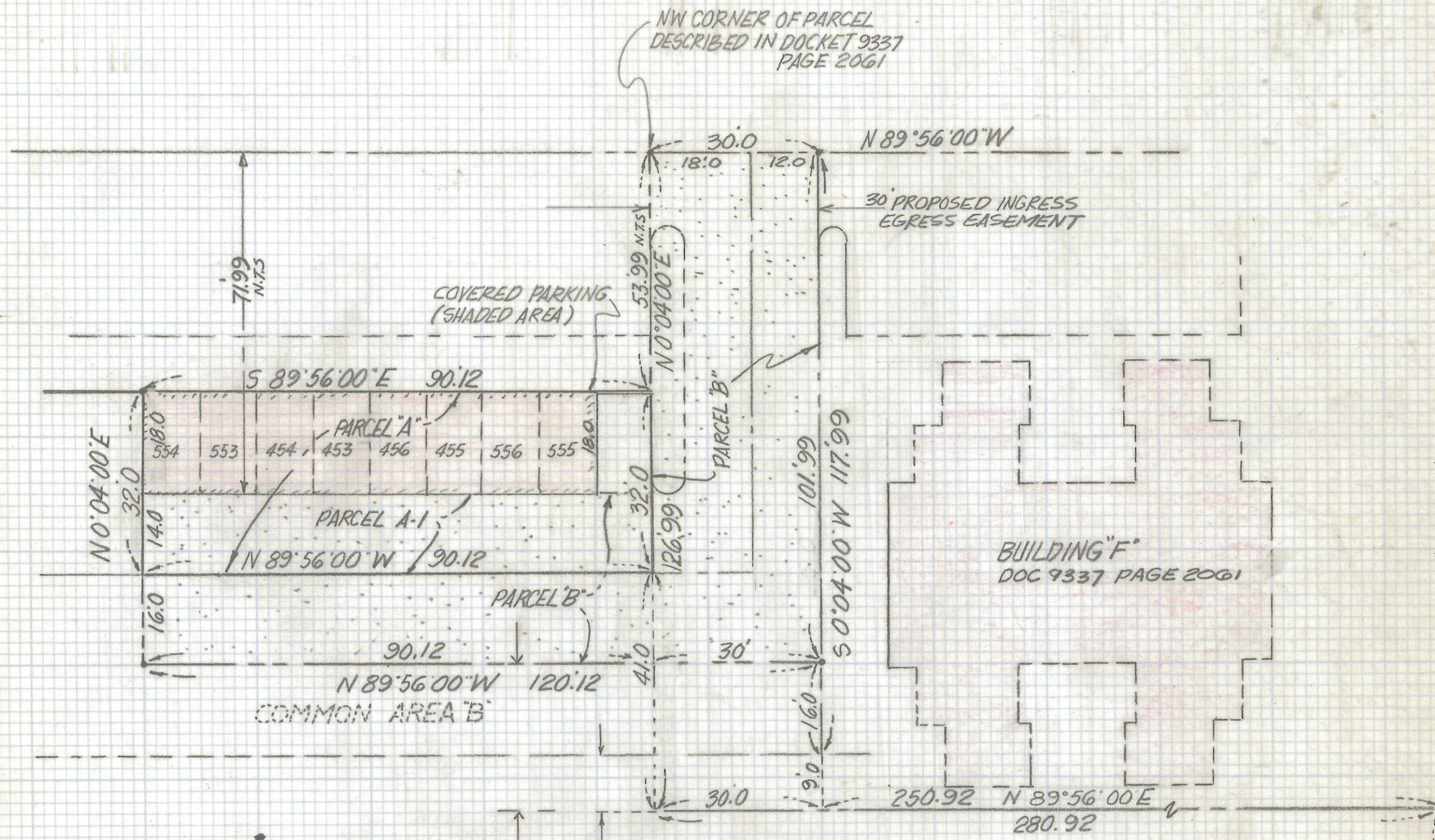


DISCLAIMER:

This unrecorded Record of Survey was donated to the City of Tucson. The City of Tucson provides this data for your personal use "as is." Additionally, the City of Tucson provides this information with the understanding that it is not guaranteed to be accurate, correct or complete and conclusions drawn from such information are the responsibility of the user.



SKETCH OF LEGAL DESCRIPTION

OF A PORTION OF LA VIDA NO 2 AS RECORDED IN BOOK 36 OF MAPS AND PLATS AT PAGE 14 IN THE OFFICE OF THE PIMA COUNTY RECORDER PIMA COUNTY ARIZONA



S.E. CORNER
LA VIDA NO 2
BOOK 36 PAGE 14 M-P

ROBERT F. MELLEN
REGISTERED LAND SURVEYOR
TUCSON, ARIZONA
JOB # 92-156

Z-2017-408