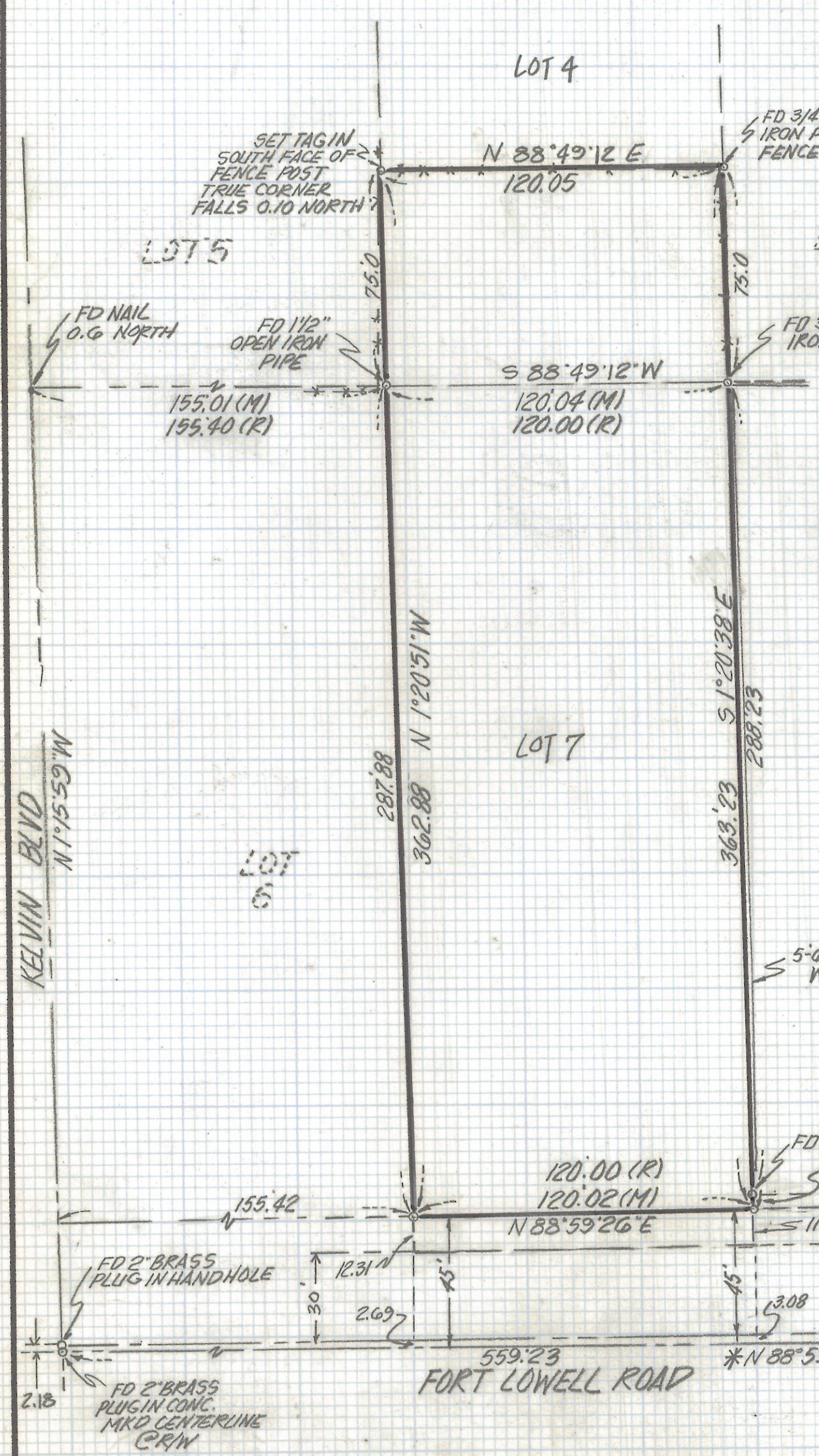


# **DISCLAIMER:**

**This unrecorded Record of Survey was donated to the City of Tucson. The City of Tucson provides this data for your personal use "as is." Additionally, the City of Tucson provides this information with the understanding that it is not guaranteed to be accurate, correct or complete and conclusions drawn from such information are the responsibility of the user.**

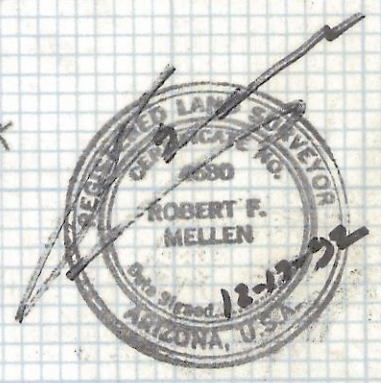


SCALE 1" = 40'



NOTES

- (1) ♀ INDICATES SET 1/2" PIN MKD L.S. 4680 UNLESS NOTED
- (2) M- MEASURED
- (3) R- MAP OR DEED RECORD
- (4) \* BASIS OF BEARINGS N 88°59'26" E CENTERLINE FORT LOWELL RD PER CITY OF TUCSON R/W PLANS. PLAN N° R-84-02 SHT 4 OF 9
- (5) SEE JOB \* 77-153 AND 79-124
- (6) NO TITLE REPORT FURNISHED



RESULTS OF SURVEY

OF A PORTION OF LOT 7 AND THE SOUTH 75.0 OF LOT 4 BLOCK 1 M<sup>c</sup>CALL ADDITION AS RECORDED IN BOOK 4 OF MAPS AND PLATS AT PAGE 55 IN THE OFFICE OF THE PIMA COUNTY RECORDER PIMA COUNTY ARIZONA

ROBERT F. MELLEN  
 REGISTERED LAND SURVEYOR  
 TUCSON, ARIZONA  
 JOB \* 92-161

2-2017-411