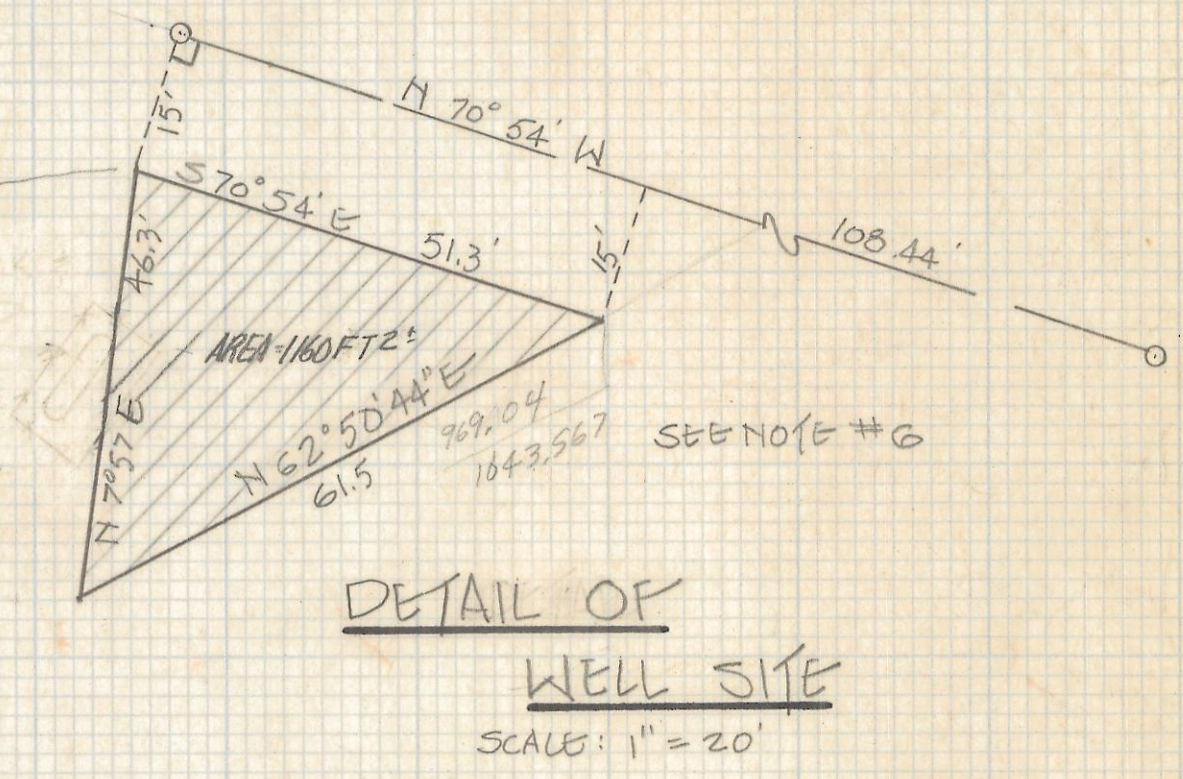
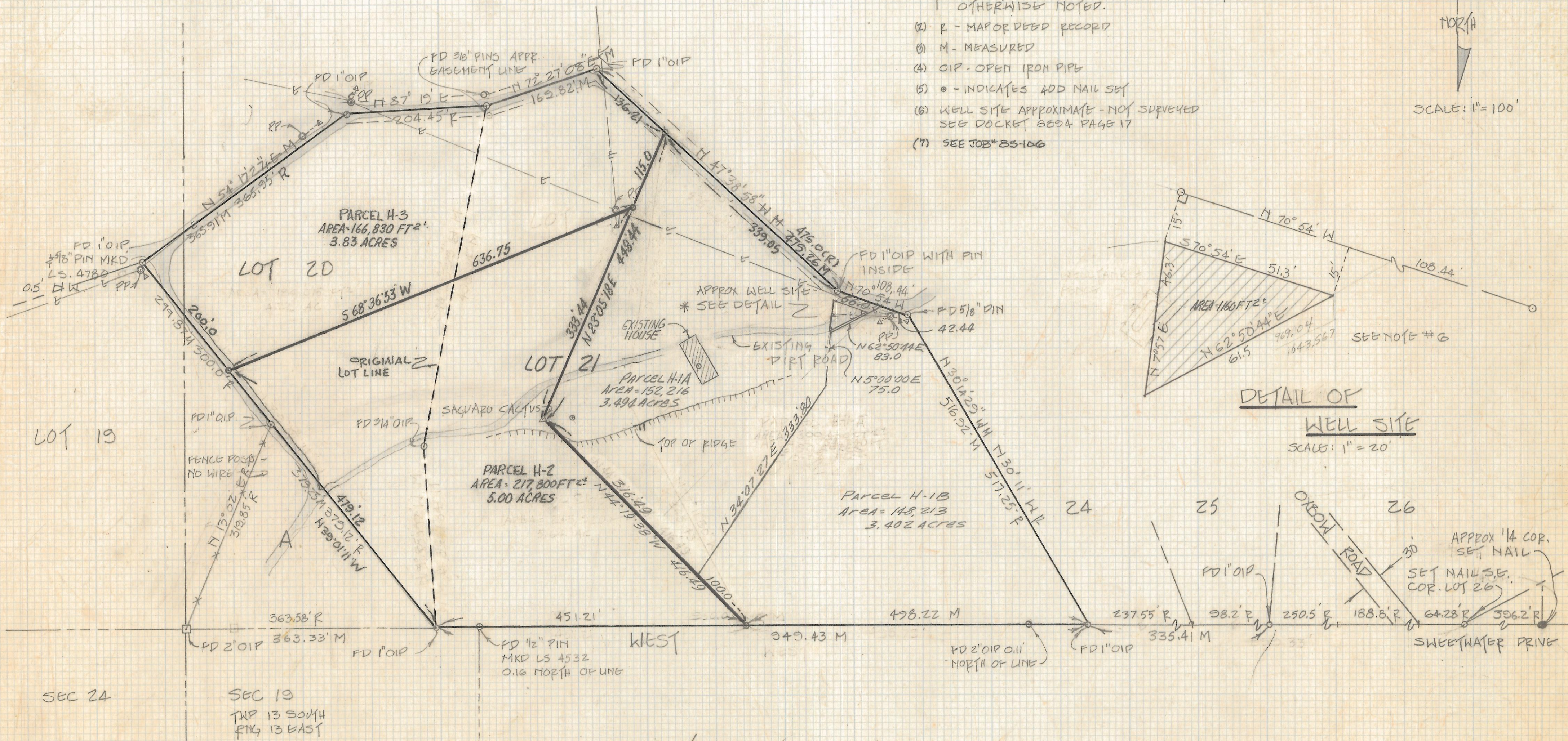
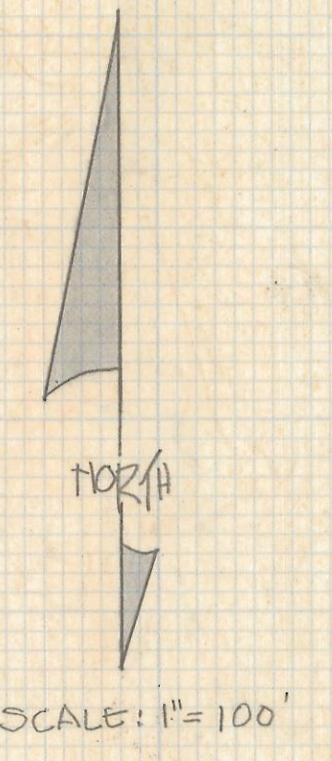


DISCLAIMER:

This unrecorded Record of Survey was donated to the City of Tucson. The City of Tucson provides this data for your personal use "as is." Additionally, the City of Tucson provides this information with the understanding that it is not guaranteed to be accurate, correct or complete and conclusions drawn from such information are the responsibility of the user.

NOTES:

- (1) ○ INDICATES 1/2" PIN MKD LS 4680 SET UNLESS OTHERWISE NOTED.
- (2) R - MAP OR DEED RECORD
- (3) M - MEASURED
- (4) OIP - OPEN IRON PIPE
- (5) ● - INDICATES 40D NAIL SET
- (6) WELL SITE APPROXIMATE - NOT SURVEYED SEE DOCKET 6804 PAGE 17
- (7) SEE JOB # 85-106



RESULTS OF SURVEY

OF LOT 20 AND 21 OF THE TUCSON FOOTHILLS ESTATES #2 AS RECORDED IN THE OFFICE OF THE PIMA COUNTY RECORDER IN BOOK 11 PAGE 30, PIMA COUNTY, ARIZONA.



Z-2017-415
ROBERT F. MELLEN
REGISTERED LAND SURVEYOR
TUCSON, ARIZONA
JOB # 92-171-A