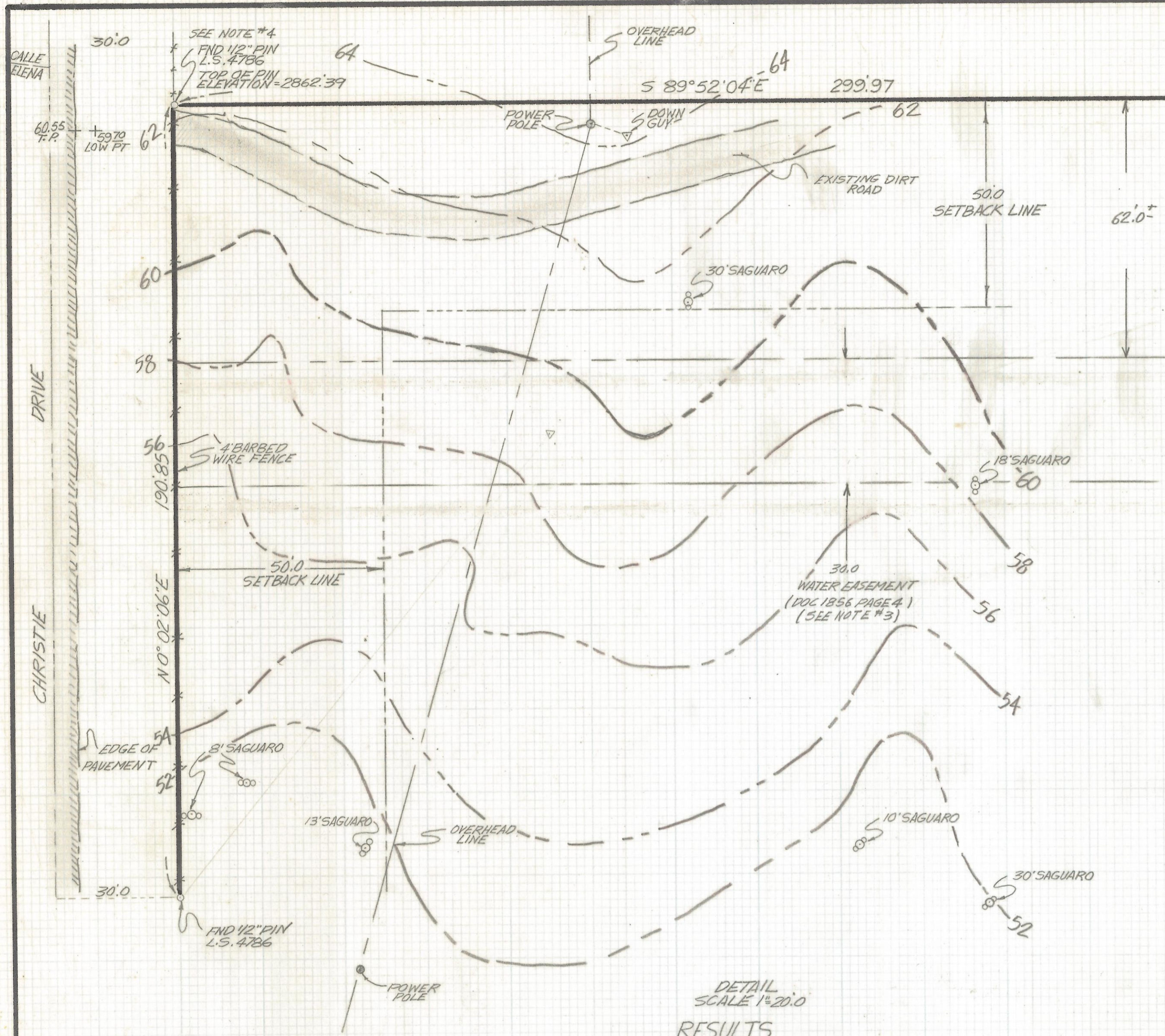


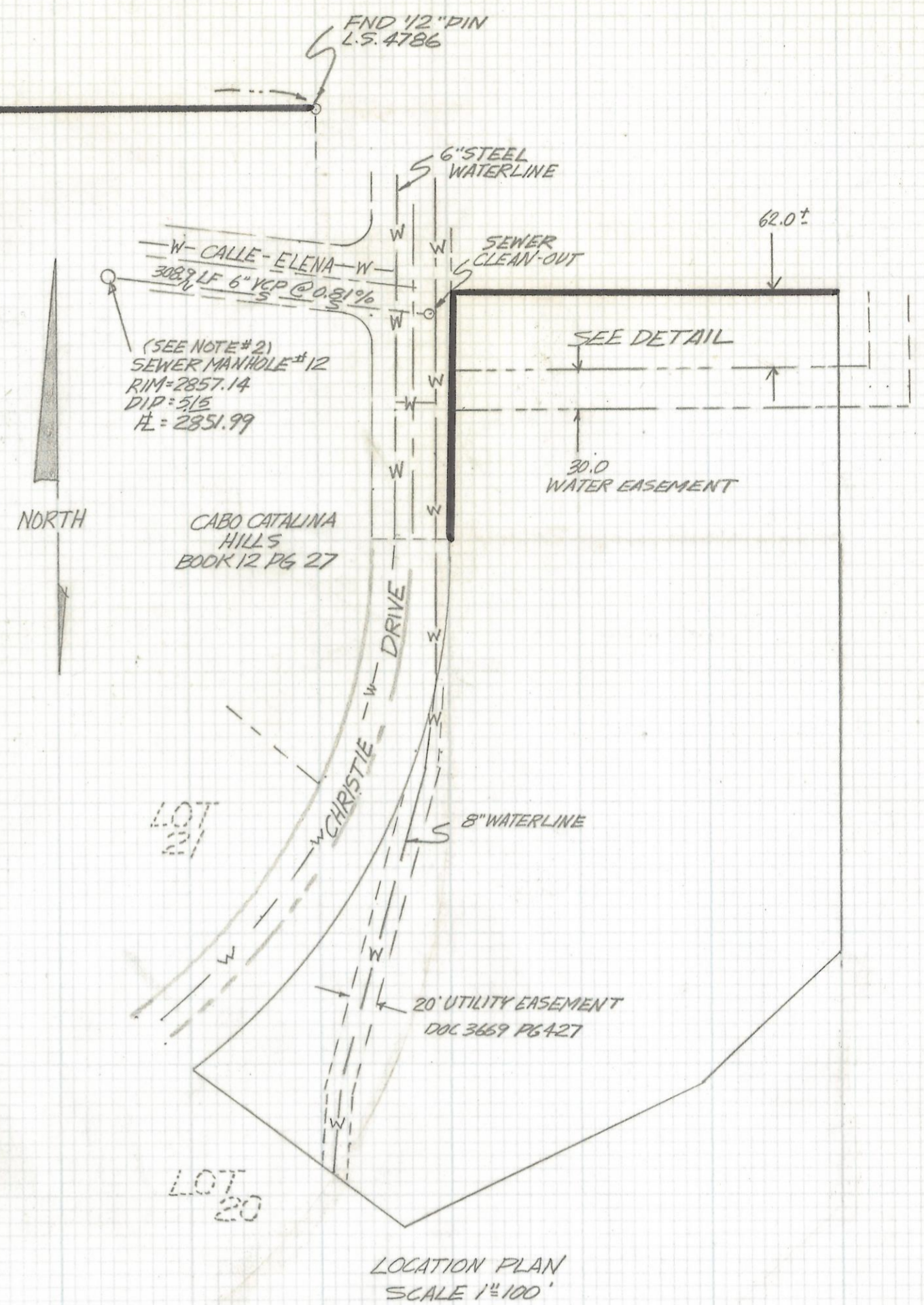
DISCLAIMER:

This unrecorded Record of Survey was donated to the City of Tucson. The City of Tucson provides this data for your personal use "as is." Additionally, the City of Tucson provides this information with the understanding that it is not guaranteed to be accurate, correct or complete and conclusions drawn from such information are the responsibility of the user.



DETAIL
SCALE 1"=20.0'
RESULTS
OF
TOPOGRAPHICAL SURVEY

OF A PORTION OF THE NORTHEAST QUARTER OF SECTION 31,
TOWNSHIP 12 SOUTH, RANGE 14 EAST, GILA AND SALT RIVER
BASE AND MERIDIAN, PIMA COUNTY ARIZONA



NOTES

- (1) THIS IS NOT A BOUNDARY SURVEY
- (2) BENCHMARK RIM OF SEWER MANHOLE #12 ELEVATION 2857.14 PER CITY OF TUCSON SEWER PLAN NO M-418 SHEET 1 OF 1 PIMA COUNTY, ARIZONA
- (3) THERE DOES NOT APPEAR TO BE ANY WATERLINES IN THIS EASEMENT
- (4) FROM NORTHWEST CORNER 37' SOUTH 61' WEST IS A TELEPHONE PEDESTAL
- (5) SEE TUCSON WATER MAP NE 1/4 31-12-14
- (6) SEWER CLEAN-OUT NEAR NORTHWEST PROPERTY CORNER HAS A FLOW LINE ELEVATION OF 2854.50 PER PLAN M-418 (NOT VERIFIED)



REM	ROBERT F. MELLEN REGISTERED LAND SURVEYOR 1250 W. MONAHE ST. TUCSON, ARIZONA (602) 888-1012 SCALE: 1"=20'	DATE: 1-16-91 DR BY: ENT CKY: R.F.M. JOB NO. 914 SHEET 1 OF 1
	Z-2017-423	