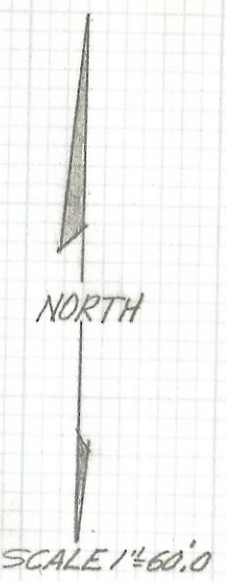


DISCLAIMER:

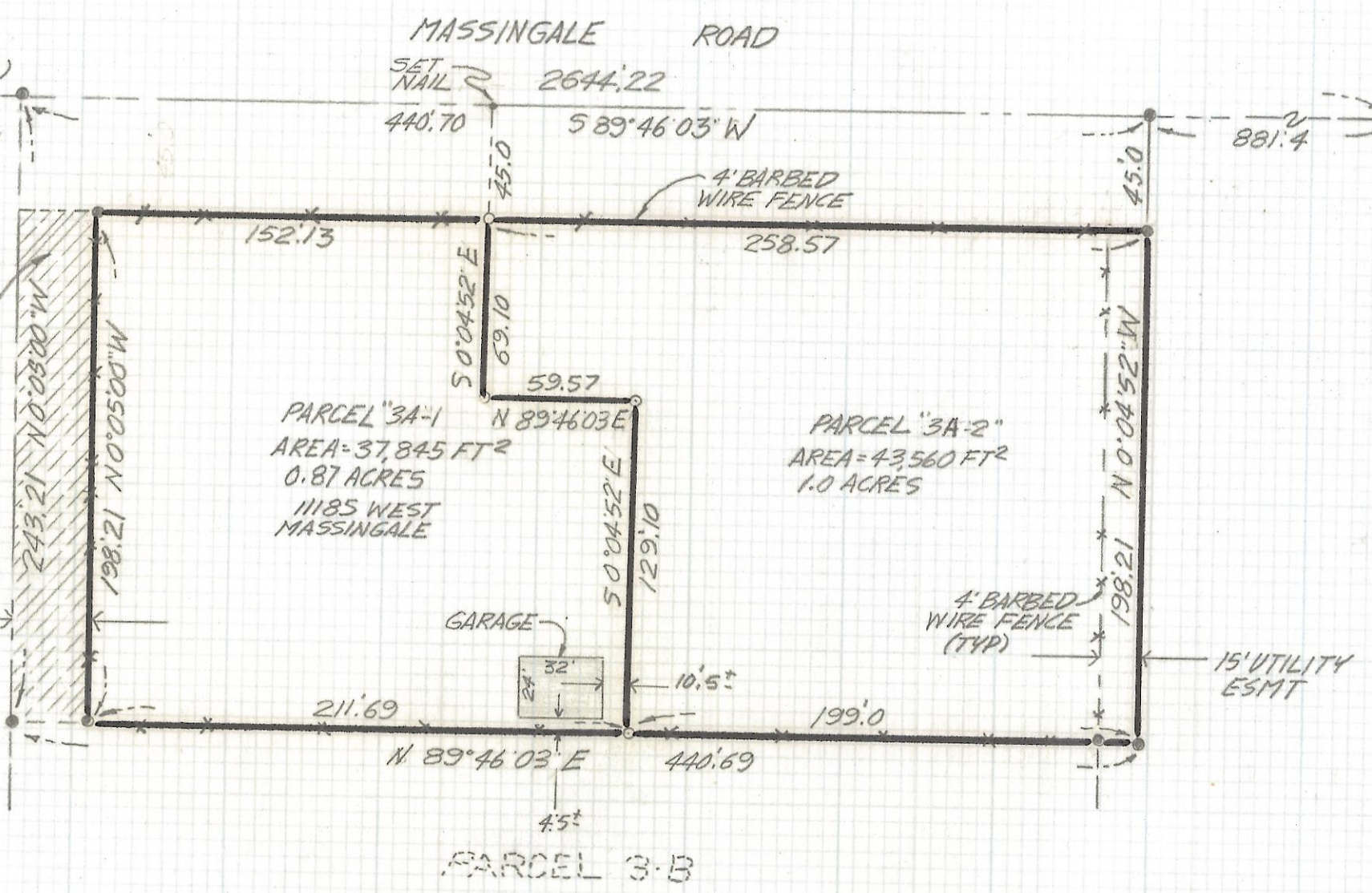
This unrecorded Record of Survey was donated to the City of Tucson. The City of Tucson provides this data for your personal use "as is." Additionally, the City of Tucson provides this information with the understanding that it is not guaranteed to be accurate, correct or complete and conclusions drawn from such information are the responsibility of the user.



FND 1/2 LCP
MKD 116
(SEE JOB 81-90)

FND 6.10 BRASS
CAP MKD 34/35
1913
(SEE JOB 81-90)

CROSS HATCHED
AREA CONTAINS
5945 FT²
0.14 ACRES



NOTES

- (1) - ○ INDICATES SET 1/2" PIN MKD L.S. 4680 UNLESS NOTED
- (2) - ● INDICATES FOUND 1/2" PIN MKD L.S. 4680 UNLESS NOTED
- (3) SEE JOB* 79-111 AND JOB* 81-90

RESULTS OF SURVEY

OF A PORTION OF LOT 1 OF SECTION 34 TOWNSHIP 12 SOUTH OF RANGE 11 EAST GILA AND SALT RIVER BASE AND MERIDIAN, PIMA COUNTY ARIZONA



ROBERT F. MELLEN
REGISTERED LAND SURVEYOR
TUCSON, ARIZONA
JOB* 91-9
Z-2017-026