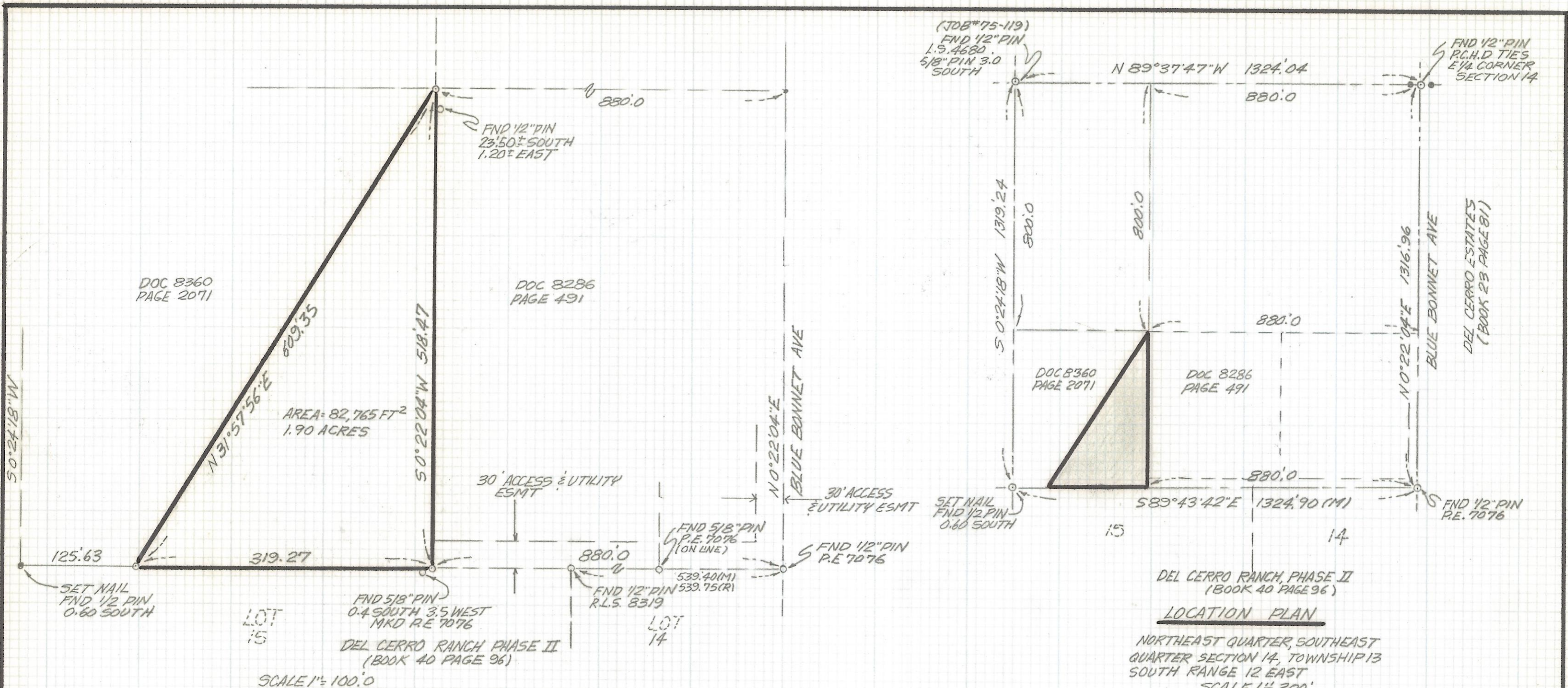


# **DISCLAIMER:**

**This unrecorded Record of Survey was donated to the City of Tucson. The City of Tucson provides this data for your personal use "as is." Additionally, the City of Tucson provides this information with the understanding that it is not guaranteed to be accurate, correct or complete and conclusions drawn from such information are the responsibility of the user.**





RESULTS OF SURVEY

OF A PORTION OF THE NORTHEAST QUARTER OF THE SOUTHEAST QUARTER SECTION 14, TOWNSHIP 13 SOUTH RANGE 12 EAST GILA AND SALT RIVER BASE AND MERIDIAN, PIMA COUNTY, ARIZONA.

NOTES

- (1) -  $\circ$  INDICATES SET 1/2" PIN MKD L.S. 4680 UNLESS NOTED
- (2) SEE JOB # 75-119 AND 78-6



<b>RFM</b>	ROBERT F. MELLEN	DATE: 2-4-91
	REGISTERED LAND SURVEYOR	DR BY: EMT CK BY: RFM
	1250 W. MOHAVE ST. TUCSON, ARIZONA	JOB NO. 91-10
(602) 888-1012 SCALE: 1" = 100'		SHEET 1 OF 1

Z-2017-427

REVISIONS	DATE