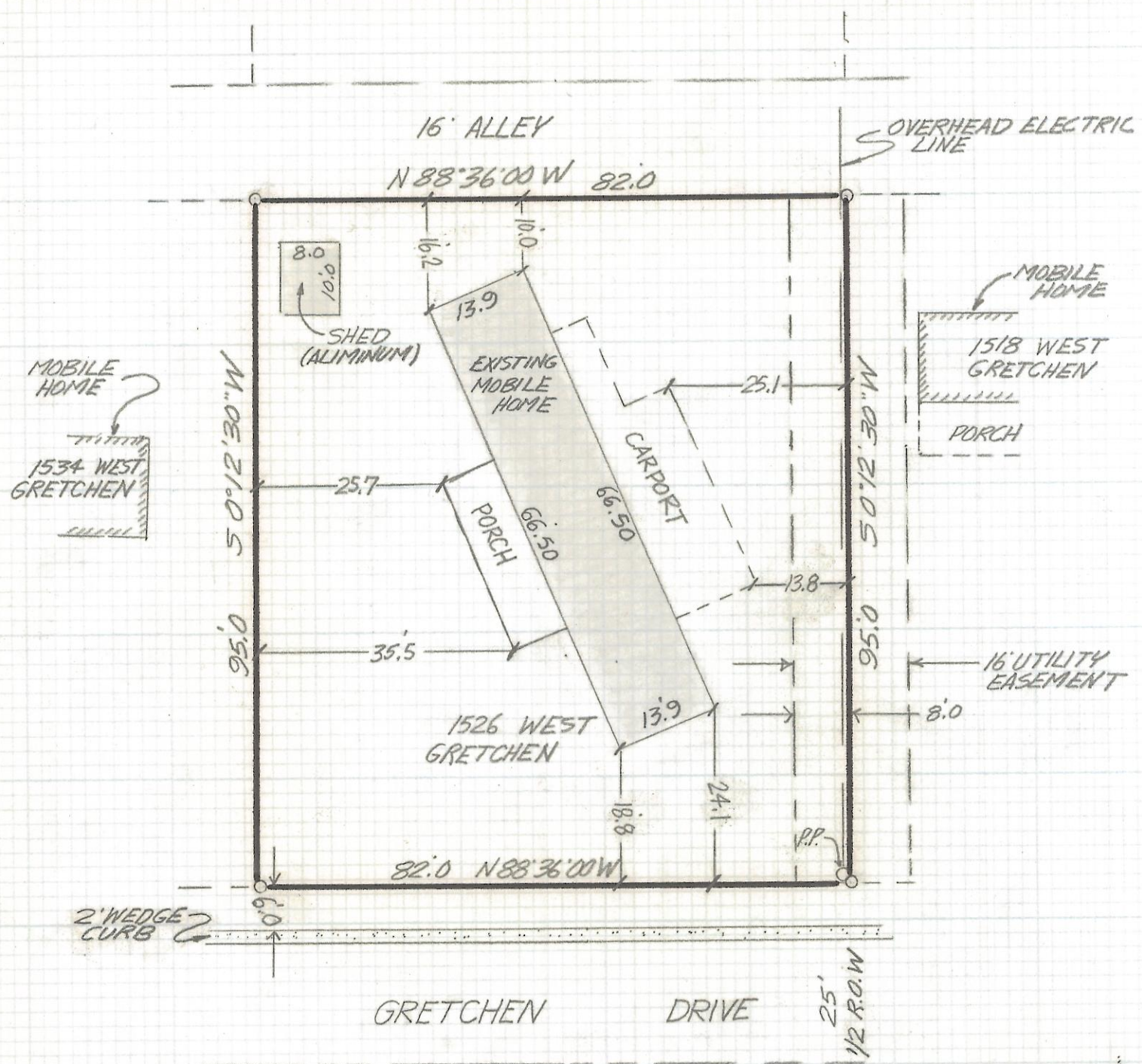


DISCLAIMER:

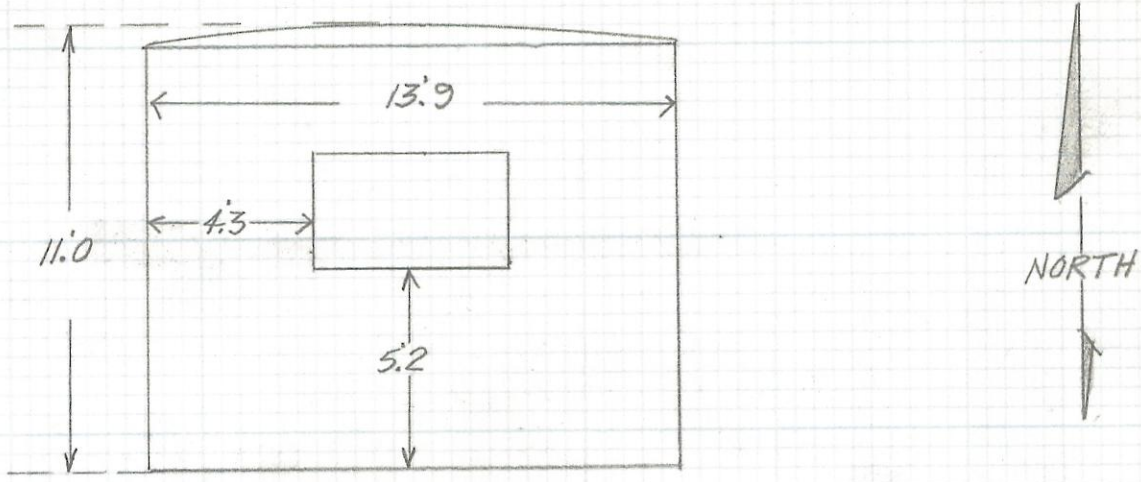
This unrecorded Record of Survey was donated to the City of Tucson. The City of Tucson provides this data for your personal use "as is." Additionally, the City of Tucson provides this information with the understanding that it is not guaranteed to be accurate, correct or complete and conclusions drawn from such information are the responsibility of the user.



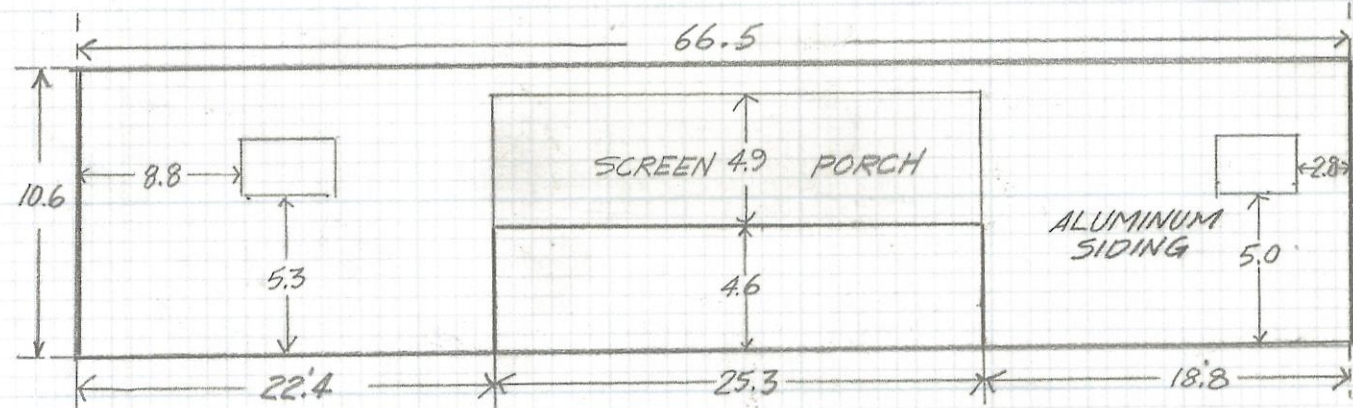
SCALE 1"=20.0

DEVELOPMENT PLAN
OF

MOBILE HOME AT 1526 WEST GRETCHEN DRIVE
LOT 9 BLOCK 1 OF FLOWING WELLS PARK BOOK 13
AT PAGE 52 OF MAPS AND PLATS PIMA COUNTY, ARIZONA



SOUTH VIEW
SCALE 1"=5.0



WEST VIEW
N.T.S.

NOTES

- (1) \circ - INDICATES 5/8" STEEL PIN FOUND
- (2) THIS DRAWING DOES NOT REPRESENT A LAND SURVEY
- (3) PROPERTY DIMENSIONS AND BEARINGS FROM RECORDED PLAT



Z-2017-428

ROBERT F. MELLEN
REGISTERED LAND SURVEYOR
TUCSON, ARIZONA
JOB # 91-11