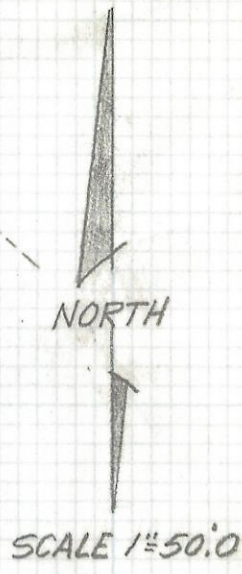
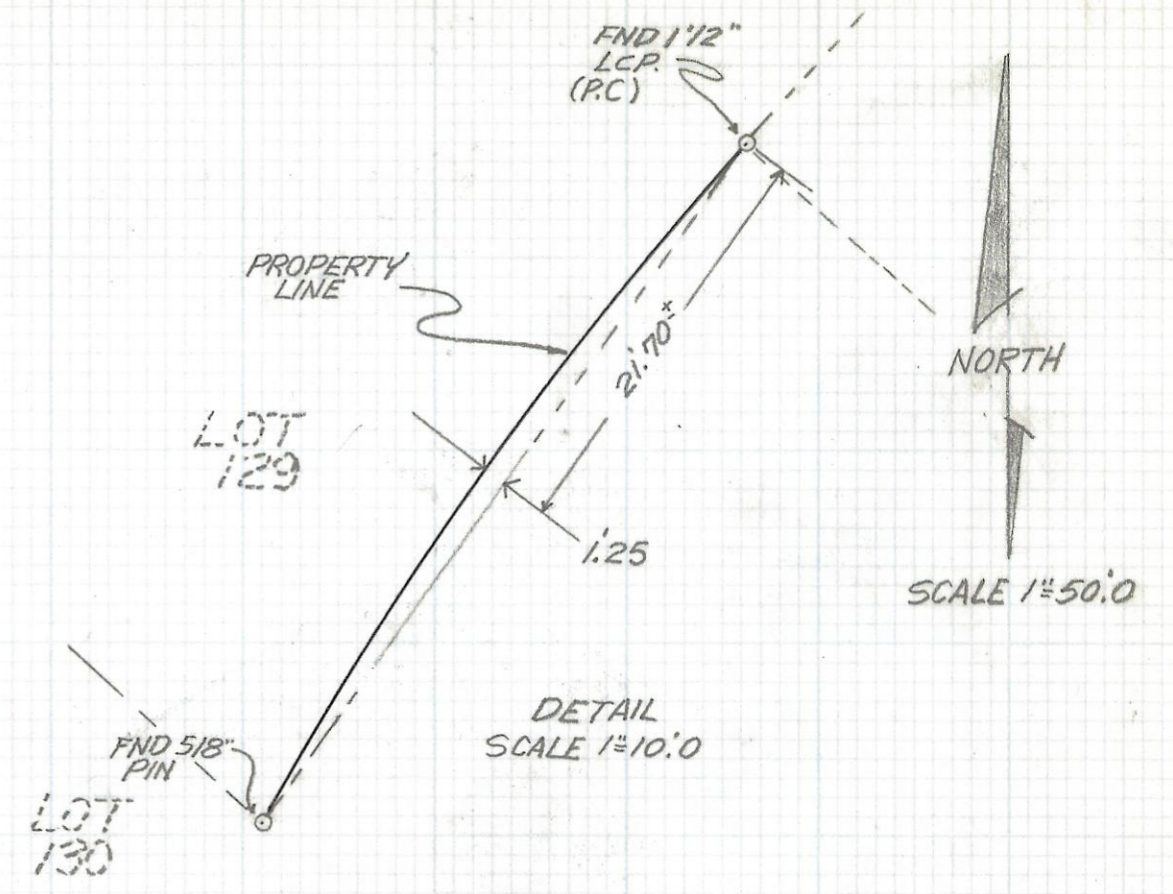
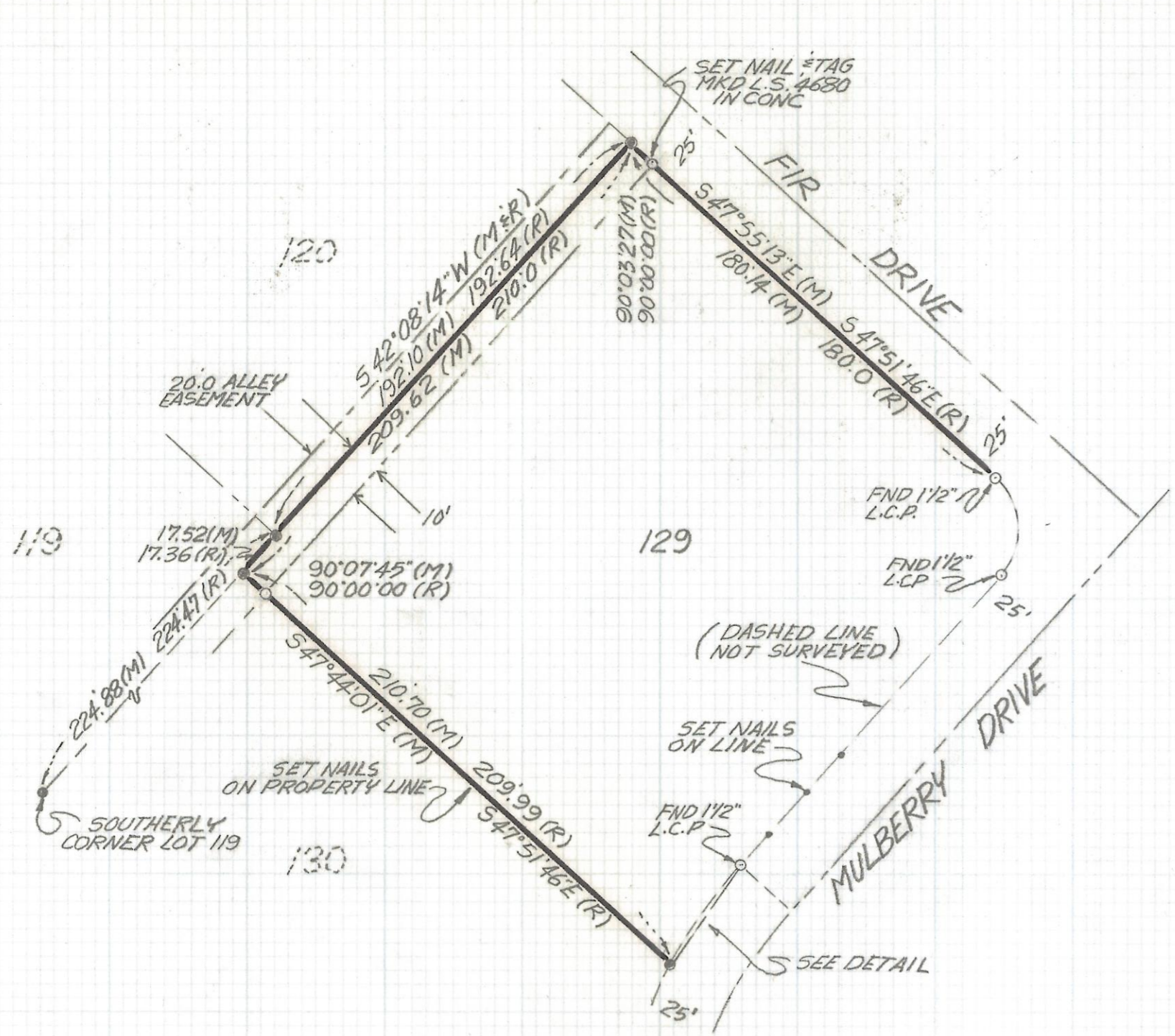


DISCLAIMER:

This unrecorded Record of Survey was donated to the City of Tucson. The City of Tucson provides this data for your personal use "as is." Additionally, the City of Tucson provides this information with the understanding that it is not guaranteed to be accurate, correct or complete and conclusions drawn from such information are the responsibility of the user.



NOTES

- (1) INDICATES SET 1/2" PIN MKD L.S. 4680 UNLESS NOTED
- (2) INDICATES FOUND 5/8" STEEL PIN
- (3) L.C.P. - LEAD CAPPED PIPE
- (4) M - MEASURED
- (5) R - MAP OR DEED RECORD
- (6) SEE JOB# 88-48
- (7) P.C. POINT OF CURVE

RESULTS OF SURVEY

OF A PORTION OF LOT 129 MESALAND ANNEX AS RECORDED IN BOOK 11 OF MAPS AND PLATS AT PAGE 100 IN THE OFFICE OF THE PIMA COUNTY RECORDER PIMA COUNTY, ARIZONA



ROBERT F. MELLEN
 REGISTERED LAND SURVEYOR
 TUCSON, ARIZONA
 JOB# 91-12

Z-2017-429