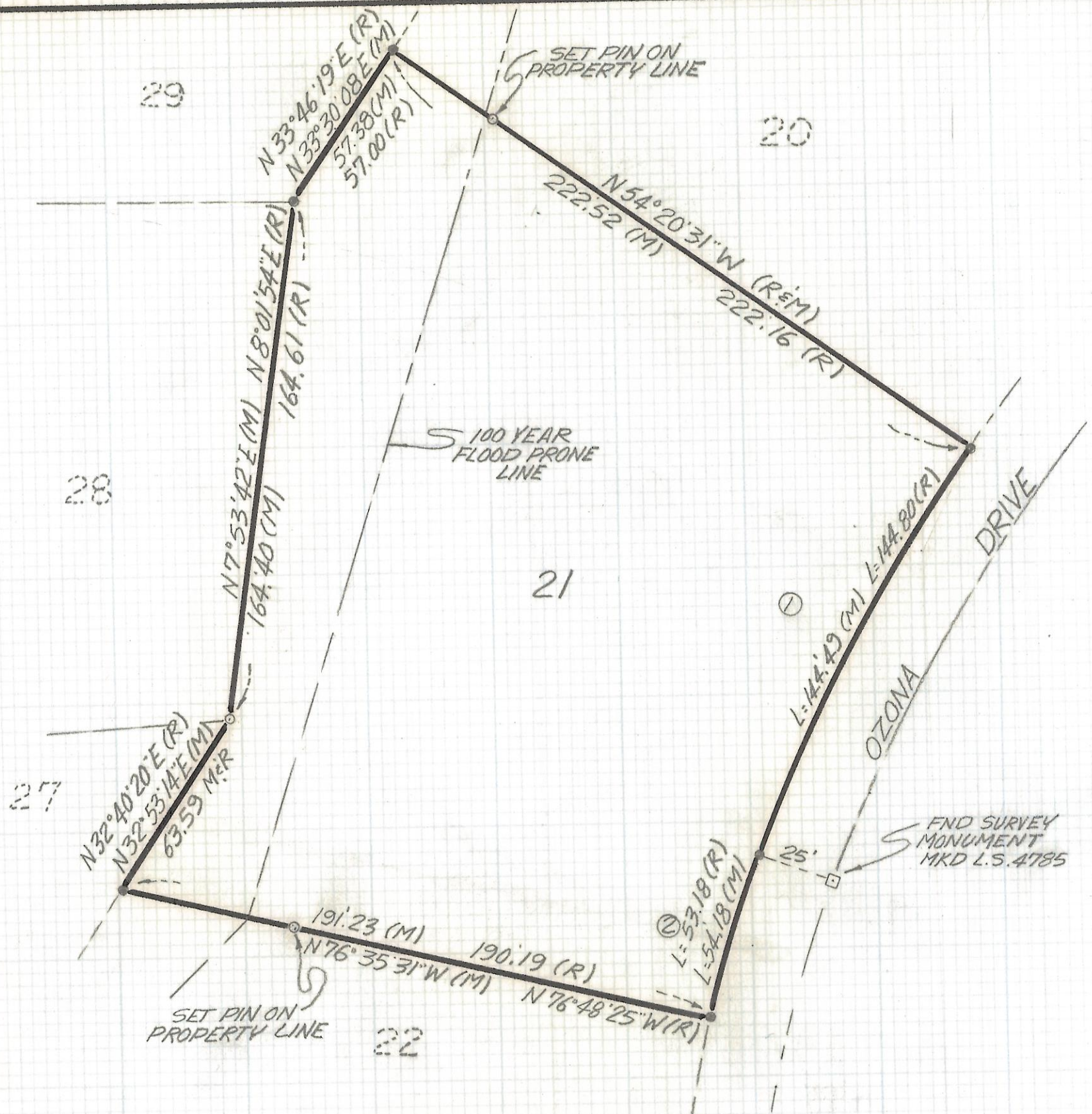
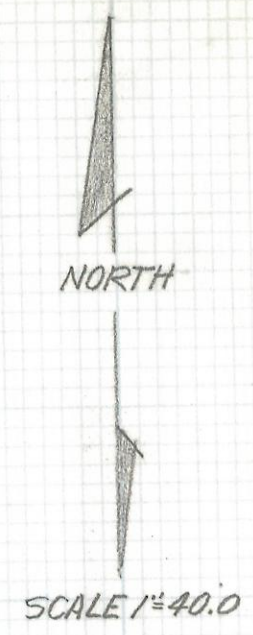


DISCLAIMER:

This unrecorded Record of Survey was donated to the City of Tucson. The City of Tucson provides this data for your personal use "as is." Additionally, the City of Tucson provides this information with the understanding that it is not guaranteed to be accurate, correct or complete and conclusions drawn from such information are the responsibility of the user.



CURVE DATA				
	RADIUS	DELTA	TANGENT	LENGTH CHORD
①	571.0	14° 29' 57"	72.64	144.49 144.11
②	384.0	8° 05' 28"	27.16	54.23 54.18



NOTES

- (1) Ⓞ INDICATES SET 1/2" PIN MKD L.S. 4680 UNLESS NOTED
- (2) ● INDICATES FOUND 5/8" STEEL PIN
- (3) M- MEASURED
- (4) R- MAP OR DEED RECORD

RESULTS OF SURVEY

OF LOT 21 LAS LOMAS DE KINO AS RECORDED IN BOOK 29 OF MAPS AND PLATS AT PAGE 42 IN THE OFFICE OF THE PIMA COUNTY RECORDER PIMA COUNTY, ARIZONA



ROBERT F. MELLEN
 REGISTERED LAND SURVEYOR
 TUCSON, ARIZONA
 JOB # 91-14

2-2017-430