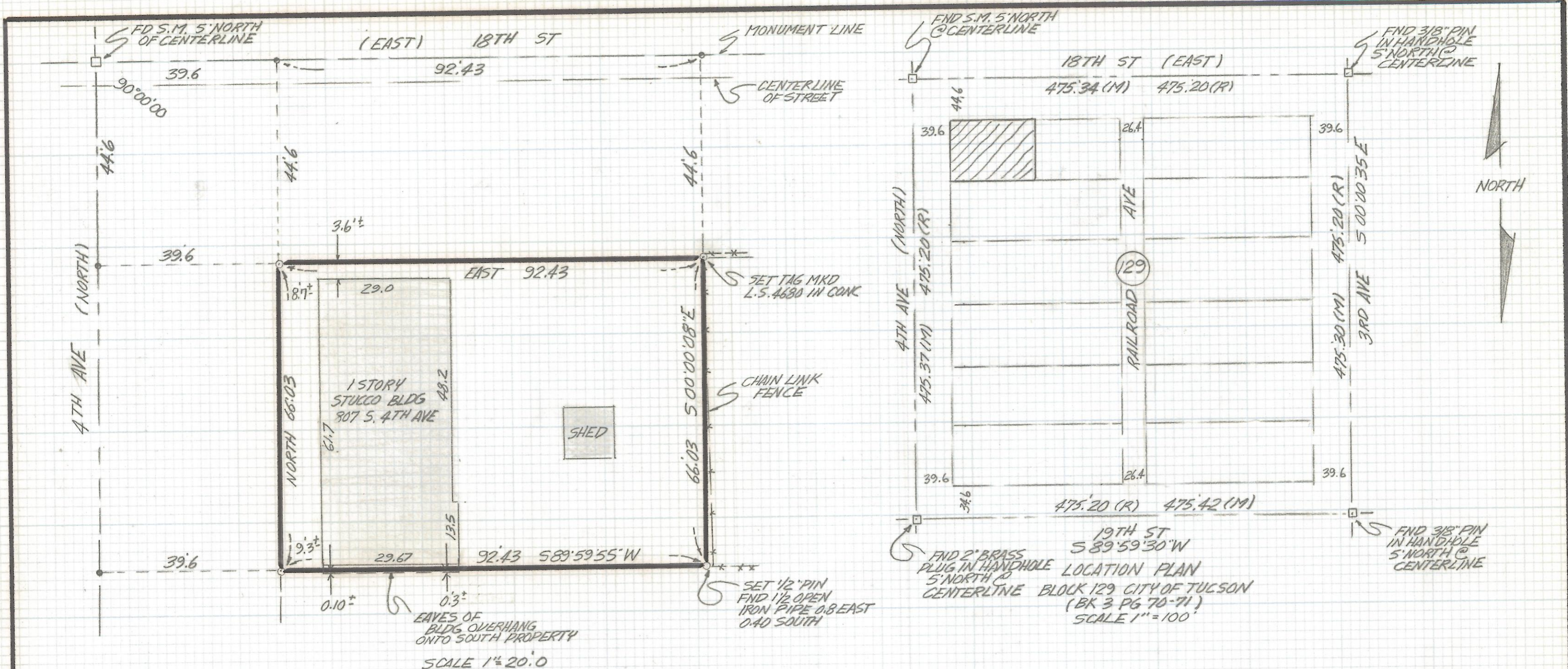


DISCLAIMER:

This unrecorded Record of Survey was donated to the City of Tucson. The City of Tucson provides this data for your personal use "as is." Additionally, the City of Tucson provides this information with the understanding that it is not guaranteed to be accurate, correct or complete and conclusions drawn from such information are the responsibility of the user.



19TH ST
S 89°59'30"W
LOCATION PLAN
BLOCK 129 CITY OF TUCSON
(BK 3 PG 70-71)
SCALE 1" = 100'

NOTES

- (1) ○ INDICATES SET 1/2" PIN MKD L.S. 4680 UNLESS NOTED
- (2) ⊙ INDICATES NAIL SET
- (3) M-MEASURED
- (4) R-MAP OR DEED RECORD

RESULTS OF SURVEY

OF THE WEST HALF OF LOT 2 BLOCK 129 CITY OF TUCSON
RECORDED IN BOOK 3 OF MAPS AND PLATS AT PAGE 70-71
IN THE OFFICE OF THE PIMA COUNTY RECORDER PIMA COUNTY
ARIZONA



ROBERT F. MELLEN
REGISTERED LAND SURVEYOR
TUCSON, ARIZONA
JOB# 91-34

Z-2017-440