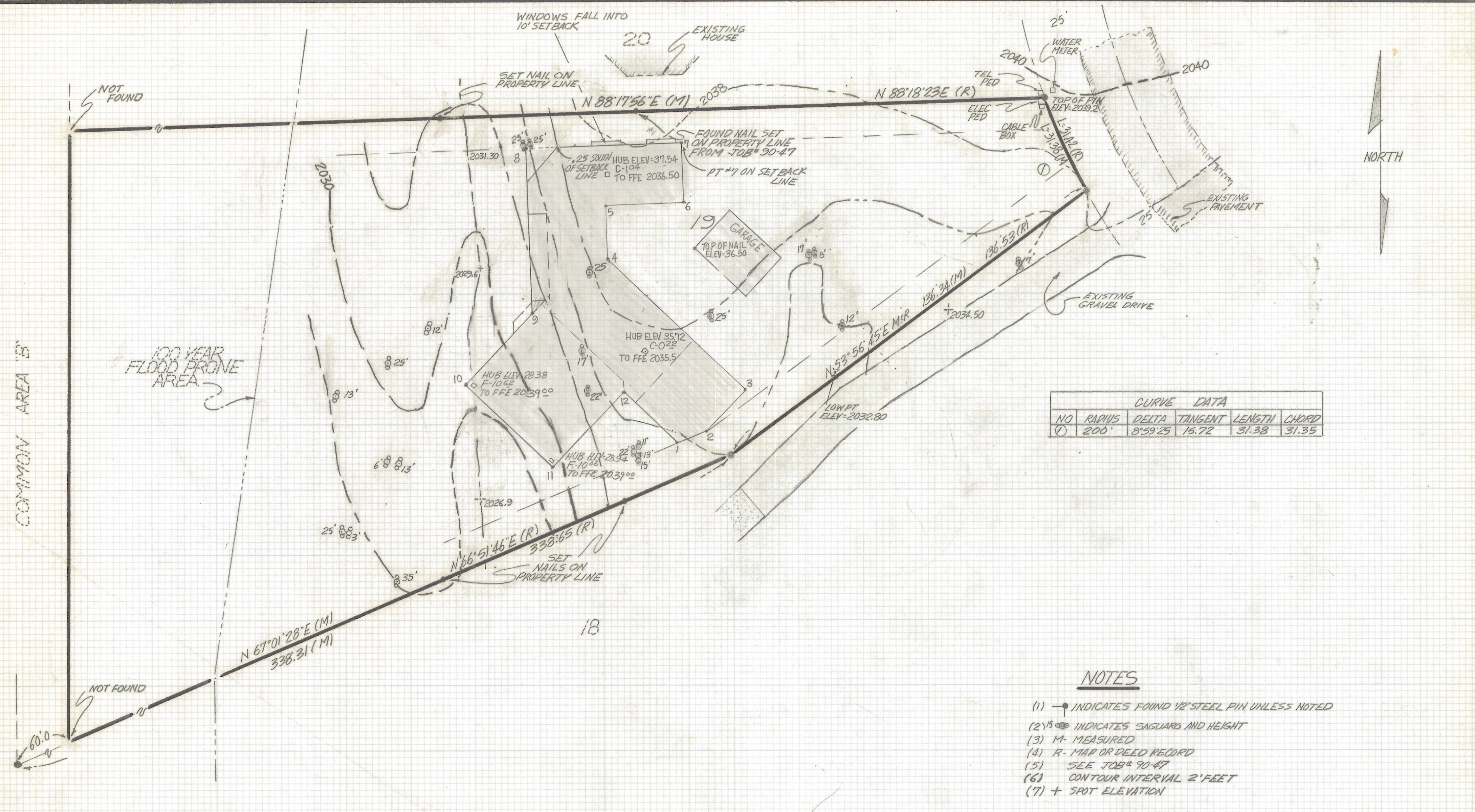


DISCLAIMER:

This unrecorded Record of Survey was donated to the City of Tucson. The City of Tucson provides this data for your personal use "as is." Additionally, the City of Tucson provides this information with the understanding that it is not guaranteed to be accurate, correct or complete and conclusions drawn from such information are the responsibility of the user.



TOPOGRAPHICAL SURVEY
OF

A PORTION OF LOT 19 OF AMENDED PLAT OF CANYON VIEW ESTATES
RECORDED IN BOOK 37 OF MAPS AND PLATS AT PAGE 65 IN THE OFFICE
OF THE PIMA COUNTY RECORDER PIMA COUNTY, ARIZONA

NOTES

- (1) — INDICATES FOUND 1/2" STEEL PIN UNLESS NOTED
- (2) 15' 00" INDICATES SAGUARS AND HEIGHT
- (3) M- MEASURED
- (4) R- MAP OR DEED RECORD
- (5) SEE JOB# 90-47
- (6) CONTOUR INTERVAL 2' FEET
- (7) + SPOT ELEVATION



RFM	Z-2017-441		REVISIONS /	DATE
	ROBERT F. MELLEN			DATE: 3-29-91
	REGISTERED LAND SURVEYOR		DR BY: EMT	CK BY: RFM
	1250 W. MOHAVE ST. TUCSON, ARIZONA		JOB NO. 91-41	
(602) 888-1012		SCALE: 1"=20'	SHEET 1 OF 1	

GRADES TO FFE
REVISED LOCATION OF BLDG AS STAKED
REVISED TOPO TO WEST 4-5-91