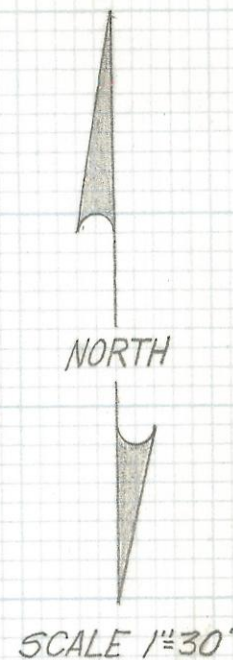
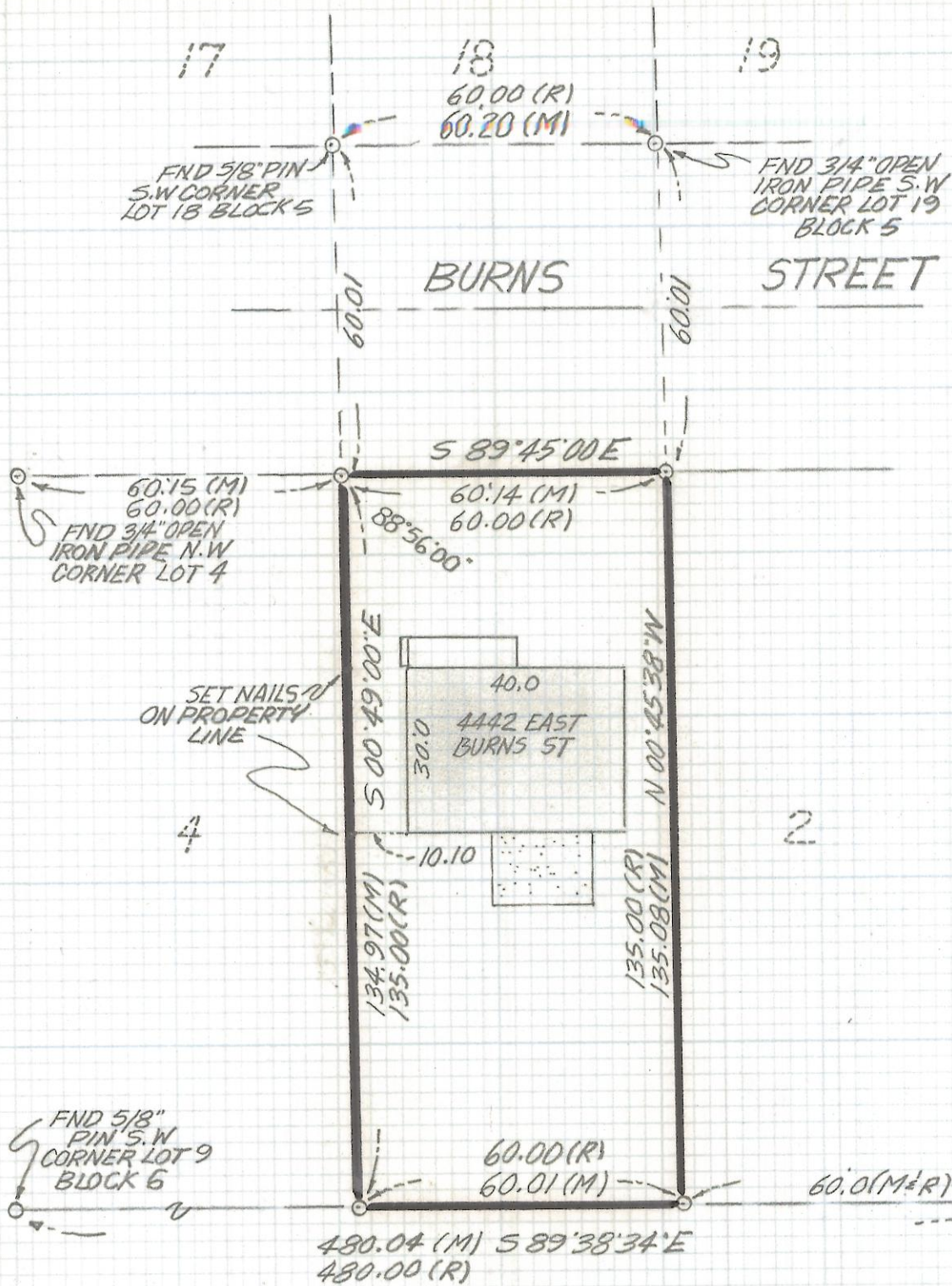


# **DISCLAIMER:**

**This unrecorded Record of Survey was donated to the City of Tucson. The City of Tucson provides this data for your personal use "as is." Additionally, the City of Tucson provides this information with the understanding that it is not guaranteed to be accurate, correct or complete and conclusions drawn from such information are the responsibility of the user.**

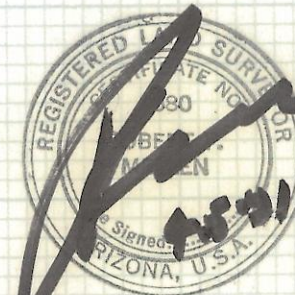


### NOTES

- (1) ♀ INDICATES SET 1/2" PIN MKD L.S. 4680 UNLESS NOTED
- (2) M-MEASURED
- (3) R- MAP OR DEED RECORD
- (4) BASIS OF BEARINGS S 89°45'00"E SOUTH LINE OF CREST VIEW SUBDIVISION PER BOOK 10 OF MAPS AND PLATS AT PAGE 72

### RESULTS OF SURVEY

OF LOT 3 BLOCK 6 BROADWAY MANOR RECORDED IN BOOK 6 OF MAPS AND PLATS AT PAGE 55 IN THE OFFICE OF THE PIMA COUNTY RECORDER PIMA COUNTY ARIZONA



ROBERT F. MELLEN  
REGISTERED LAND SURVEYOR  
TUCSON, ARIZONA  
JOB# 91-44

Z-2017-445