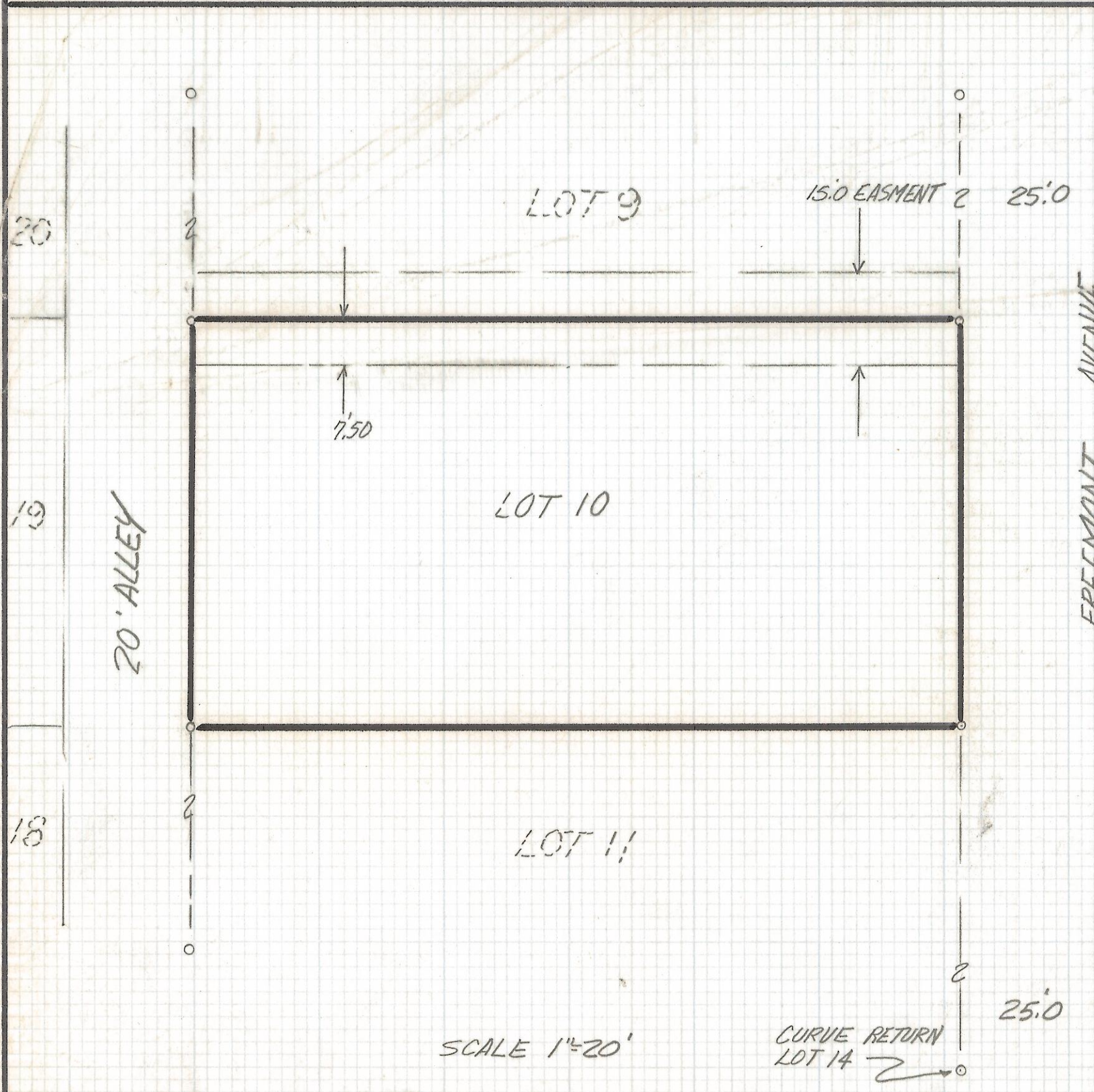


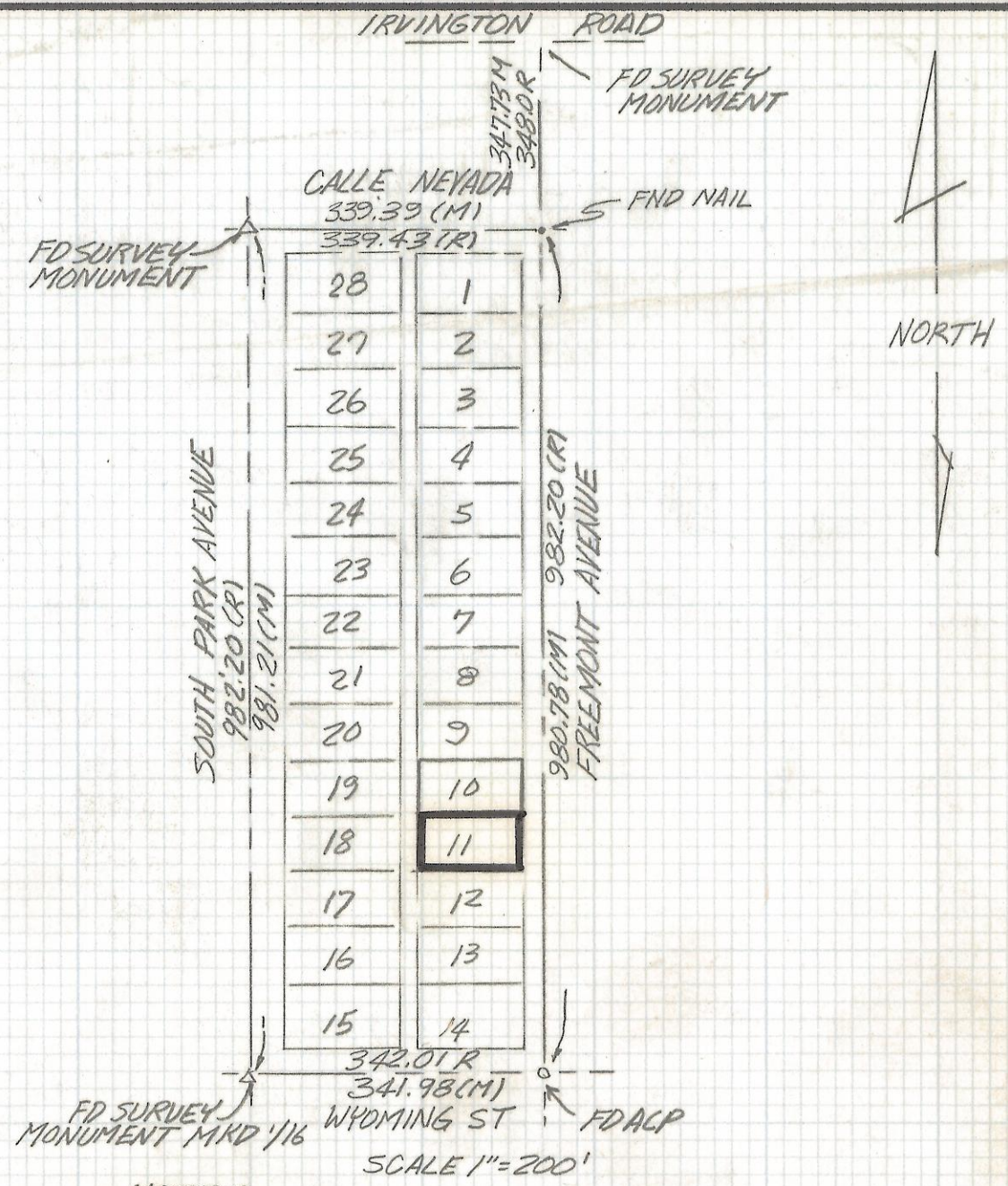
# **DISCLAIMER:**

**This unrecorded Record of Survey was donated to the City of Tucson. The City of Tucson provides this data for your personal use "as is." Additionally, the City of Tucson provides this information with the understanding that it is not guaranteed to be accurate, correct or complete and conclusions drawn from such information are the responsibility of the user.**



RESULTS OF SURVEY

OF LOT 10 BLOCK 2 OF IRVINGTON PARK SUBDIVISION  
 RECORDED IN BOOK 9 OF MAPS AND PLATS AT PAGE 98  
 IN THE OFFICE OF THE PIMA COUNTY RECORDER PIMA  
 COUNTY, ARIZONA



NOTES

- (1) ● INDICATES FOUND 5/8" PIN UNLESS NOTED
- (2) ⊕ INDICATES SET 1/2" PIN MKD L.S 4680 UNLESS NOTED
- (3) M- MEASURED
- (4) R- MAP OR DEED RECORD
- (5) SURVEY MONUMENTS IN WYOMING STREET DO NOT AGREE WITH INTERNAL CORNERS FOUND IN BLOCK 2
- (6) SEE BOOK 1381-P 74 C.O.T.
- (7) SEE JOB# 89-47

ROBERT F. MELLEN  
 REGISTERED LAND SURVEYOR  
 TUCSON, ARIZONA  
 JOB# 91-56

Z-2017-451