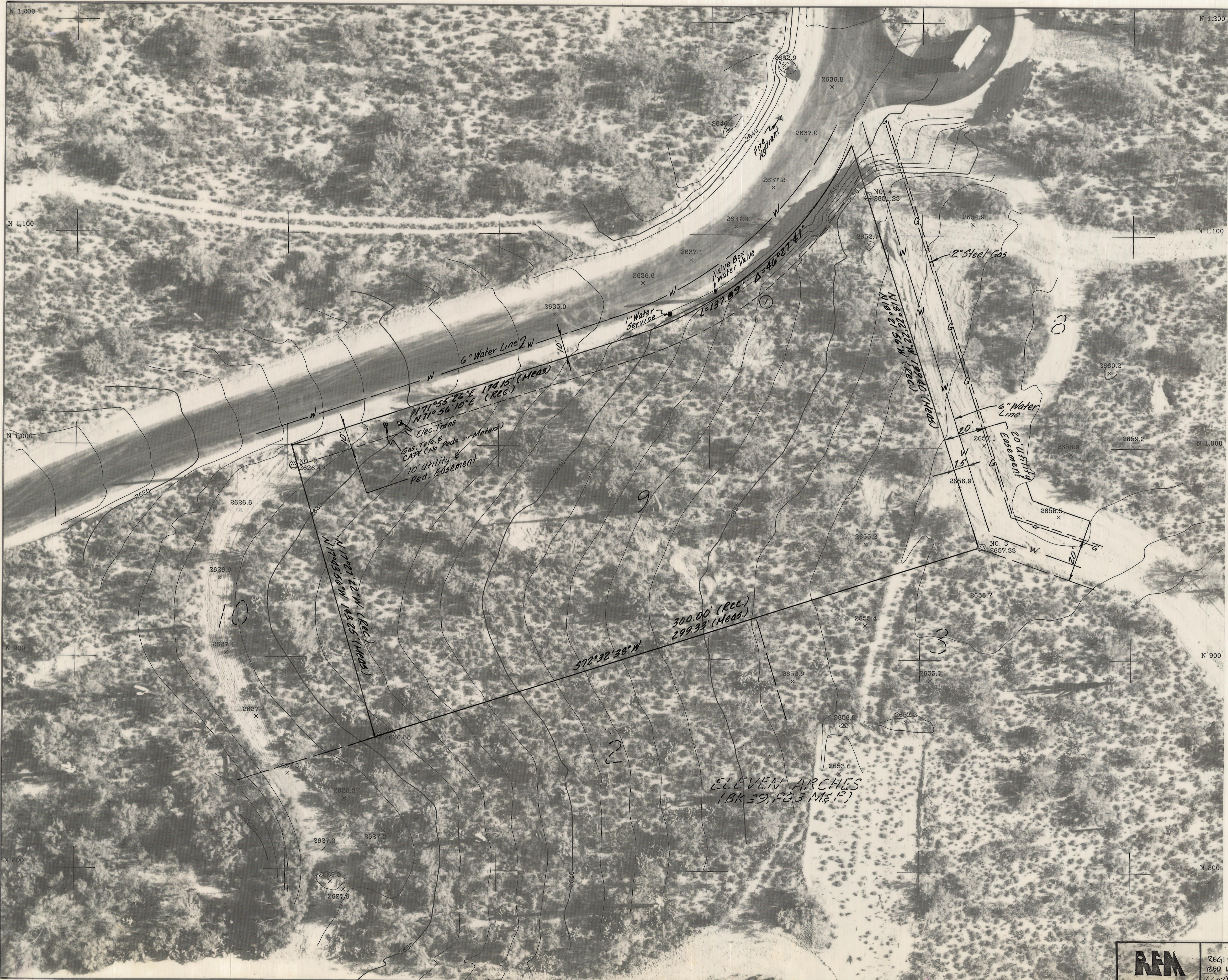


DISCLAIMER:

This unrecorded Record of Survey was donated to the City of Tucson. The City of Tucson provides this data for your personal use "as is." Additionally, the City of Tucson provides this information with the understanding that it is not guaranteed to be accurate, correct or complete and conclusions drawn from such information are the responsibility of the user.



Curve Data

No.	Radius	Delta	Tangent	Length Chord
①	170.04'	46°27'41"	78.99'	137.89'

- Notes**
- (1) Contour Interval = 2'
 - (2) M - Measured
 - (3) R - Map or Deed Record
 - (4) Topography by Cooper Aerial Survey Co. Job #910503
 - (5) There are underground utilities in the area. Before digging or if design is critical, call Blue Stake at 792-2211.

TOPOGRAPHICAL SURVEY

OF LOT 9 COLONIA DEL SOL AS RECORDED IN BOOK 43 OF MAPS AND PLATS AT PAGE 73 IN THE OFFICE OF THE PIMA COUNTY RECORDER, PIMA COUNTY, ARIZONA.



RFM	Z-2017-452	
	REVISIONS	DATE
	ROBERT F. MELLEN REGISTERED LAND SURVEYOR 1250 W. MOHAVE ST. TUCSON, ARIZONA (602) 888-1012	DATE: 5-16-91 DR BY: ENT CREY/RFM JOB NO. 91-57 SCALE: 1"=20' SHEET 1 OF 1