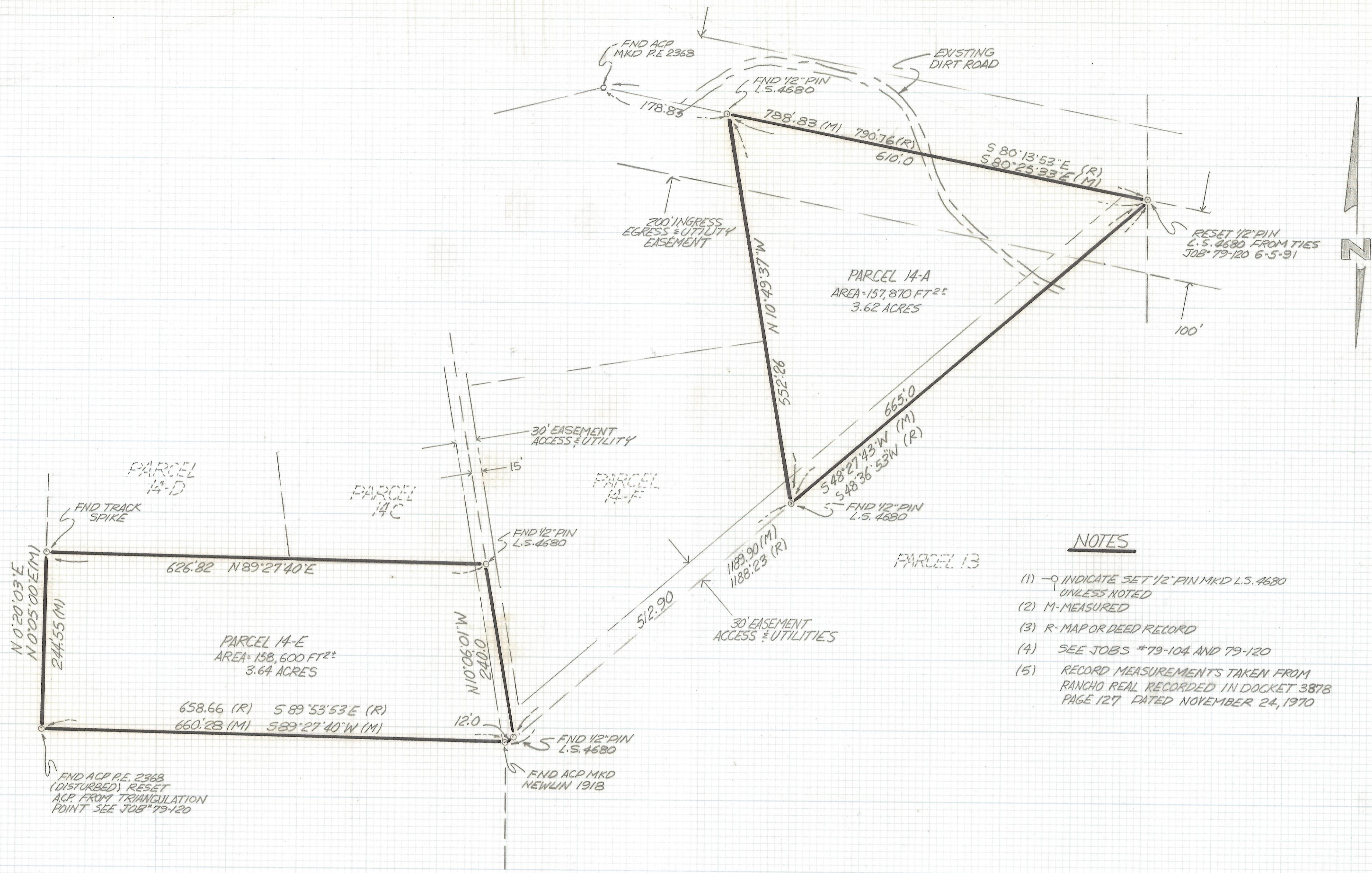


# **DISCLAIMER:**

**This unrecorded Record of Survey was donated to the City of Tucson. The City of Tucson provides this data for your personal use "as is." Additionally, the City of Tucson provides this information with the understanding that it is not guaranteed to be accurate, correct or complete and conclusions drawn from such information are the responsibility of the user.**





- NOTES**
- (1) → INDICATE SET 1/2" PIN MKD L.S. 4680 UNLESS NOTED
  - (2) M- MEASURED
  - (3) R- MAP OR DEED RECORD
  - (4) SEE JOBS #79-104 AND 79-120
  - (5) RECORD MEASUREMENTS TAKEN FROM RANCHO REAL RECORDED IN DOCKET 3878 PAGE 127 DATED NOVEMBER 24, 1970

RESULTS OF SURVEY

OF A PORTION OF PARCEL 14 OF RANCHO REAL A PORTION OF THE SOUTH HALF OF SECTION TWENTY-SEVEN TOWNSHIP THIRTEEN SOUTH RANGE 12 EAST GILA AND SALT RIVER BASE AND MERIDIAN PIMA COUNTY, ARIZONA

*[Handwritten Signature]*  
 6-8-91

Z-2017-466

| REVISIONS | DATE   |
|-----------|--------|
|           | 6-4-91 |

**RFM** ROBERT F. MELLEN  
 REGISTERED LAND SURVEYOR  
 1250 W. MOHAVE ST. TUCSON, ARIZONA  
 (602) 888-1012 SCALE: 1"=100'

DR BY: EMT CK BY: RFM  
 JOB NO. 91-71  
 SHEET 1 OF 1