

# **DISCLAIMER:**

**This unrecorded Record of Survey was donated to the City of Tucson. The City of Tucson provides this data for your personal use "as is." Additionally, the City of Tucson provides this information with the understanding that it is not guaranteed to be accurate, correct or complete and conclusions drawn from such information are the responsibility of the user.**



AVENUE

EVCLID

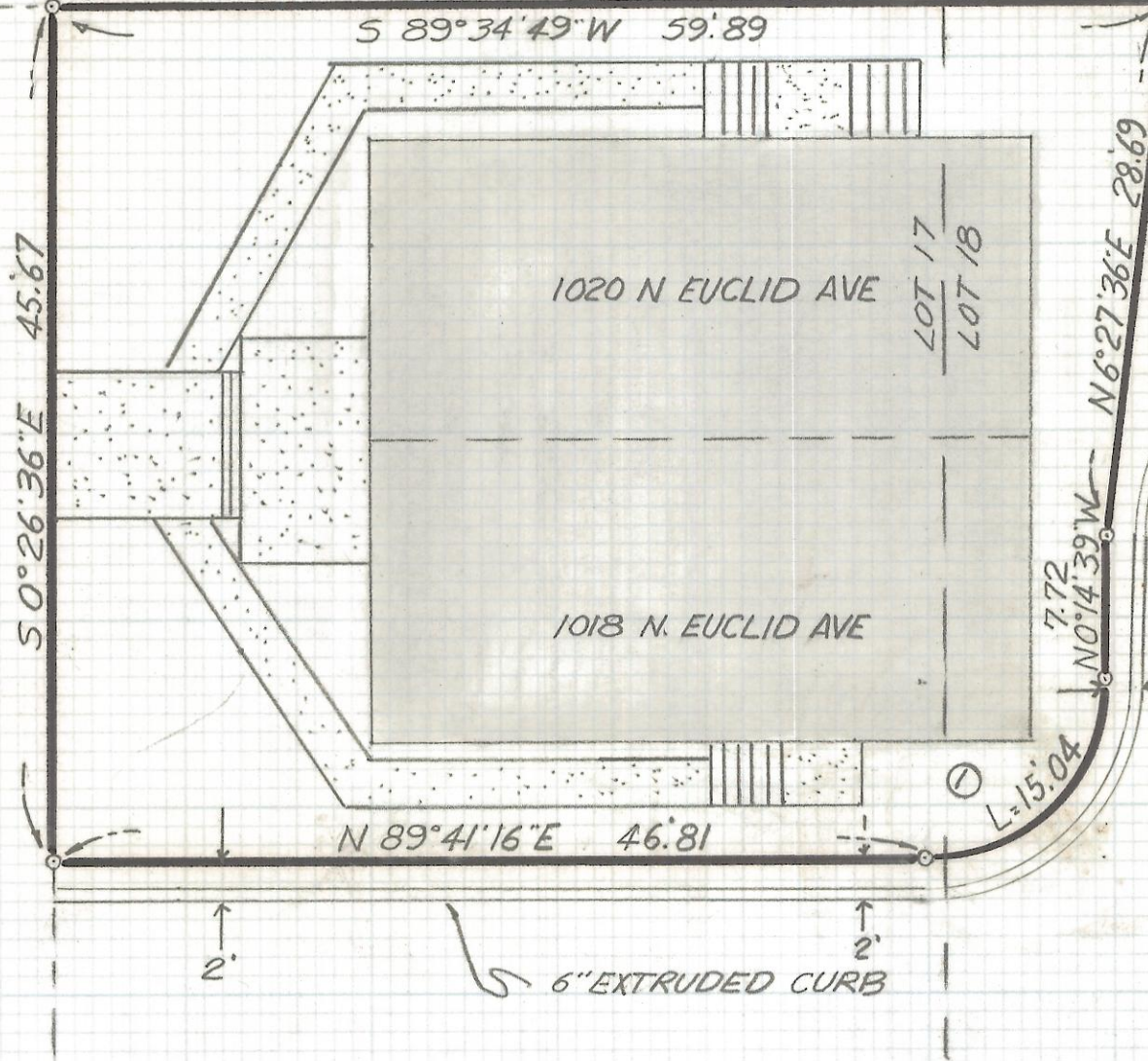
40'

FND "X" IN CONC. APRON SEE 89-79

NORTHWEST CORNER LOT 17

SET TAG MKD L.S. 4680 IN CONC

EXISTING WOOD FENCE



CURVE DATA					
NO	RADIUS	DELTA	TANGENT	LENGTH	CHORD
①	9.58	89°56'40"	9.57	15.04	13.54

ASPHALT PARKING AREA

NOTES

- (1) ⊙ INDICATES SET 1/2" PIN MKD L.S. 4680 UNLESS NOTED
- (2) SEE JOB# 89-79
- (3) AREA OF PROPERTY IS 2610 FT<sup>2</sup>

RESULTS OF SURVEY

OF A PORTION OF LOTS 17 AND 18 BLOCK 29 FELDMAN'S ADDITION AS SHOWN IN BOOK 20 OF MAPS AND PLATS AT PAGE 35 IN THE OFFICE OF THE PIMA COUNTY RECORDER, PIMA COUNTY ARIZONA



Z-2017-469

REVISIONS	DATE

<b>RFM</b>	ROBERT F. MELLEN	DATE: 6-13-91
	REGISTERED LAND SURVEYOR	DR BY: EMT CK BY: RFM
	1250 W. MOHAVE ST. TUCSON, ARIZONA	JOB NO. 91-74
	(602) 888-1012 SCALE: 1" = 10'	SHEET 1 OF 1